



# CALLBOARD

Redwood Empire Division PCR/NMRA

Website: [www.pcrnmra.org/redwood/](http://www.pcrnmra.org/redwood/)

Fall 2018

## Points of Interest

### • Fall Meeting

Monroe Hall  
Santa Rosa  
November 17, 2018

Fall Meeting and RED Picnic Report 2

Director's Report 3  
Superintendent's Report  
Chief Clerks Report  
Membership Report  
RED Staff List

Miscellaneous 4  
Modules for Sale  
Napa Club Update  
NMRA Convention

Local Club Spotlight 5  
Mendocino Coast and Model Railroad Historical Society

Local Layout Spotlight 6  
Petaluma Valley Railroad

Trip Report 7  
Travels with Verne

Diamond Rails Forever 8  
2019 PCR/FRRS Joint Convention

Clubs in the RED 9

Comin' Down The Line 10  
- Calendar of Events

## CALLBOARD

### Fall 2018 RED Meeting

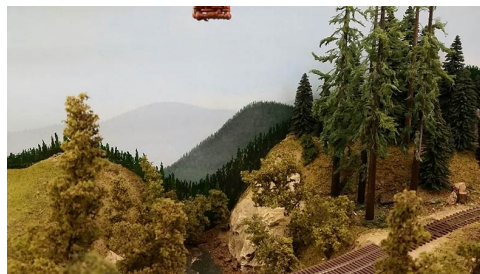
Saturday, November 17, 2018

Monroe Hall, Santa Rosa, CA

The Fall Redwood Empire Division meeting will be held Saturday, November 17, 2018 at Monroe Hall, 1400 West College Avenue, Santa Rosa. Parking is behind the building. The doors will open at 10:00 am with the meeting starting at 11:00 am. Steve Skold will be acting superintendent for this meeting.

#### Program Presentation

This month's program will be a presentation on painting backdrops by Dave Sheber. Dave will be at the meeting with paints, brushes and a few pieces of Masonite in hand, to demonstrate his approach to painting backdrops for model railroads. He is a member and president of the North Coast Model Railroad Society. Dave models Colorado Narrow Gauge for the North Coast Narrow Gauge modular group and for his dual gauge home layout of Central California to the Sierra. He has been painting backdrops for the NCHMRS layout located in the Healdsburg Freight Depot.



#### Show and Tell

Show and Tell gives members a chance to show off their model railroad projects, equipment, photographs, travel - any and all aspects of railroading. A **\$50 gift certificate** from Poggies Trains will be presented to a lucky Show and Tell participant during the Raffle and Door Prize part of the meeting.

#### Door Prize and Raffle

Speaking of the door prize and raffle, in addition to the usual selection of railroad items, a **\$100 gift certificate** to Poggies Trains will be presented to a lucky attendee as a door prize. The raffle will include a **\$75 gift certificate** to Poggies Trains.

#### Lunch

Mary Moore Campagna will provide her wonderful selection of goodies for sale for anyone interested in purchasing lunch.

*Continued on next page.*

### Layout Tour

Tom Swearingen has graciously offered to open his layout for a tour by RED members following the meeting. Tom's HO scale, DCC controlled, Cal Pacific layout models the cities of Oakland, Emeryville, Berkeley, Richmond, Pinole, Crockett, Martinez, and Sacramento. Passenger and freight trains move between San Francisco (a bit of modeling license here) and Sacramento, as well as six local turns.



## RED Annual Picnic Report

The RED held its annual picnic, Saturday, September 8th, at the 2018 Roots of Motive Power Steam Festival in Willits, CA. It was a beautiful day and there was a lot of equipment on display including operating steam engines, steam donkeys, steam rollers and a steam shovel. RED members attending the festival included Steve Skold, Scott Lockhart, Kent Hinton, Dave Grundman, Gus and Mary Moore Campagna, Denni and Cliff Baumer, Ron and Pam Kaiser, Marvin Schenk and Dave Sheber. A few people stayed for the evening BBQ, door prize giveaway and entertainment. If you missed the festival, the collection is open to the public during work days. Work days are held on the first and third Sundays of each month from 9:00am to 4:00pm.



**RED Staff****PCR Director**

Steve Skold  
[sandcskold@att.net](mailto:sandcskold@att.net)

**RED Superintendent**

Scott Lockhart  
[scottnl1947@gmail.com](mailto:scottnl1947@gmail.com)

**RED Chief Clerk**

Dud Peters  
[dudpeters@yahoo.com](mailto:dudpeters@yahoo.com)

**Contests/AP Program**

Giuseppe Aymar MMR  
[giuseaymar@aol.com](mailto:giuseaymar@aol.com)

**Program**

Dave Grundman  
[dave\\_pat\\_1999@yahoo.com](mailto:dave_pat_1999@yahoo.com)

**Website/Membership**

Gus Campagna  
[campgus@earthlink.net](mailto:campgus@earthlink.net)

**Layout Tours**

Ernie Simard  
[esimard@yahoo.com](mailto:esimard@yahoo.com)

**CALLBOARD Editor**

Scott Lockhart  
[scottnl1947@gmail.com](mailto:scottnl1947@gmail.com)

**Director's Report - Steve Skold**

The PCR Mid-year Board Meeting was held on Oct 20th at the Big Four Conference Room at the California State Railroad Museum in Sacramento. With the 2019 PCR Convention planning well under way, Tom Crawford, the PCR Convention Chairman briefed us on the plans for the 2020 PCR Convention in Coast Division to be held in Concord, CA at the Crown Plaza Hotel.

PCR President, Ed Merrin, reported there are two PCR committee chairmen vacancies. Mark Poggendorf who was the PCR Contest Chairman is moving to Nebraska at the end of the year. Giuseppe Aymar has stepped back in as chairman pending a replacement. Doug Wagner is resigning as PCR Membership Chairman in order to get more involved in Daylight Division activities. If you would like either of these jobs, contact Ed Merrin.

The nominations chairman, Dave Connery, reported the following nominees. For PCR President-Chris Palermo, and for Vice-President-Frank Markovich. The election will be held online. Qualifications for each

will be in the next Branch Line. As a reminder, RED's next election will be next May with election of Superintendent and Chief Clerk. Nominations will be at the February meeting. We also will be using online voting.

The new PCR logo was accepted by the board as there was no trademark problems with Union Pacific. It was shown on the most recent Branch Line. The art work was done by my daughter Kristen Skold.

Other discussions included the making of the Branch Line available online and deleting the printed version. That decision will be finalized at the next Board Meeting. There was also talk of PCR reviewing the finances of each Division, but details need to be worked out and voted on.

In the absence of Superintendent Scott Lockhart, I will be running the next RED meeting on November 17th at Monroe Hall. I doors will be open at 10 AM and the meeting will start at 11.

**Superintendent's Report - Scott Lockhart**

I love going to train shows. I am most impressed with the number of young families that attend the shows. As I reported in an earlier Callboard, I attended the Great Train Expo in Sacramento last winter. In addition to the wonderful club modular layouts, the smaller layouts (O gauge, Lego etc.) received a lot of attention, especially from the families with small children. In the ongoing conversations about the fu-

ture of model railroading, this gives me hope that some of that joy and wonderment will eventually translate into pursuing model railroading as a hobby. How that will evolve is anybody's guess. I am happy to report that I have attended a few operating sessions that included attendees well below the typical average of the usual suspects.

**Chief Clerk's Report - Dudley Peters**

The RED currently has \$6149.70 in its checking account. The RED received its quarterly check, in the amount of \$61.00, from the PCR..

**Membership Report - Gus Campagna**

As of October RED membership stands at 127. This is down four from the September report.



## Miscellaneous

### Modules for Sale

#### *Help a widow; buy a module.*

When former R.E.D. member Pat Boyle passed away he was in the process of building a layout at his newly finished train room on his property. His wife, Teresa, has sold some of his modules to me and I brought the rest of the modules home with me as well.

The modules are well built, ultra-light weight construction made from 1/8 plywood and 2" foam sheets. There are four corner modules, several 6 foot modules and several 4 foot modules. The modules do not have legs but they do have 3/4 inch end plates.

Teresa would really like to realize some value from these modules so I'm selling them for \$15 for a 4 foot module with foam top and \$20 for a 6 foot module with foam. Please call me at (707) 484-5428 if you're interested. I may not be able to take your call but you can leave a detailed message.

In a couple of months, Teresa will be bringing Pat's equipment, rolling stock and locos up to Sonoma County and I, as well as others will be helping her liquidate the collection.

Please consider purchasing one of these modules;.

Thanks,  
Carol Alexander  
(707) 484-5428  
carolnma@msn.com

### Napa Club Update

As many of you know the Napa Valley Model Railroad Historical Society has been in litigation concerning their location at the Napa Valley Expo Fairgrounds. The good news is that they are still up and running. RED member, Dave Turner wrote that "the Club will not only host public open houses Oct. 20, Nov. 17 and 18, and Dec. 8 and 9; but also is putting the finishing touches on the construction of a display layout for a special "Walt Disney" exhibit at the Napa Valley Museum in Yountville that opens November 11."

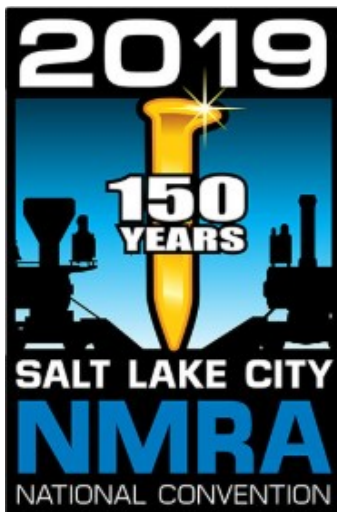
More information can be found at the following on line locations.

<https://www.facebook.com/NapaValleyModelRailroad/>

<http://www.nvmrc.org/Home>



Walt Disney Trains



### 2019 NMRA Convention Salt Lake City, Utah July 7 - 14, 2019

The 2019 NMRA Convention is accepting reservations for what looks like and outstanding event. As of November 1, 2018 there are up to fourteen, and counting, layout tours scheduled, a driving of the Golden Spike Reenactment celebrating 150 years since the actual event, clinics, operating sessions, the National Train Show contests, non-rail tours, and touring the beautiful Salt Lake City area. For the best up to date information, and registration, please visit the convention website.

<http://www.nmra2019slc.org/>

## SPOTLIGHT ON A LOCAL CLUB

### Mendocino Coast Model Railroad & Historical Society

It is sad but true that there is no testament to the loggers and the railways that ran into the woods to feed the mills that existed at every river between Gualala and Westport in Mendocino County. The Mendocino Coast Model Railroad and Historical Society, has rectified the situation by creating a "living history" of the Redwood Empire in the form of a large (G) scale model railway layout. The club is located in Fort Bragg behind the Skunk Train Depot.

The layout is of a logging railroad that might have existed somewhere along the Mendocino Coast between 1925 and 1940 when steam was still king. It's a testament to the men who cut the giant trees; the railroads which brought the giant logs to the mill and the schooners that took the products to market from the dangerous doghole ports along the Mendocino Coast. After two and a half years of construction in the Carpenter's Barn in the yard of the CWR's Skunk Train our layout is open to the public. The scenery still has a ways to go but we have "more than enough to put on a show". The layout is a work in progress.

The main line tracks are 35 inches above floor level and the Mill and Town to Country Line are 42 inches and higher. Our model is set in the 1920 to 1940 period when steam was still king and diesel power was just entering the scene. The two main lines each of 1.7 scale miles and the logging line are all operational. Our locomotives use solar power electricity, battery power and radio control and for special days we have a collection of live steam locomotives. The curves of the main lines are large enough to handle even the largest locomotives. Become an Associate Member and you can bring your own loco and consist and run it on the layout.

#### Admission:

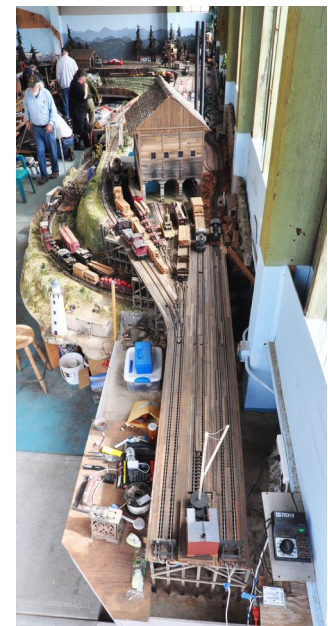
Free with a Skunk Train ticket.

If not riding the Skunk Train: Adults - \$5.00;

Children - \$3.00

#### Hours:

10:30 - 2:30 pm: Every Day except Tuesdays and Thursdays. Check the website and Facebook for the most current information.



For more information: <https://www.mendorailhistory.org/mendorail/index.htm>



# SPOTLIGHT ON A LOCAL LAYOUT

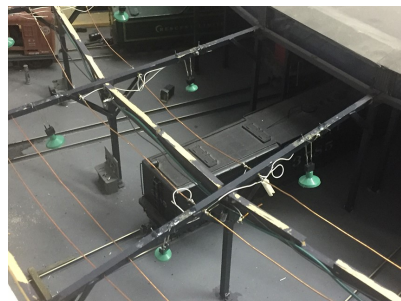
## Petaluma Valley Railroad

Excerpts for this article are from the winter 2009 issue of Petaluma Magazine and Maureen Macdonald.

Angus Macdonald never lived to see his dream come true, but his widow, Maureen, is seeing to it that his dream continues. Maureen describes Angus "as an active, athletic man who raced cars at Sears Point and rode motorcycles. But he had a terrible motorcycle accident in 1980 that left him permanently disabled." Until his death in 2007, Macdonald was a paraplegic. His HO gauge layout, housed in an 800 square foot barn west of Petaluma, was designed to allow him to work on the layout. Most layouts are four to five feet off the ground. Angus designed his layout to be waist-high with room to maneuver his wheel chair under the layout for convenient access.

Angus was a master in all things mechanical and electrical. But, he needed someone to work on scenery, equipment and other aspects of the layout. A group of volunteers helped Angus and continues to work on beautifying, building and expanding the layout. Each person specializes in areas such as trackwork, buildings and scenery/landscape.

Macdonald and his posthumous team celebrate a wacky sense of humor which is reflected in the names of some of the Petaluma Valley Railroad industries - Gerties Gravel Pit, Improbably Mine Company, and the Bella Petaluma Winery. Anyone familiar with the Clover Sonoma (Stornetta) billboards will recognize "Wholly Cow" and "Moovin' at Sears Point." The red A&P boxcar located on the wall above the layout is numbered 641934, the date Angus was born - June 4, 1934. It contains his ashes. A brass plaque reads, "Angus Macdonald, Chief Engineer, Petaluma Valley Railroad, 1934 - 2007." "I'm so glad to put him where he would be happiest," Macdonald says. The VW bus contains the ashes of their dog Abel.



## Travels with Verne

### Verne Alexander's trip to the Northwest

From time to time, a RED member travels to a model and/or full scale railroad event. This is an edited version of Verne's email about his trip to the Northern Pacific convention.

The Northern Pacific convention in Tumwater, WA was really good. Good presentations, tours of some extremely nice layouts in the area, including the best N scale layout I've ever seen. Ops oriented. Toured the Pacific Northwest Archive in Burien, started by NPRHA, but covering all Northwest RRs. They have 20 work stations! And a kick-ass, operations oriented HO layout by Boeing employees. There is also a kick-ass ops-oriented HO layout in the Washington State Hist Museum in Tacoma, and they have scratch built most of the important businesses in the area and put them on it in proper locations. Had a steam train ride on the old Milwaukee line west out of Chehalis behind a 2-8-0. Got good weather for it—the rest of the time it rained. At ride's close I accidentally got invited up into the cab, where I rode during the switching of the passenger equipment back into the barn and the refueling of the engine. And I missed the modeling clinics and model sharing because someone brought five binders of photocopies of the collection of Northern Pacific photos in Portland's Union Station. They are going to start selling prints, and I probably wrote references to well over a hundred of them, without even having time to do a thorough job on two of the binders!

I left Lewiston Friday afternoon, following the Snake River for a time, and then overland. Saw only one UP stack train. Stopped in Dayton to visit the museum in the old UP depot. Very unique architecture, and much improved display of their stuff since was last there. The curator was thrilled to have her second genuine railfan of the day, and gave me the royal treatment. I learned a lot from her, including the fact that the depot was originally located across town and was moved to its present location rolling on logs that men picked up from the rear as it moved and placed in the front to be rolled on again. Power was by a capstan that required frequent repositioning. No one knows how they crossed the river! It took them a large number of days to complete the move.

Really enjoyed it all!  
Verne





## **DIAMOND RAILS FOREVER**

### **PCR/FRRS Joint Convention**

**May 2 - 5, 2019**  
**Sacramento, CA**

By now you should have seen at least one of the detailed notices from Chris Palermo, PCR Secretary and Social Media Coordinator, that Diamond Rails Forever, our 2019 PCR Convention, is finally open for registration. If you haven't, consider yourself notified!

Diamond Rails Forever is named to commemorate the fact that this will be PCR's 75th Annual Convention. I don't know about you, but I wasn't even born at the time of the first. That puts a relatively high bar on our expectations, but I am confident that the Host Committee, staffed by leaders of PCR's Sierra Division, are up to the task.

The specific details are available on the convention website (<http://pcrnmra.org/conv2019/>). It is a joint venture with the Feather River Rail Society and is scheduled for May 2-5 in Sacramento. This event is going to differ a little from what we are used to but in ways that we are likely to see more frequently in the future. Some of this is largely an adaptation to changes in the hospitality industry marketplace. Costs are going up and PCR convention planners are working out ways to provide the experiences that we have grown to love over the years without passing on additional costs to the members.

There are two main changes. First, in recent years we have been able to combine the meeting facilities and hotel rooms in one fairly upscale facility. That's getting harder to do so we are splitting ourselves between two closely spaced locations. We have the McClellan Conference Center for clinics, meetings, contests, the banquet, and so on. The nearby Lions Gate Hotel will be there for after hours socializing and snoozing. The second change is that this is a four-day meeting instead of a five-day one. Rather than starting on Wednesday afternoon it starts on Thursday morning (although hotel rooms will be available for Wednesday night). Scheduling of activities will be adjusted accordingly.

Apart from these structural changes everything will be familiar. There will be clinics, a contest room, prototype and model tours, operating sessions, hobo breakfast, Awards Banquet, Board of Directors meeting, Sunday breakfast meeting, and so forth. There are shirts and convention cars to order as well.

So get yourself to the website and register ASAP!

**[Register for the Convention HERE!](http://pcrnmra.org/conv2019/)**



# Clubs in the RED

## Coastal Valley Lines Modular Railroad

The Coastal Valley Lines Model Railroad Club of Sonoma County, LTD (CVL) is an informal association of novice-to-expert model railroaders from around the Sonoma County, California area. We operate our HO modular railroad at public and private events, and also gather for clinics, work sessions and regular monthly meetings.

<http://cvlrr.com/>

## Eel River Valley Model Railroad

It is the purpose of the Eel River Valley Model Railroad to preserve the rich history of the Northwestern Pacific Railroad along with the history of the North Coast of California. This is done through a series of modules depicting several areas of the Northwestern Pacific Railroad between Schellville and Eureka California. It is our goal to preserve the rich heritage of the railroad and the North Coast through these representations of the past. Please go to the club's website for information on visiting the layout.

<http://eelrivervalleyrr.com/index.htm>

## Mendocino Coast Model Railroad and Navigation Company

See logging history brought to life at this walk-around large G-Scale layout representing a history of logging and the railroads located in the Redwood Empire. Over 1300ft of track - equivalent to 6 miles with views of a mill, logging camp, town, pier, bridges and trestles.

*Hours: 10:30 - 2:30 pm: Every Day except Tuesdays and Thursdays.*

<https://www.mendorailhistory.org/mendorail/index.htm>

## Napa Valley Model Railroad Historical Society

The Napa Valley Model Railroad Historical Society is a 501(c)(3) educational non-profit organization which operates a 4600 square foot model scale railroad exhibit that represents the agricultural and industrial heritage of the Napa Valley. Check their Facebook page for open house dates and times.

<https://www.facebook.com/NapaValleyModelRailroad/>

## North Coast Historical Model Railroad Society (NCHMRS)

The club operates an HO scale layout based on the Northwestern Pacific Railroad as it ran in the 1950's through Sonoma County to Ukiah. The club is building the layout as a display for the Depot Museum and will be located in the historic Healdsburg Freight Depot. Stop by on the 3rd Saturday of each month as we open the doors to the depot.

<http://www.nchmrs.net/>

## Redwood Empire Live Steamers Interactive Museum

The Redwood Empire Live Steamers is a non-profit organization dedicated to preserving Sonoma Counties Railroad history through the re-creation, in miniature, of railroad equipment and historic landmarks.

<https://www.facebook.com/RedwoodEmpireLiveSteamers/>

## The Redwood Empire Model Railway Society

The REGRS is a loosely knit club of garden railroad enthusiasts from areas north of the famous San Francisco Golden Gate Bridge who share an interest in model trains. Our members are primarily located in Sonoma County and Marin County. Contact the club for public tours and shows.

[http://regrs.org/w/index.php?title=Main\\_Page](http://regrs.org/w/index.php?title=Main_Page)

## Sonoma Short Line Modular Group

The Sonoma Short Line modular group that is loosely based on the Southern Pacific branch line from Sonoma through Glen Ellen and Melitta Station to the old Santa Rosa Depot on North Street. They are currently looking for new members. Contact Steve Lewis for more information. Phone: 707-527-0396 Email: [sdlewis@cds1.net](mailto:sdlewis@cds1.net)

# Comin' Down the Line

## 2018 - 2019

**November 10 & 11, 2018** - Saturday 10:00 am to 5:00 pm, Sunday 10:00 am to 3:00 pm, FREE Model Train Show, [Tehachapi Loop Railroad Club](#), Aspen Builders Inc. Activity Center at the Tehachapi Recreation and Park District, 410 West "D" Street (off Mill Street), Tehachapi, CA. [MAP](#)

**November 10 & 11, 2018** - Saturday 10:00 am to 5:00 pm, Sunday 10:00 am to 4:00 pm, [41st Annual International Railfair](#) Model Railroad Show, Placer County Fairgrounds, 800 All American City Blvd, Roseville, CA. [MAP](#)

**November 17, 2018** - 11:00 am to 4:00 pm, [Redwood Empire Division](#) Fall Meeting, Monroe Hall, 1400 West College Ave, Santa Rosa, CA. [MAP](#)

**November 17, 2018** - 10:00 am to 2:00 pm, Open House, [Golden Empire Historical and Modeling Society](#), 1534 19th and Eye Streets, Bakersfield, CA. ([MAP](#))

**November 24 - 25, 2018** - 10:00 am to 4:00 pm, Open House, [Golden Empire Historical and Modeling Society](#), 1534 19th and Eye Streets, Bakersfield, CA. ([MAP](#))

**December 1 & 2, 2018** - Saturday: 10:00 am to 5:00 PM; Sunday: 10:00 am to 4:00 pm, [41st Annual Train Show](#), Stanislaus County Fairgrounds, 900 N Broadway, Turlock, CA. ([MAP](#))

**December 2, 2018** - 9:00 am to 5:00 pm, [The Quarterly NMRA Coast Division Meet](#) - a FREE Model Railroading Event,, 1001 Davis Street, San Leandro, CA. (at SF Bay Area Council Office of Boy Scouts of America)

**December 2, 2018** - 9:00 am to 5:00 pm, **FREE Local Model Railroading Maker Event!**, 1001 Davis Street, San Leandro, CA. (at SF Bay Area Council Office of Boy Scouts of America)

**December 8 & 9, 2018** - 10:00 am to 4:00 pm, **Great Train Show**, <http://trainshow.com/craneway/> Craneway Pavilion, 1414 Harbour Way South, Richmond, CA 94804. Free Parking

**January 25 – 27, 2019 – Bay Area Layout Design & Operations Weekend**, Sponsored by [Pacific Coast Region-NMRA](#), [Layout Design](#) and [Operations](#) Special Interest Groups. Location: TBD

**February 16, 2019** - 11:00 am to 4:00 pm, [Redwood Empire Division](#) Winter Meeting, Monroe Hall, 1400 West College Ave, Santa Rosa, CA. [MAP](#)

**March 9 & 10, 2019** - Sat: 10:00 am to 5:00 pm; Sun: 10:00 am to 4:00 pm, [Golden Empire Historical & Modeling Society's](#) Annual Model Train Show, Horace Massey Building, Kern County Fairgrounds, 1142 South P Street, Bakersfield, CA. [MAP](#)

**May 2 – 5, 2019** [Diamond Rails Forever 2019](#), PCR/FRRS Joint Convention, Lions Gate Hotel, McClellan Convention Center—McClellan Park, 3410 Westover Street, Sacramento, CA. ([MAP](#))

**May 18, 2019** - 11:00 am to 4:00 pm, [Redwood Empire Division](#) Spring Meeting, Monroe Hall, 1400 West College Ave, Santa Rosa, CA. [MAP](#)

**July 7 – 14, 2019** - [2019 NMRA National Convention & National Train Show®](#), The Little America Hotel - Salt Lake City, 500 South Main Street, Salt Lake City, Utah..

**September 4 – 7, 2019** - **39<sup>th</sup> National Narrow Gauge Convention**, Sacramento, CA. See the website for organizer email addresses.

**November 16, 2019** - 11:00 am to 4:00 pm, [Redwood Empire Division](#) Fall Meeting, Monroe Hall, 1400 West College Ave, Santa Rosa, CA. [MAP](#)