



CALLBOARD

Fall 2021

RED Website: <https://www.nmra-red.org/>

Points of Interest

Welcome to the Fall
2021 RED Callboard
Page 1

[Director's Report](#)
Page 2

[Superintendent's Report](#)
Pages 3

[Chief Clerk's Report](#)
Page 4

[Membership Report](#)
Page 4

[Director's Candidate
Report](#)
Page 4

[2022 PCR Convention
Update](#)
Pages 5 - 9

[7th Annual Redwood
Empire Train Show](#)
Page 10

[Show & Tell](#)
Pages 11 - 21

[Science and Imagination
Railroad](#)
Page 22

[Online Resources](#)
Pages 23 - 26

[RED Facebook Page](#)
Page 27

[RED Webpage](#)
Page 28

[Clubs in the RED](#)
Pages 29 - 30

[Advertisements](#)
Page 31

FALL 2021 CALLBOARD

Welcome!



Fall 2021 RED Zoom Meeting

We hope everyone is well and enjoyed a wonderful Thanksgiving holiday. On Saturday, November 20th thirty two RED members gathered in front of their screens to take part in the Fall meeting. This is an attendance record for our RED Zoom meetings and included PCR members from other divisions. After Paul's welcome to everyone Denni and Cliff Baumer provided an update on the 2022 PCR Convention, Return to the Redwoods. Giuseppe Aymar, Dave Grundman and Gus Campagna gave staff reports which will be covered in detail in the newsletter. There were nine great Show & Tell presentations covering a wide variety of model railroading subjects.

You will notice a new addition at the end of this newsletter. A page has been added for model railroad businesses in the Redwood Empire Division to place advertisements. We encourage members to our local businesses.

We hope that we will be able to meet in person at Monroe Hall for the Winter 2022 meeting in February.

A video of the meeting is available below. Thanks to Al Merkrebs for hosting the Zoom meeting and recording the meeting on video.

Happy Holidays to All!

View the meeting video: [RED Fall Zoom Meeting](#)

RED Staff**PCR Director**

Giuseppe Aymar
giuseaymar@aol.com

RED Superintendent

Paul Weiss
paulbweiss@mac.com

RED Chief Clerk

Dave Grundman
dave_pat_1999@yahoo.com

Contests/AP Program

Giuseppe Aymar MMR
giuseaymar@aol.com

Programs/Zoom

Al Merkrebs
alm@sonic.net

Membership

Gus Campagna
campgus@earthlink.net

Website

Paul Weiss
paulbweiss@mac.com

CALLBOARD Editor

Scott Lockhart
scottnl1947@gmail.com

Director's & Achievement Program Reports

Giuseppe Aymar, DDS, MMR

RED Achievement Program Chair Report

Rich Mossholder has been awarded the "Certificate for Author" He now has two certificates under his belt.

The last few months have seen an upsurge of interest in the MMR program, with a few of our members receiving AP Certificates.

I encourage more of you to join us in this wonderful program that will enhance your model railroading experience by mentoring other modelers.

RED Director's Report

No resolution yet from the BOD on the question of Insurance coverage under the NMRA umbrella for all Divisional officers. The overriding concern is in regards to liability insurance. It is generally believed that the Directors are covered by the NMRA officer's liability while the Division Superintendents are not. The discussion centers on whether to mandate the melting of the Superintendent and Director positions into one single entity to circumvent the Insurance requirement; the silver lining seems to be having the ability to fill both positions at once when a Division experiences a lack of enthusiastic volunteers. Alternatively, to allow each Division to make the final decision for their particular Division based on whether enough applicants for both positions are available. Researching this conundrum, I am referencing a letter sent to all Region Presidents dated July 29, 2009, by Robert Amsler Jr, Esq, General Counsel to the NMRA.

In it, he outlines who is covered and what the rules for such coverage are. I will make it available to anyone who asks to see it.

In my interpretation of the letter, it is clear all NMRA Divisional Directors and Officers are included. The caveat is they need to be NMRA members.

Our former PCR President, Chris Palermo's (Atty) interpretation is that Superintendents are not covered.

Following NMRA directives, President Markovich sent all PCR Directors a form to be filled out listing the names of each Divisional officers.

I asked President Markovich to reach out to Mr. Amsler asking for clarification to make sure that all Divisional officers are included. No answer has yet to be received that I am aware of.

Thus, if such is the case, each Division would be deciding on amalgamating the two positions only on a need to do so basis due to lack of applicants for such positions and not driven by a need to satisfy Insurance concerns.

Any comments from membership are welcome.

You can e-mail me at Giuseaymar@aol.com.

Continued on next page

RED Staff**PCR Director**

Giuseppe Aymar
giuseaymar@aol.com

RED Superintendent

Paul Weiss
paulbweiss@mac.com

RED Chief Clerk

Dave Grundman
dave_pat_1999@yahoo.com

Contests/AP Program

Giuseppe Aymar MMR
giuseaymar@aol.com

Programs/Zoom

Al Merkrebs
alm@sonic.net

Membership

Gus Campagna
campgus@earthlink.net

RED Website

Paul Weiss
paulbweiss@mac.com

CALLBOARD Editor

Scott Lockhart
scottnl1947@gmail.com

Superintendent's Report - Paul Weiss

Hello all,

At this writing the world continues to navigate ongoing COVID developments... another variant looms and as such long term planning is a bit tricky. Your Division Officers and Staff have had two primary initiatives during this year. The first is to produce for you terrific content for our zoom "Meets", the most recent of which was in November. The second, our beloved CALLBOARD newsletter, has sought to gather the best of this content and add more articles and news items for your enjoyment.

Let's take a second to speak of these Meets, which will continue to be scheduled quarterly with the hope that soon they can return to an in-person or hybrid format. If you haven't attended one in 2021, I hope you will resolve to change that in 2022. It's easy and enjoyable; in November we had 8 mini-clinics and virtual tours. None of this content is available from another source, these are our friends and neighbors in the RED (or special invited presenters from beyond) sharing their expertise and projects. I've made it a passion project to continue to up our game and attempt to have the best local content anywhere in the NMRA.

As such, not only do I hope you will sign on, I hope you will up your own game and share with us! Many that I have recruited to speak and share were a little surprised, perhaps they hadn't presented before or feared their own content would be not interesting to others. Wrong! I am sure I speak on behalf of all past attendees when I say that we LOVE hearing and seeing what you are up to. I sincerely hope you will join us and hopefully present... we have the tools and experience to support you and make sure it's fun and enjoyable for you too.

Many of the November presentations have been ably assembled by our Editor Scott Lockhart and are presented elsewhere in this issue of the CALLBOARD. Even better though, we hope you will follow the link and watch the entire archived Meet at home. I can promise you will find several presentations of interest and perhaps inspire you in various ways.

I often speak to people who have been a little adrift during the pandemic. How grateful I am to have this pastime which has kept me (and my collaborators) busy and engaged throughout. I hope your experience has been mostly the same. It is a season of gratitude indeed... We'll see you next year.

Paul Weiss
RED Superintendent



Continued on next page

RED Staff**PCR Director**

Giuseppe Aymar
giuseaymar@aol.com

RED Superintendent

Paul Weiss
paulbweiss@mac.com

RED Chief Clerk

Dave Grundman
dave_pat_1999@yahoo.com

Contests/AP Program

Giuseppe Aymar MMR
giuseaymar@aol.com

Programs/Zoom

Al Merkrebs
alm@sonic.net

Membership

Gus Campagna
campgus@earthlink.net

RED Website

Paul Weiss
paulbweiss@mac.com

CALLBOARD Editor

Scott Lockhart
scottnl1947@gmail.com

Chief Clerk's Report - David Grundman

The RED bank balance as of 10/31/2021 is \$5,205.80. One check for \$130.30 was issued to the Convention Committee for graphic design work.

Membership Report - Gus Campagna

Based on the November 2021 NMRA report RED membership stands at 113.

Candidate statement for RED's Director position

Two years go by fast, very fast indeed at this stage in our lives. The last two years as RED Director for PCR have whizzed by seemingly without even blinking an eye. PCR is facing important decisions for the well-being of the Organization. There is the continued erosion of membership due to many factors with the main reasons being age and lack of recruitment, there is the loss of potential venues to conduct our meetings both at the Division as well as the Regional level. Meeting halls are becoming expensive and Convention meetings places are priced out of sight and scarce. On-going debate on the BOD agenda are possible consolidation of Regions to maintain viable membership numbers to even put on a Convention, Superintendent/Director duties amalgamation into one single position to offset the current lack of applicants and the liability Insurance issues facing Superintendents; finally, the use of Zoom interactive meetings to allow participation by outlining areas members and incapacitated members .

It would be my pleasure to represent RED as your Director for the next two years. I submit my name again for the nomination of Director to PCR's BOD.

Thank you for your confidence and trust.

Giuseppe Aymar, DDS, MMR

2022 PCR Convention Update



Return to the Redwoods

2022 PCR Convention

April 21 - 24, 2022

Rohnert Park, California

The first in-person convention in three years is shaping up to be one of the best ever. We have 20 confirmed clinics with more pending and it appears we will have over 20 layout tours. Several vendors have committed to our two-day Vendor Show, the excursions are filling up and we have 19 tables so far for the swap meet on Friday evening.

There are only a few days left to save \$10 on a Full Fare Registration to the PCR Annual Convention! Discount registration ends December 31, 2021. <https://pcrnmra.regfox.com/pcr-nmra-2022-convention>.

We realize COVID is still a concern and will follow whatever mandates are in place from state, county and the hotel. If needed, we will limit room capacities and even repeat clinics so that everyone feels comfortable attending.

There is lots of merchandise to commemorate this convention. We have the traditional polo shirt, a denim shirt, a cap and a mug! And of course, the beautiful Roma Wine Car as the convention car. All of these items are available on the registration site. If you have already registered and need assistance adding these items to your registration, please contact registrar2022@pcrnmra.org.

Denni and Cliff Baumer, Co-chairs



<http://www.pcrnmra.org/conv2022/index.html>

Continued on next page

2022 PCR Convention Update

Excursions

Sturgeon's Mill



<http://www.pcrnmra.org/conv2022/index.html>

Continued on next page

2022 PCR Convention Update

Excursions

Tour of Sonoma County Railroad Stations & Korbel Winery



Petaluma Station



Santa Rosa Station



Kenwood Depot



Korbel Station



Korbel Winery

<http://www.pcrnmra.org/conv2022/index.html>

Continued on next page

2022 PCR Convention Update

Call for Clinics

As many of you know, RED will be hosting next year's Pacific Coast Region Convention in April 2022 in Rohnert Park.

The lineup of clinics for PCR 2022, "Return to the Redwoods," is beginning to take shape. Please go to the Clinics web page at <http://www.pcrnmra.org/conv2022/clinics.html> to get an early peek.

AND... we are looking to add more clinics and clinicians to the schedule from our talented group of modelers, veterans and those willing to step forward for the very first time.

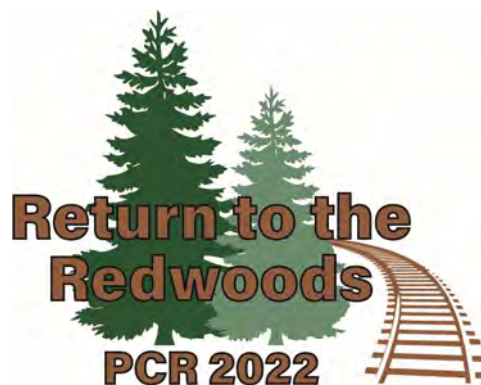
If you are an interested first-time clinician, please don't feel intimidated. We want to hear from you and welcome you. We have experienced clinicians to help you. Clinic audiences are friendly and appreciative, and the clinic environment is relaxed and interactive. We also have resources to help you overcome any technical questions or issues you may have in preparing your presentation.

Our goal is to offer 40+ clinics at PCR 2022 in 45-minute sessions with a 30-35 minute presentation and allowing 10-15 minutes for questions and discussion.

Clinicians..... we need and want your involvement and expertise to enrich our convention experience for attendees. Please, share your areas of greatest model railroading interest with us and offer a clinic.

To propose your clinic, ask questions and get involved, contact Denni and Cliff Baumer, Clinic's Chairs, PCR 2022 (clinics2022@pcrnmra.org).

Thank you, Denni & Cliff Baumer



<http://www.pcrnmra.org/conv2022/index.html>

Continued on next page

2022 PCR Convention Update

Operating Sessions

R.E.D. Layout Owners !!!

Thank you in advance for your interest in opening your layout during the 2022 PCR Convention. We are still looking for more of the wonderful layouts within a reasonable distance of the Convention Hotel to be open for operating sessions during the convention. Signing up and getting ready for a session is easier started sooner than later. These Ops sessions are often a convention highlight for attendees. So having quality choices will have a positive effect on overall attendance. So if you would, please get the process started. We have 5-7 layouts on the list but it would be nice to have more !!!

There will be a form posted soon in the Operations page of the PCR2022 web site. Please provide the information outlined below on that form so that we can include your layout in the operations section and give prospective operators information they need to plan their convention activities.

Currently ops session are planned for Thursday through Saturday, April 21-23, 2022. Other times may be requested but we're trying to make the convention schedule work as planned. Don't let that stop you though.

The big question on everyone's minds is COVID requirements. The convention will abide by applicable city, county and state guidelines and requirements. If you desire any safeguards above these guidelines and requirements, it's your home and you may require whatever additional safeguards you wish. A degree of flexibility may be required as conditions may change at any time. But the convention committee will not force anyone into an uncomfortable situation.

Layout Owner

Address

E-mail and Phone number (for the committee, not publication)

RR Name

Description (100 words or less) & Photos (format TBD)

Web site ??

Video (i.e., TSG link) ??

Scale

Number of Operators

Control System

Dispatch System of Choice

Any other information you'd like included in convention publicity.

Thank you for sharing your layout with the convention attendees!

Cheers, Doug Smith

Operations2022@pcrnmra.org

<http://www.pcrnmra.org/conv2022/index.html>

The 7th Annual Redwood Empire Train Show

Train shows? Do you remember train shows? On Friday, November 5th, Saturday, November 6th and Sunday, November 7th, the 7th Annual Redwood Empire Train Show (no connection to the RED) took place during the 27th Annual Sonoma County Holiday Home & Gift Show. Here are a few shots from the show.



[Diablo Pacific Shortline](#)



[Northwestern Pacific Railroad Historical Society](#)



[The Golden Gate American Flyer Club](#)



[Humboldt Bay & Eureka Model Railroad Club](#)



[Roots of Motive Power](#)



Show & Tell

Always a meeting favorite, there were nine Show & Tell presentations during the meeting. If you would like more information about any of the Show & Tell presentations please contact me at scottnl1947@gmail.com, and I will forward your request to the Presenter.

Clif Linton's Baltimore & Ohio Chicago Terminal Railroad Layout

Clif gave an overview of the B&OCTRR as seen in Chicago during 1960's and 1970's and the N scale layout that he is building represents Western Avenue Rail Corridor of this railroad. For more information about Clif's layout email him at linton122@gmail.com



• Western Ave. Tower



• 49th St. Tower



Ash St. Tower & 8-track bridge



75th St. Tower



Executing on the concept



- 20' x 20' L-shaped N scale garage layout
- Two operating levels, additional staging levels – all connected by helixes
- NCE DCC system
- FastTracks switches, signals

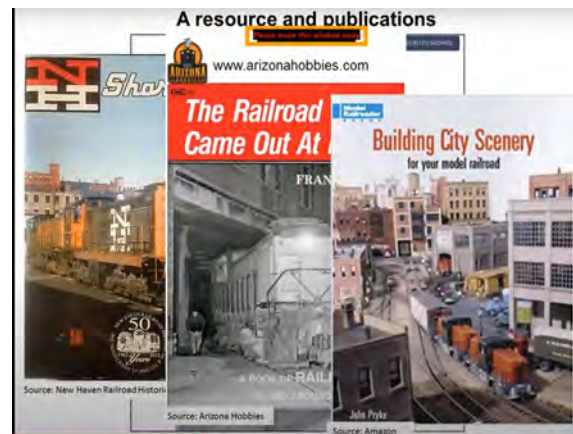
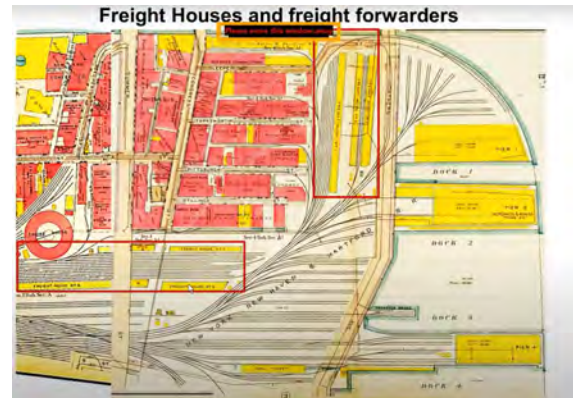


Continued on next page

Show & Tell

Michael Litant's Favorite Part of His Favorite Railroad—South Boston Freight Terminal

Michael gave an excellent presentation of the exceptional research he has done on the South Boston Freight Terminal. Below are examples of materials that Michael has collected. If you would like to know more about Michael's work email him at mil77777@gmail.com.



Continued on next page

Show & Tell

Ray Lorber's Baltimore & Ohio Railroad Layout

"Here is a photo of my model layout. It depicts the B&O Railroad as I remember it from my childhood days. Having grown up next to the railroad in Riverdale, Maryland, I have many memories of the B&O. My layout reflects some of these memories.

The B&O is known for hauling coal and the design embraces this theme with a coal mine shaft and coal tower.

Because of the limited space my set is a 5 by 9 design. To maneuver in the limited space many trestles were included. The trestles vary in design. Most of them reflect the deck truss design. But the staining beam pony trestle design is featured in the center of the layout."

Ray

Ray hand built the eight trestles on his layout and learned how to cut the timbers to 1/16th of an inch. Each one took one year to build. Wow!



Continued on next page

Show & Tell

Tom Swearingen's Backdrop Artwork

Tom started painting after retiring with the goal of painting backdrops. His painting took off in another direction (see the bottom of the page). He has just started painting backdrops and as he says, "It just took me a few years to get the focus back!!!" His current backdrop project is with Paul Weiss' Central Vermont layout. If you would like to learn more about Tom's backdrop painting techniques you may contact him at twswearingen@gmail.com.



A few of Tom's railroad paintings.

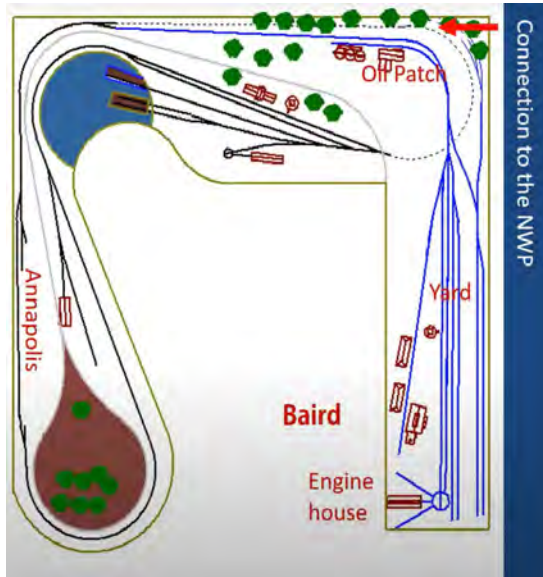


Continued on next page

Show & Tell

Bill Kaufman's San Francisco & Colorado Layout

Bill built his garage layout (12x12) to represent as he says, "1929 as it should have been, not as it was." It was based in northern California with a connection to the Northwestern Pacific. These are a few pictures from his presentation. The layout has since been replaced by his State Belt layout.



From Baird to Oil Patch



Baird Yard. The NWP is off to the right.



Vern and Dr. Ed making a mess of something



My friend Philip and his brother-in-law trying to sort out Baird

Crossing the double trestle headed out of Annapolis



Continued on next page

Show & Tell

Adam Palmer Weathering Projects

Adam showed his weathering techniques through photos of rolling stock and locomotives on his layout. He bases his modeling techniques on those used by Jim Hediger, Malcolm Furlow, Gordon Odegard and various YouTube videos. Adam has taken his weathering techniques and started a business - **Adam's Model Railroad Services**. His ad can be found in the **Advertising** section at the end of this newsletter.



Continued on next page

Show & Tell

John Huckaby's Diorama

John is well known for his whimsical dioramas. For this meeting he presented his diorama entitled **Yesterday, Today** and, **Tomorrow**. A circular rotating diorama, it presents three views of a gas station that was across the street from the mainline. **Yesterday** presents a new gas station with filling station attendants. **Today**, while there is still plenty of business, the gas station is showing it's age. **Tomorrow** shows the station being torn down while the owner supervises the demolition. So too has the railroad seen a decline in freight and passenger traffic.



Continued on next page

Show & Tell

Dave Grundman - Moveable Uncoupling Magnets

Dave presented a summary from an article in the Great Northern Railway Historical Society's GNRHS Modelers' Pages, by Jeff Otto, on a "Movable Uncoupling Magnet". The goal is to avoid the rat's nest wiring associated with electronic uncouplers. Jeff is a member of the Twin Cities Division of the Thousand Lakes Region and has graciously allowed us to print a copy of the article.

Moveable Uncoupling Magnets on the Missabe Northern

By Jeff Otto

I happen to prefer minimizing the need for giant hands to reach into a model scene to perform uncoupling tasks and throw track switches. Such distractions by one operator can spoil the panorama of other operators enjoying being an active part of a large yard, for example, with several engines in motion at once performing their work. I also want to be able to uncouple passenger cars equipped with diaphragms while they are flanked by passenger platform canopies, spot a car just inside a warehouse so the coupler won't block the warehouse door, or not try to reach in four feet to uncouple cuts of ore cars on one of my ore docks.

Magnetic couplers offer opportunities for realistic switching operations in these situations not easily accomplished by other methods of uncoupling, if at all. There are also locations where magnetic uncoupling is desired only as needed. So the early history of magnetic uncoupling included the use of relatively inexpensive permanent magnets as well as electro-magnets between the rails, typically energized by a simple push button circuit. But electro-magnets were much more expensive or rather time consuming to make your own in quantity. The very large size of my Missabe Northern in HO made cost and simplicity key design considerations.

The desire for less-visible magnetic uncoupling led to the development of under-track magnets powerful enough to reliably perform the uncoupling task while being fully hidden under track and ballast, such as offered by Kadee and Bachmann. My track maintenance crew helps out by marking bad ties with a paint dot. By amazing coincidence these "bad" ties are all centered over a magnet and also mark the safe clearance point on yard and industry tracks (a common uncoupling location).

But my tall Homasote spline roadbed would not allow a tall vertical hole to accept an electro-magnet or a simple trap door to swing a permanent magnet down away from the rail level.

The simple solution was to create a trench just deep enough to allow a magnet to slide horizontally under the track. This is inexpensive and the magnet stays where you want it without dealing with an electrical switch or a latch for a trap door. I mark the position on the roadbed, then use a router to "dig" the trench.

This image shows the magnet in the "on" position, centered under the planned track.

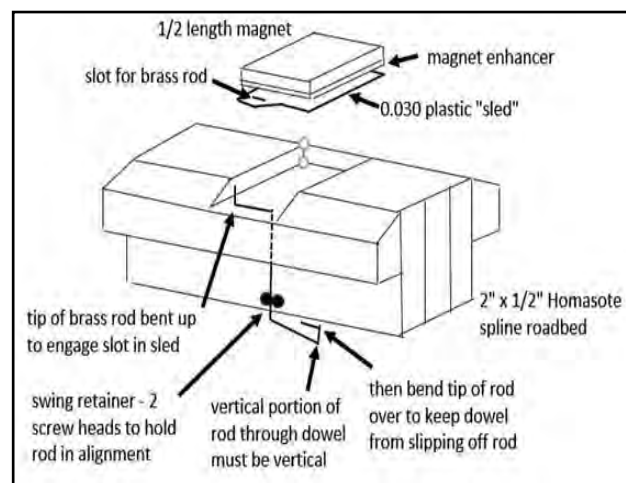
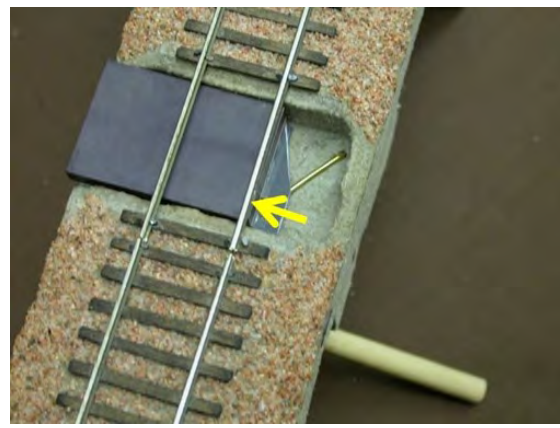
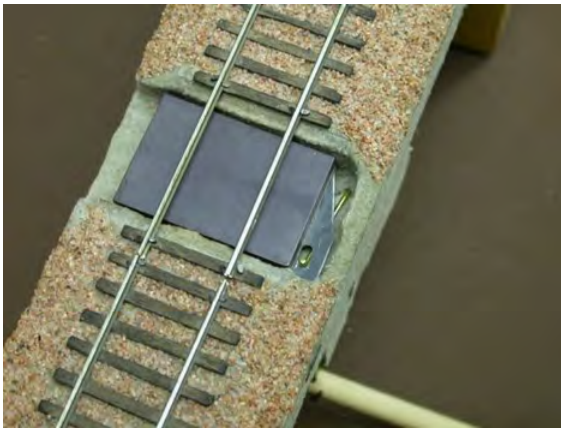
The next image shows the magnet in the "off" position where one edge is under a rail, about 3/8" over



Continued on next page

Show & Tell

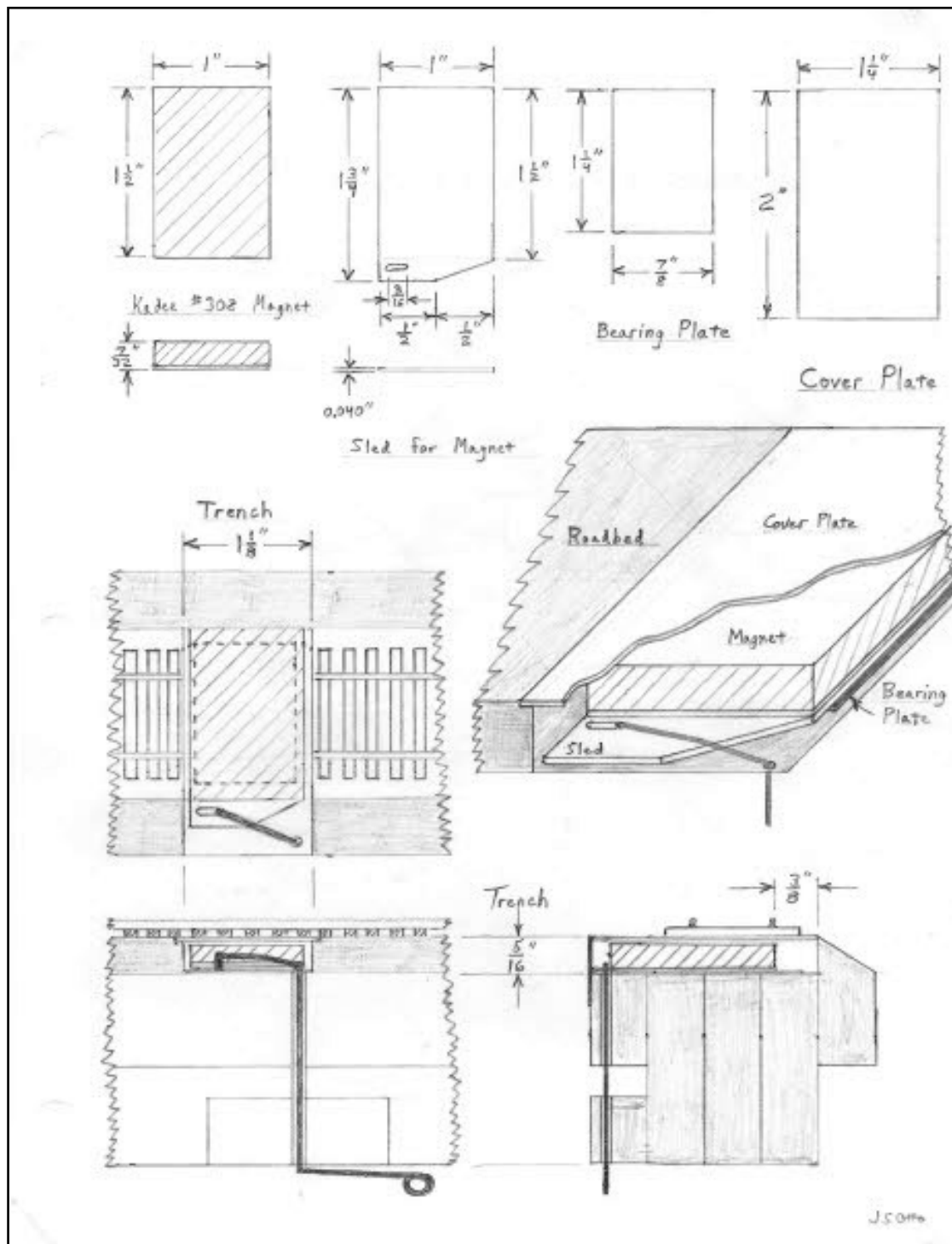
from centered position. The finishing steps are to cover the trench with 1/64" aircraft plywood and position your track or ties, if hand laying, and blend in with your chosen ballast. The plywood will need to stick out wider on the side the magnet shifts to, so I orient the wide side toward the back of the scene so the foreground side blends with the adjacent ballast profile.



Continued on next page

Show & Tell

Moveable Uncoupling Magnets



Continued on next page

Show & Tell

Joe Deveney's Avery, Idaho Milwaukee Road Depot

Due to technical issues Joe could not do his Show & Tell presentation during the meeting. Joe is showing his scratchbuilt model of the Avery, Idaho depot on his Milwaukee Road layout. This is the point where steam and diesel locomotives changed to electric locomotives for the trip east to Harlowton, Montana.



Science and Imagination Railroad



The Science and Imagination Railroad is a large scale model railroad that operates daily in the Ernest L. and Ruth W. Finley Foundation Science & Imagination Hall at the Children's Museum of Sonoma County. The Railroad consists of 250 feet of two continuous loops of track suspended from the ceiling. There are interactive controls at the Mezzanine Train Station where you can activate a Train Conductor's All Aboard Announcement, a steam train whistle & bell and start the train in motion.

Also located on the Mezzanine Level opposite the Train Station is a replica of a passenger car where visitors can view videos from the perspective of the train. Other G-Scale train layouts can be viewed here as well. Just around the corner is a large display case with a variety G-scale locomotives and train cars on display.

Click here for a video of the [Science and Imagination Railroad](#)



Sponsored by The Gary Rasche Estate. Ongoing maintenance generously provided by Redwood Empire Garden Railway Society and Hunter's Train Depot.

Children's Museum of Sonoma County
1835 W. Steele Lane, Santa Rosa, CA 95403
Phone: 707-546-4069

Online Model Railroading

National Model Railroad Association

The NMRA provides a vast source of model railroading resources for it's members.

<https://www.nmra.org/>

NMRA Video Library

A comprehensive library of videos covering all facets of model railroading. You must be a member to access this website.

<https://www.nmra.org/members/videos>

National Convention Clinic Videos

A source for 147 videos presented during National Conventions. You must be a member to access this website.

<https://www.nmra.org/clinic-videos>

Special Interest Groups

Information about railroad and model railroad organizations which have chosen to join the NMRA Special Interest Group Program.

<https://www.nmra.org/special-interest-groups>

Forums

Discussions about the NMRA and its organizational structure, Education and Standards, model railroading, prototype railroads and more. You must be a member to access this website.

<https://www.nmra.org/forum>

NMRA Data Sheets

One of the benefits of membership in the NMRA is access to the series of Data Sheets which have been compiled over the years. You must be a member to access these website.

<https://www.nmra.org/members/legacy-data-sheets>

<https://www.nmra.org/members/data-sheets>

NMRA Turntable

The NMRA's Turntable is a monthly publication which, like a railroad turntable, will lead you in several directions on the Internet. This e-publication is a collection of railroad and model railroad videos, podcasts, websites, and/or other information freely available on the internet that may be of interest to members.

NMRA Partnership Program

A list of companies that give NMRA members discounts for buying their products when using a special discount code. Members can visit the Partnership Page to view the list of companies participating in this program.

<https://www.nmra.org/partnerships>

Continued on next page

Online Model Railroading

National Model Railroad Association

NMRA Live Programs

The NMRA presents live video programs that cover a wide variety of topics. As a member of the NMRA, you will receive notification of the live programs. Many of the video programs are recorded if you missed the live presentation.

Social Media

The NMRA is available through many social media platforms:

NMRA Facebook Page

<https://www.facebook.com/NMRA.org/>

NMRA YouTube Page

<https://www.youtube.com/c/NMRAORGModelRailroading>

NMRA Twitter Page

<https://twitter.com/nmraonline>

NMRA Instagram Page

https://www.instagram.com/nmra_online/

NMRA Pinterest Page

<https://www.pinterest.com/nationalnmra/>



Pacific Coast Region—NMRA



The PCR has also moved to more online activities, especially staff meetings. All indications are that online meetings are working well and will continue until the pandemic finally subsides. The Pacific Coast Region website provides links to all PCR Divisions as well as all PCR documentation, contact information, Branchline newsletter access, PCR calendar, and convention clinics.

<http://www.pcrnmra.org/>

PCR - Clinic Presentations

The PCR provides a broad selection of clinics from PCR conventions going back to 2013. Presentations are available to download as PDF files.

<http://www.pcrnmra.org/pcr/clinics/clinics.shtml>

PCR Branch Line Back Issues

Branch Line back issues going back to 2001.

<http://www.pcrnmra.org/pcr/branch/branch.shtml>

PCR Facebook Page

<https://www.facebook.com/pcrnmra/>



The Coast Division hosts interactive Saturday Morning Virtual Zoom Meetings at 9:00 am, Saturday mornings twice a month. The meetings will generally include one or more segments of Layout Tours, Clinics, Show and Tell, or general discussion. Please visit their website for more information.

Website: <http://www.pcrnmra.org/coast/>



Daylight Division - PCR DaylightDivisionPCR@groups.io

The Google group supports discussion, image, and file-sharing activities of the Daylight Division of the Pacific Coast Region of National Model Railroad Association, Inc., a California nonprofit corporation dedicated to promoting education, social activities, achievement, and contests the hobby of model railroading.

Google groups: <https://groups.io/g/DaylightDivisionPCR>

Website: <http://www.pcrnmra.org/daylight/>

Pacific Coast Region—NMRA



The Redwood Empire Division has started hosting Show & Tell Zoom meetings. Thanks to Al Merkrebs for taking the initiative to host the first meeting.

A RED Facebook page has been created to provide another online venue for members to share their modeling activities. This site is available to all NMRA members.

RED Facebook page: [Redwood Empire Facebook Page](#)

RED Website: <https://www.nmra-red.org/>



Website: <http://www.pcrnmra.org/sierra/index.html>

Other Resources

Online resources are growing every day. Here are just a few.

YouTube

YouTube provides videos covering every conceivable model railroading topic, including tutorials by many manufacturers. There are many amateur tutorials as well, some better than others, so be prepared to do a bit of searching to find the answer to your question. YouTube also provides access to museums, tourist railroads, etc.

Hobby Magazines

Most hardcopy and online magazines provide access to information and tutorials. A few are free, and some require a subscription. Don't limit yourself to just model railroading publications. Other modeling magazines are a gold mine of information, especially in painting and finishing techniques, dioramas, tools and photographing models.

Modeling and Historical Societies

Many model railroad and historical societies provide a wealth of information particular to a specific railroad. They also offer access to many museums and private archives, many of which continue to move their documentation and photos to digital format for online access.

Public Model Railroad Layouts

Many large public model railroad layouts may also have archived information on the building, design and layout of their layouts. For example, the Golden State Model Railroad Museum provides information about their layout and links to prototype layouts and museums.

RED Website: <https://www.nmra-red.org/>

Redwood Empire Division Facebook Page

The RED has a Facebook page. If you have contributed to this issue's Show & Tell section please consider contributing your modeling activities to the Facebook page. This is just another way to share model railroading with other model railroaders in the RED.

Redwood Empire Division Facebook Page

Redwood Empire Division - PCR/NMRA

Private group

About

Discussion

Rooms

Members

Events

Photos

Watch Party

Moderate Group

Group Quality

Search this group

Shortcuts

Redwood Empire Divisi...

Write something...

Photo/Video

Create Room

Watch Party

NEW ACTIVITY

Scott Lockhart 2m

The Union Pacific rostered GTEL (gas-turbine electric) locomotives from 1949 until final retirement in 1970. Built by GE, the locomotives used Bunker C heavy fuel oil to fire the GE Gas Turbine prime mover. Athearn produced models of the second and third generation gas-turbines. The second-generation locomotives were called "Verandas", because of the open walkways on each side of the car body. I am updating the model with a Tsunami2 decoder that includes UP gas turbine specific sounds with a Tsunami Current Keeper. I am replacing all of the bulbs with LED's, adding marker and number board lighting, and a new speaker.

UNION PACIFIC

POPULAR TOPICS IN POSTS

Show & Tell (0)

INVITE MEMBERS

Embed Invite

+ Enter name or email address...

INVITE FRIENDS

Ask your friends to join the group and add to the discussion.

Karen Lockhart Invite

Giuseppe Aymar Invite

Gus Campagna Invite

MEMBERS

24 members

DESCRIPTION

First things first. This is a private group. Only members can se... See More

GROUP TYPE

General

LOCATION

Petaluma, California

RECENT GROUP PHOTOS

See All

Redwood Empire Division Webpage

[Redwood Empire Division Webpage](#)

The NMRA Redwood Empire Division

We've got Convention Fever! April 21-24, 2022 Rohnert Park

CLICK HERE TO HYPERJUMP TO CONVENTION HOME PAGE

Home Member Layouts CALLBOARD RED Officers About the NMRA Contact Us

Welcome

We are a membership organization of model railroading enthusiasts, part of the National Model Railroad Association which has 18,000 members around the world spread across 5 Regions. The Pacific Coast Region includes California,

Our Division is comprised of NMRA members in Northern California from the following counties:

Marin, Sonoma, Napa, Solano, Lake, Mendocino, Humboldt, and Del Norte in the state of California.

In 2021 our Redwood Empire Division had 111 members.

Webpage Contents

- List of RED clubs, member's layouts, and nearby attractions
- Access to past issues of the Callboard
- RED Officers and Staff
- About the NMRA
- Contact Us

Clubs in the RED

Please check the club's websites for information on holiday activities.
Please observe club's COVID protocols.

Coastal Valley Lines Modular Railroad

The Coastal Valley Lines Model Railroad Club of Sonoma County, LTD (CVL) is an association of novice-to-expert model railroaders from around the Sonoma County, California area. We operate our HO modular railroad at public and private events and gather for clinics, work sessions, and regular monthly meetings. Visit the website for additional information. [Coastal Valley Lines Modular Railroad](#)

Eel River Valley Model Railroaders

It is the purpose of the Eel River Valley Model Railroaders to preserve the rich history of the Northwestern Pacific Railroad and the history of the North Coast of California. The club has a series of modules depicting several areas of the Northwestern Pacific Railroad between Schellville and Eureka, California. Our goal is to preserve the rich heritage of the railroad and the North Coast through these representations of the past. Please go to the club's website for information on visiting the layout.

The Humboldt Bay and Eureka Model Railroad Club

The Humboldt Bay and Eureka Model Railroad Club is the largest, most active model railroad club in Humboldt County. It has existed in the same location for about 40 years. The large layout is freelanced but with many scenes based on NWP locations. The club typically meets each Saturday at 7:30 pm. Visitors are welcome. Open house occurs during Veteran's Day and Rhododendron Days Weekends. The club is located at 7th and A Streets in Eureka, CA.

[The Humboldt Bay and Eureka Model Railroad Club](#)

Mendocino Coast Model Railroad and Navigation Company

See logging history brought to life at this walk-around large G-Scale layout representing a history of logging and the railroads located in the Redwood Empire. Over 1300ft of track - equivalent to 6 miles - with views of a mill, logging camp, town, pier, bridges, and trestles.

Hours: 10:30 - 2:30 pm: every day except Tuesdays and Thursdays.

[Mendocino Coast Model Railroad and Navigation Company](#)

North Coast Historical Model Railroad Society (NCHMRS)

The club operates an HO scale layout based on the Northwestern Pacific Railroad as it ran in the 1950s through Sonoma County to Ukiah. The club is building the layout as a display for the Depot Museum and will be located in the historic Healdsburg Freight Depot. Stop by on the 3rd Saturday of each month as we open the doors to the depot. [North Coast Historical Model Railroad Society](#)

Redwood Empire Live Steamers Interactive Museum

The Redwood Empire Live Steamers is a non-profit organization dedicated to preserving Sonoma County's Railroad history through re-creation, railroad equipment, and historic landmarks in miniature.

[Redwood Empire Live Steamers Interactive Museum](#)

Continued on next page.

Clubs in the RED

Please check the club's websites for information on holiday activities.
Please observe club's COVID protocols.

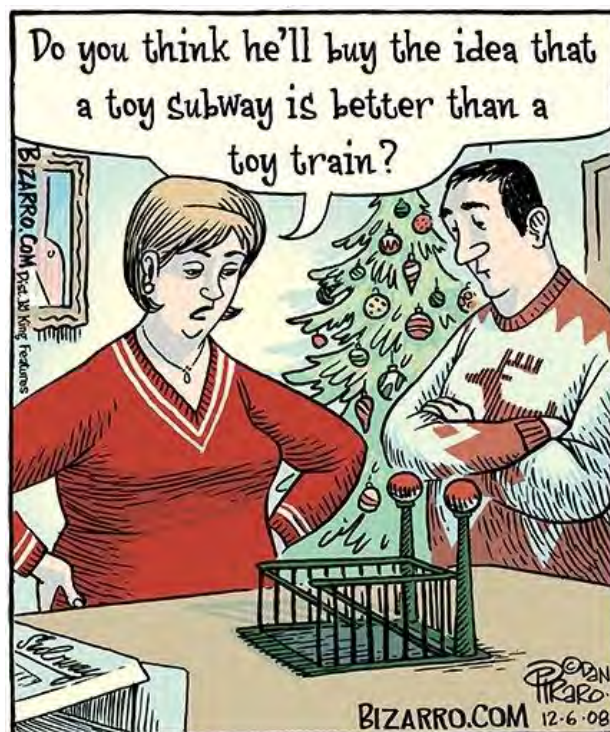
Sonoma Short Line Modular Group

The Sonoma Short Line modular group is loosely based on the Southern Pacific branch line from Sonoma through Glen Ellen and Melitta Station to the old Santa Rosa Depot on North Street. They are currently looking for new members. Contact Steve Lewis for more information. Phone: 707-527-0396, Email: sdlewis@cds1.net

The Redwood Empire Garden Railway Society

The REGRS is a loosely knit club of garden railroad enthusiasts from areas north of the famous San Francisco Golden Gate Bridge who share an interest in model trains. Our members are primarily located in Sonoma County and Marin County. Contact the club for public tours and shows.

[The Redwood Empire Model Railway Society](#)



Continued on next page

Advertisements

Please support your local model railroad businesses.

Adam's Model Railroad Services



Providing weathering, decal, and basic repainting services
for model railroad engines and cars of all scales.

Adam's Model Railroad Services
L12 Locust Ave, Kentfield, CA 94904
modelrailroadoperations@gmail.com
(415)-488-3129

Place your ad here.

Place your ad here.

Place your ad here.

If you are interested in advertising in the Callboard, please contact Scott Lockhart at
scottnl1947@gmail.com or 707-775-9889.