



CALLBOARD

FALL 2022

RED Website: <https://www.nmra-red.org/>

FALL 2022 CALLBOARD

Points of Interest

Welcome to the Summer
2022 RED Callboard
Page 1

[Director's Report](#)
Page 2

[Superintendent's Report](#)
Page 3

[Chief Clerks Report](#)
Page 4

[Membership Report](#)
Page 4

[Winter 2023 Meeting
Announcement](#)
Pages 5 - 25

[RED Fall Meeting Report](#)
Pages 6 - 26

[Modifying the Roma
Convention Car](#)
Pages 27 - 37

[RED Facebook Page](#)
Pages 38 - 39

[RED Website](#)
Page 40

[Clubs in the RED](#)
Pages 41 - 42

[Estate Sale](#)
Pages 42 - 43

[2023 PCR Convention](#)
Page 44

[2023 NMRA Convention](#)
Page 45

[Happy Holidays!](#)
Page 46



Welcome!

On Saturday, October 19th, the Wine Car Convention Car. Lunch was provided by Mary Moore Campagna, Redwood Empire Division held its first hybrid meeting. Hybrid Meeting? RED members met at Monroe Hall in Santa Rosa for the first time since our winter 2020 meeting. The meeting was also available via Zoom for members who could not attend the meeting in person. Many thanks to Paul Weiss, Al Merkrebs, Ed Merrin, Gus Campagna, and Dave Grundman for their hard work.

The meeting started with five Show & Tell presentations. Next up was Dave Turner and his upgrading of the Roma

Wine Car Convention Car. Lunch was provided by Mary Moore Campagna, followed by Paul Weiss presentation on his Vermont Central Railway layout. A copy of his presentation is attached to the meeting email. The full meeting report will be found on page 5. Raffle and door prizes closed the meeting.

Our Winter 2023 meeting will be held at Monroe Hall, in Santa Rosa, and on Zoom, on Saturday, February 18, 2023.

Past Callboards are available for viewing on the [RED website](https://www.nmra-red.org/).

RED Website: <https://www.nmra-red.org/>

RED Staff**PCR Director**

Giuseppe Aymar
giuseaymar@aol.com

RED Superintendent

Paul Weiss
paulbweiss@mac.com

RED Chief Clerk

Dave Grundman
dave_pat_1999@yahoo.com

Contests/AP Program

Giuseppe Aymar MMR
giuseaymar@aol.com

Programs/Zoom

Al Merkrebs
alm@sonic.net

Membership

Gus Campagna
campgus@earthlink.net

RED Facebook Page

Bill Kaufman
bill@statebelt.org

RED Website

Paul Weiss
paulbweiss@mac.com

CALLBOARD Editor

Scott Lockhart
scottnl1947@gmail.com

Director's Report - Giuseppe Aymar**Oct 8, 2022**

The Board recognizes the on-going membership situation and is working hard to improve participation and enjoyment in the hobby. This meeting was a lengthy one covering disparate agenda items all aimed at improving our membership's satisfaction. The following is a synopsis of the agenda items proposed and discussed

1. Treasurer report
 PCR finances holding steady. As of Sept 30, 2022 - \$ 77,754.33
2. Conventions
 - Looking into making Sunday a full Convention day to accommodate working members (members who have jobs Mon – Fri).
 - Investigating how to lower the cost of meals which have gotten exorbitantly expensive threatening the financial integrity of Conventions.
 - Developing an in-person/ hybrid format starting with the Convention in Sacramento 2023.
 - Introducing remote clinicians via Zoom to tap into a National/ International base to deliver exciting and diverse topics.
 - Denni Baumer, Lou Anderson, Chip Meriam's study group to look into various Convention formats and dealing with host venues such as Hotels, Convention centers or smaller facilities.. Denni is experienced with Hotel contracts, making her an indispensable point person. (see below).
 - Set up a "Permanent Committee" instead of the current "Host Committee" structure to maintain a grounded "brain power", thusly not having to "reinvent the wheel" each time.
3. Net profit from NMRA National 2022
 To be split as follows:
 - \$ 2520.74 to go to PCR recruitment committee
 - \$ 1000.00 to go to PCR Conventions reserve fund
 - \$ 1000.00 to go to PCR headquarters
 - \$ 1000.00 Coast Division
 - \$ 1000.00 Daylight Division
 - \$ 1000.00 Redwood Empire Division
 - \$ 1000.00 Sierra Division
 Each Division to use these funds at their own discretion.
4. Establish a committee on " Estate Appraisal and Estimation"
 - a. Have Regional experts for each scale (O, S, HO, etc.) and subscales (On3, Hon3, etc.) to help the surviving spouse/significant other with the disposition of Railroading artifacts.
 - b. Basically have a Directory of Experts.
5. Discussion at the National level moving forward for a new museum near the present train museum in Sacramento. The museum would hold the

Continued on next page

RED Staff**PCR Director**

Giuseppe Aymar
giuseaymar@aol.com

RED Superintendent

Paul Weiss
paulbweiss@mac.com

RED Chief Clerk

Dave Grundman
dave_pat_1999@yahoo.com

Contests/AP Program

Giuseppe Aymar MMR
giuseaymar@aol.com

Programs/Zoom

Al Merkrebs
alm@sonic.net

Membership

Gus Campagna
campgus@earthlink.net

RED Facebook Page

Bill Kaufman
bill@statebelt.org

RED Website

Paul Weiss
paulbweiss@mac.com

CALLBOARD Editor

Scott Lockhart
scottnl1947@gmail.com

model railroading exhibits. The cost to the NMRA is estimated around \$2,000,000.

6. A proposal is on the table to amend the by-laws (article 4 sect 5) to reduce the Quorum at the annual business meeting from the present 35 to 25 members since the Region's membership has declined from 1500 members to 800 members. To be voted on by the membership at the Business breakfast in 2023. (Hopefully we'll have the Quorum to vote on it).
7. The Board is looking to set up the October mid-year Zoom meeting to start at 10:00 am while keeping the in-person meeting at the Convention site at 1:00pm
8. Each Director is responsible to submit a Certified list of Division Officers to be sent to NMRA to satisfy National's Insurance program.
9. Final thought

It is important to remember that your Director is your liaison to the PCR Board. If you have any topic you want to see included as part of the Board's next agenda please feel free to contact me any time at giuseaymar@aol.com .

Giuseppe Aymar, DDS, MMR

Superintendent's Report - Paul Weiss

Hello all,

The Redwood Empire Division enjoyed a return to our traditional roots with our first in person Meet since the pandemic. My confession: I hadn't ever been to one and, because it was the first of its kind in so long, I had doubts about how well attended it would be. In fact, we had a robust turnout, some terrific modeling projects that were the show and tell, and perhaps least exciting was a lengthy presentation by me about our Central Vermont in Northern California project. No rotten tomatoes were thrown... which I attribute to the strict "no food in the main ballroom" rule at Monroe Hall. That said we did enjoy lunch together too... in the kitchen/dining area!

This was a landmark Meet in another way too, it was our first HYBRID MEET where viewers from afar could "zoom in". Getting this initiative off the ground at all was a matter of great pride for us... we did get numerous zoom attendees and two of them even won door prizes. This helped us affirm our commitment to doing more HYBRIDS. However, technical difficulties did plague us despite much preparation and a dress rehearsal conducted by the staff. My camerawork was deemed as lacking, rightfully so I'm sure, and the call both went dead for a while and suffered some audio challenges despite the microphones we had tried to use and successfully auditioned. I mention these shortcomings to honestly concede that while we delivered a useful product, it is clearly needing even more careful attention to get it just right.

Continued on next page

RED Staff**PCR Director**

Giuseppe Aymar
giuseaymar@aol.com

RED Superintendent

Paul Weiss
paulbweiss@mac.com

RED Chief Clerk

Dave Grundman
dave_pat_1999@yahoo.com

Contests/AP Program

Giuseppe Aymar MMR
giuseaymar@aol.com

Programs/Zoom

Al Merkrebs
alm@sonic.net

Membership

Gus Campagna
campgus@earthlink.net

RED Facebook Page

Bill Kaufman
bill@statebelt.org

RED Website

Paul Weiss
paulbweiss@mac.com

CALLBOARD Editor

Scott Lockhart
scottnl1947@gmail.com

Bear with us! Innovation requires making mistakes and learning from them. RED will have a robust hybrid offering in the year ahead, and already some ideas to improve are being executed.

It's obvious from the pages of this issue that model railroad events and video conferencing will go hand in hand for as far out as we can all see. I hope you will join us next time (late February) and take full advantage of the excellent offering that other regions and individual modelers have been hosting throughout our Region and beyond.

Best wishes to all for a healthy and happy season.

Paul Weiss

Redwood Empire Division Superintendent

Chief Clerk's Report - David Grundman

The latest bank statement shows a balance of \$7520.05 which includes a recent deposit of \$1000.00 from the PCR as part of the Spring 2022 PCR convention. Deduct \$125.00 in door prizes for a current bank balance of \$7395.05.

The R.E.D. meeting proceeds of \$45.00 were placed in the cash drawer.

Membership Report - Gus Campagna

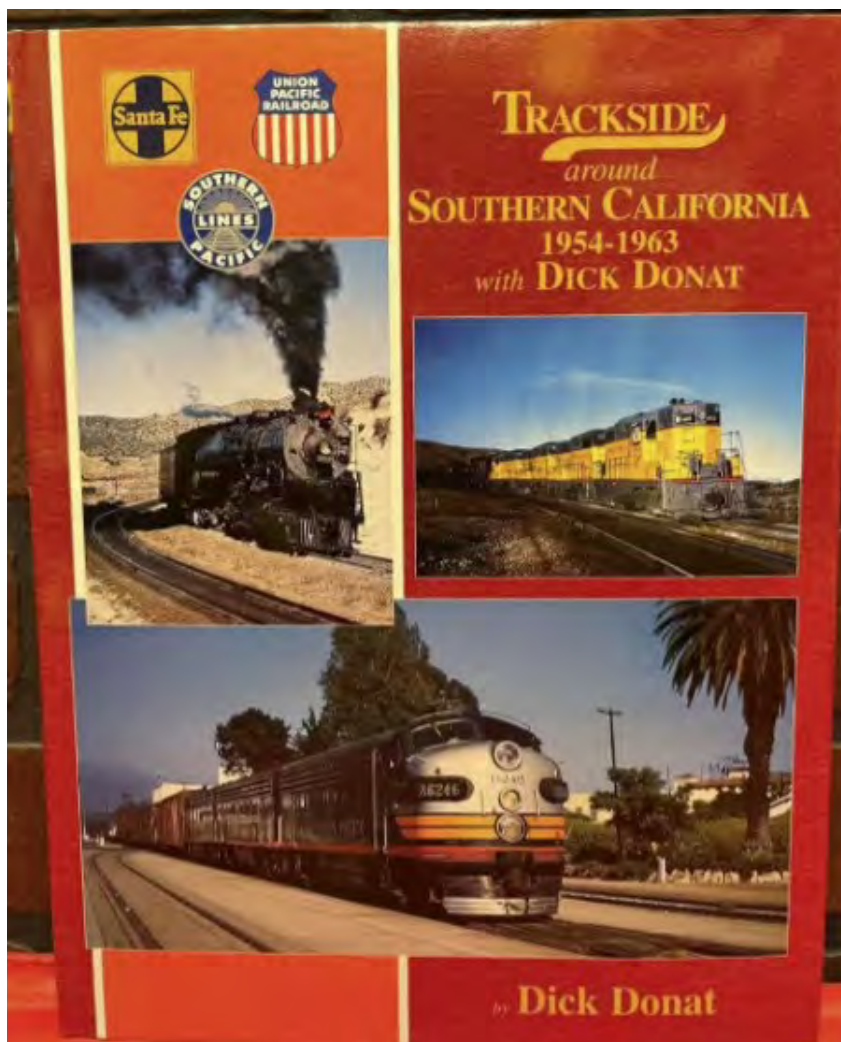
Based on the October 2022 NMRA report RED membership stands at 103.



2023 WINTER MEETING

The Winter 2023 RED meeting will take place on Saturday, February 18th, 2023 at Monroe Hall, Santa Rosa and on Zoom. Meeting details will be sent to you in January. Al Merkrebs has arranged for a guest speaker for this meeting. I'll let Al do the introduction.

"Dick Donat is a friend of mine from the Northwestern Pacific Railroad Historical Society where he does volunteer work. He grew up in Southern California and did a lot of railfanning with his father down there when he was growing up. He wrote a published book about all his experiences, entitled "Trackside around Southern California, 1954 to 1963". Dick has encyclopedic railroad knowledge. He will give a PowerPoint presentation showing his book and telling his experiences."



2022 FALL MEETING



HYBRID RED MEET

November 2022

The meeting started at 11:00 once the internet connection was established. Seventeen members attended the meeting in person with seven members attending via Zoom. This was our first attempt at a hybrid meeting. There were a few glitches with the Zoom portion of the meeting which will be addressed before the Winter 2023 meeting in February.

As people arrived, each was given one white ticket for the raffle and one red ticket for a door prize. Each of the Zoom meeting attendees were assigned one white ticket (didn't come through the door so no red ticket). Two door prizes consisted of a check for \$75.00 and a check for \$100.00. The drawing at the end of the regular meeting for the door prizes resulted in \$75.00 to Dave Croshere and \$100.00 to Paul Weiss. Paul donated the \$100.00 back to R.E.D.

Additional white raffle tickets were available for \$1.00 each or 6 for \$5.00. Five people purchased the 6 for \$5.00 deal.

A variety of railroad items plus two baseballs (?) were available for the raffle. The baseballs are gone sad to say. Several other raffle donations were also received. In addition to the raffle items, we have a few convention cars from the PCR Spring convention priced at \$20.00. One was sold at the meet. Each of the Zoom participants were assigned a white raffle ticket with two winners drawn. Dave Norris and John K both chose boxcar kits which will be mailed to them.

At the end of the regular meeting, we had lunch provided by Mary Moore Campagna for a nominal charge.

We then retired to the main room for a presentation by Paul Weiss about the history of his Central Vermont Railroad – Southern Division. From the purchase of the building in Novato, renovations and revisions to what it is today. This is a must visit and see for those who have not been there.

Continued on next page

2022 FALL MEETING

Show & Tell

Thanks to David Turner, Verne Alexander, Ron Kaiser, David Grundman, and Steve Skold for their contributions to the Show & Tell part of the meeting.

Dave Turner



"I created a ballast load for an SP&S Hart Convertible ballast car (from Atlas HO). I cut a piece of wood to fit, sprayed it, and glued sifted volcanic pumice cinders in three piles. The pumice stone came from a roadside pile (on the public ROW) near Bend, Oregon and was the type used for ballast by the GN on their Klamath Division and the SP&S on the Oregon Trunk. A check of the list of assigned cars showed that in addition to ballast cars, drop-bottom gondolas and three-bay hoppers were assigned to pumice cinder traffic. The GN and SP&S listings of customers served showed that there were three shippers in the Bend area and that concrete block (6x6x12) manufacturers in many larger towns received the pumice cinders. This provided the data for waybills to be prepared for that traffic. More loads for different cars can now be built."

Continued on next page

2022 FALL MEETING

Verne Alexander



Verne Alexander's topic was "Rolling Stock Need Not Bankrupt You." Verne showed a variety of models from his Colville, Republic, and Paulouse, aka CRAP layout, that he was given or purchased and improved by adding a bit of paint, some decals, new couplers, and new trucks. Many of the models are works in progress but have been upgraded enough to operate on his layout.

Continued on next page

2022 FALL MEETING

Ron Kaiser



Ron Kaiser presented his model of the Portola station as it was in 1952. It is a very large building that is scratch built out of styrene. He drew rough plans from photos of this two story crew bunkhouse from photos, measuring off of a six-foot man on the platform. Even though he had set aside a large area on my layout for this building, it still had to be reduced by two windows in length, and a portion of the back of the model was left off. Considerable bracing was needed to keep the walls straight.

Continued on next page

2022 FALL MEETING

Steve Skold



Steve Skold showed prints from William Henry Jackson's *Rocky Mountain Railroad Album: Steam and Steel Across the Great Divide*. The pictures were taken using large cameras and glass plates between 1870 and 1900. Members were told that the prints were free to anyone in attendance.

Continued on next page

2022 FALL MEETING

Dave Grundman



On my Great Northern based layout, as with all railroads there has to be a need for a railroad to build a road and/or sidings. I have made use of several Walthers oil structures including a refinery, bulk oil loading platform and a fuel distribution truck loading station.

I next reviewed how to make use of a Google feature on my cell phone (my daughter taught me this one) that can be used to identify/price most anything. I have not tried this on people...yet. Some time ago I picked up a Great Northern boxcar lacking any manufacturer markings. The Google search window shows a microphone image and a camera image. Click on the camera image and take a picture of the item of interest.

In my case, several pictures of the same boxcar appeared along with manufacturer's name, prices, and sources. My boxcar was made by Tyco. This might be a good tool for train shows to give you an idea of what something might be worth and/or who the manufacturer is.

Continued on next page

2022 FALL MEETING

Lunch

At the end of the regular meeting, a delicious lunch was provided by Mary Moore Campagna.

Presentation - Central Vermont Railway Layout

Paul Weiss

We then retired to the main room for a presentation by Paul Weiss about the history of his Central Vermont Railroad – Southern Division. From the purchase of the building in Novato, renovations and revisions to what it is today. This is a must visit and see for those who have not been there.

Raffle & Door Prizes

As people arrived, each was given one white ticket for the raffle and one red ticket for a door prize. Each of the Zoom meeting attendees were assigned one white ticket (didn't come through the door so no red ticket). Two door prizes consisted of a check for \$75.00 and a check for \$100.00. The drawing at the end of the regular meeting for the door prizes resulted in \$75.00 to Dave Croshere and \$100.00 to Paul Weiss. Paul donated the \$100.00 back to R.E.D. Additional white raffle tickets were available for \$1.00 each or 6 for \$5.00. Five people purchased the 6 for \$5.00 deal.

A variety of railroad items plus two baseballs (?) were available for the raffle. The baseballs are gone sad to say. Several other raffle donations were also received. In addition to the raffle items, we have a few convention cars from the PCR Spring convention priced at \$20.00. One was sold at the meet. Each of the Zoom participants were assigned a white raffle ticket with two winners drawn.



Continued on next page

2022 FALL MEETING

Meeting Presentation

We then retired to the main room for a presentation by Paul Weiss about the history of his Central Vermont Railroad – Southern Division. From the purchase of the building in Novato, renovations and revisions to what it is today. This is a must visit and see for those who have not been there.

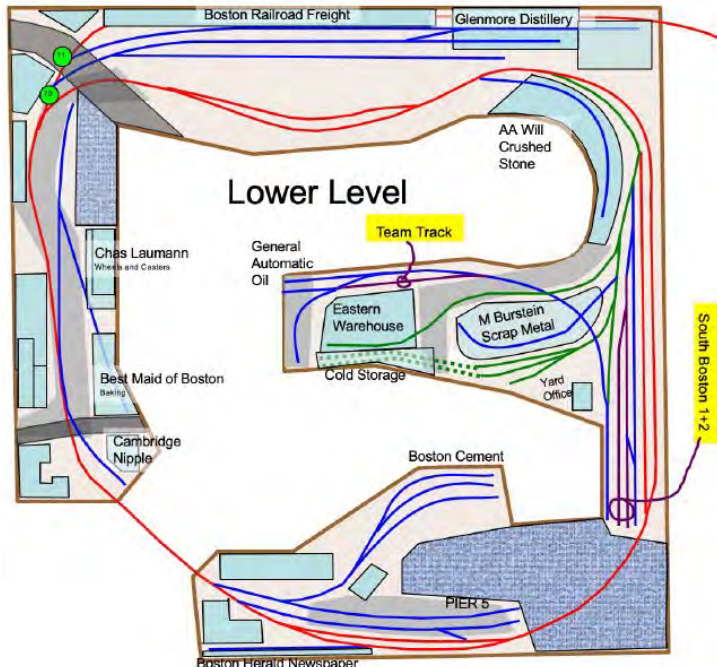
This is a summary of Paul's presentation. The full presentation is available as a PDF attachment to the Fall 2022 Callboard email.

Re-Introducing our “Central Vermont in Northern California” Layout

1. Paul's prior layout, inspirational opposite!
2. Design and Construction, Key Scenes
3. An Operating Layout: Scheme and Execution
4. Useful bits and pieces

Paul's (formerly) Dream Layout

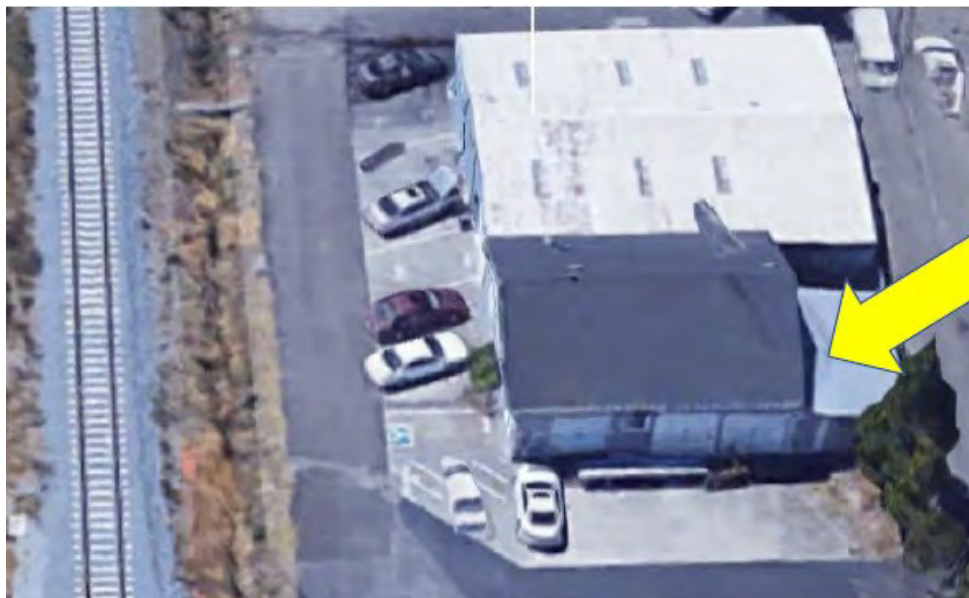
- 10 x 12 bedroom
- Years of ever better performance through obsessive trouble shooting no compromises
- Knew every wire, joint and rivet
- Semi scale wheels; proto:87 turnout frogs and details
- 98% of the work I did myself
- 4 man operating crew
- 1 duck under



Continued on next page

2022 FALL MEETING

New Layout - Building Came First



Our Goals

To design a layout which provides visitors with a comfortable and enjoyable prototype operations experience:

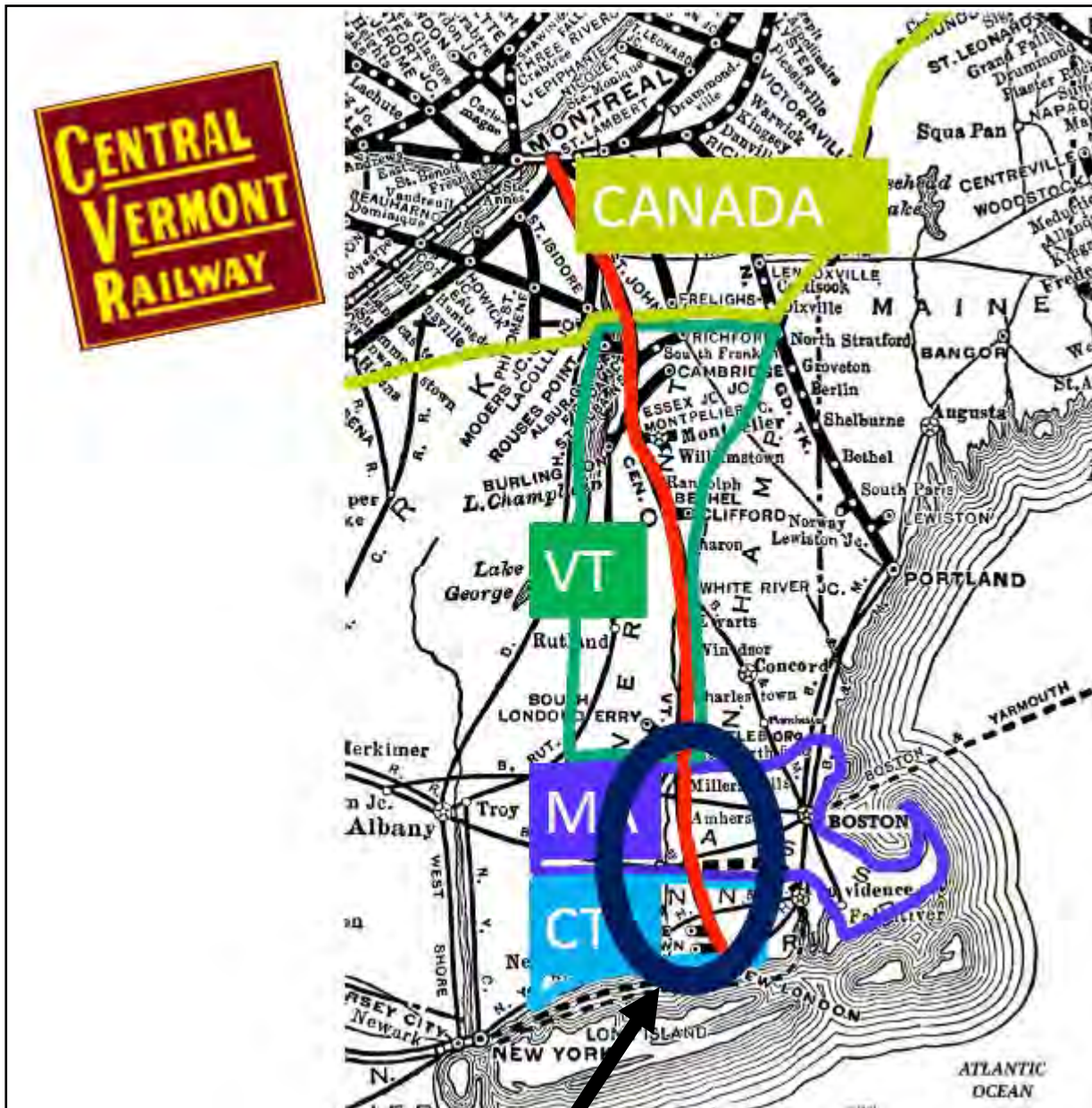
- A good operating scheme
- A good track plan
- Wide aisles and no duckunders or similar compromises

To faithfully represent a prototype that is not among the most frequently modeled, and bring it to the West Coast.

Continued on next page

2022 FALL MEETING

Prototype Location for the Central Vermont Railway



Location

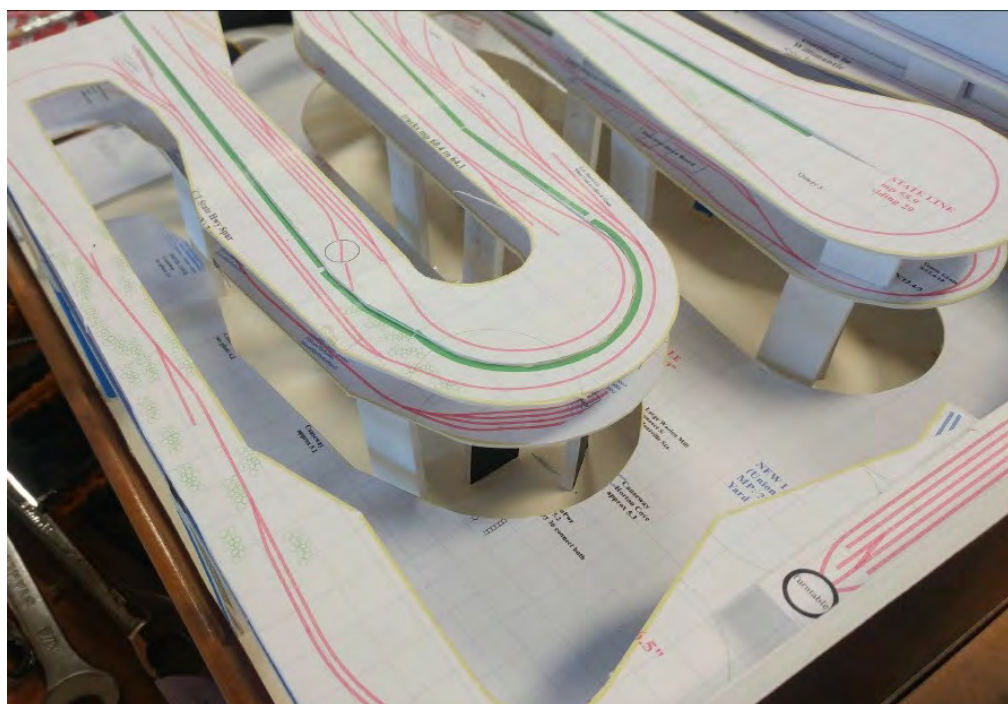
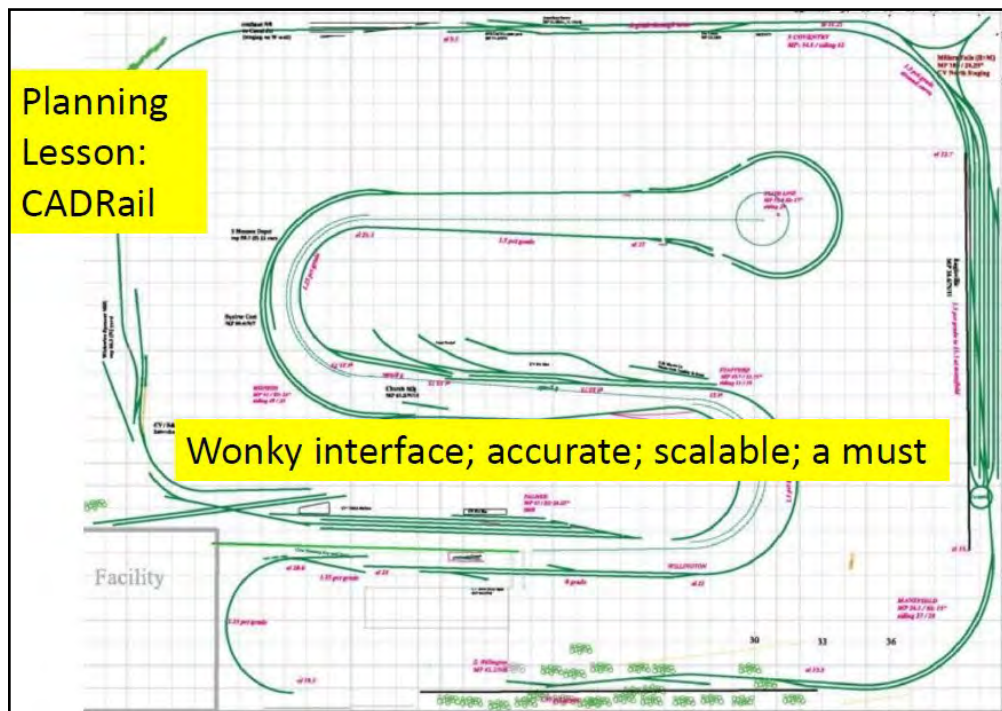
Continued on next page

2022 FALL MEETING

Layout Planning

Planning
Lesson:
CADRail

Wonky interface; accurate; scalable; a must



Continued on next page

2022 FALL MEETING

Building the Layout



March '17



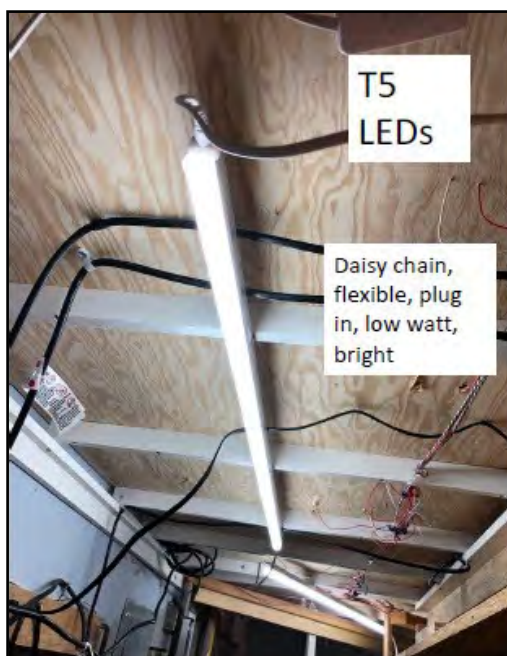
Oct '17



Continued on next page

2022 FALL MEETING

Building the Layout



Continued on next page

2022 FALL MEETING

Building the Layout



Continued on next page

2022 FALL MEETING

Key Scenes - Prototype and Layout

MANSFIELD
CT. COAL
TRESTLE



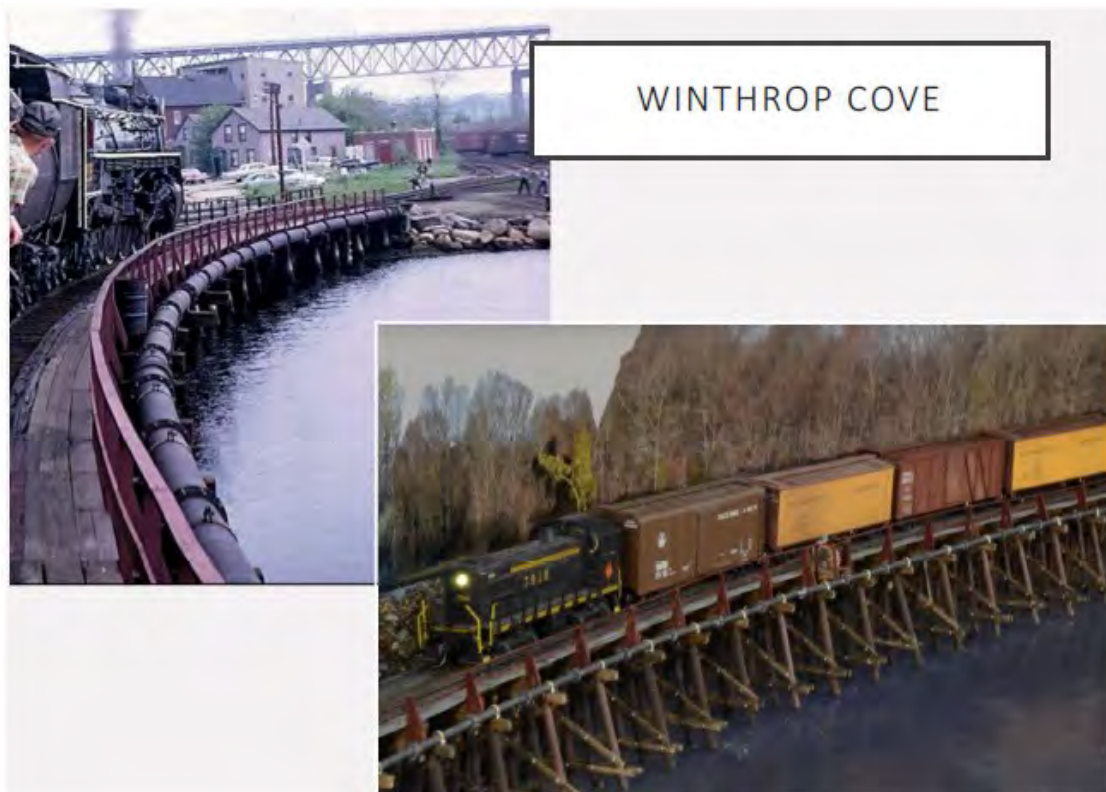
Paul Weiss photo



Continued on next page

2022 FALL MEETING

Key Scenes - Prototype and Layout



Palmer, Mass. was the usual water stop.
N-5a 472 took the train down the turntable lead on the May 22, 1955 trip.

Palmer, Mass Water Stop

Continued on next page

2022 FALL MEETING

Scenery



Continued on next page

2022 FALL MEETING

An Operating Layout

TYPICAL OPERATING SESSION STAFF

CHIEF DISPATCHER

ENL YARDMASTER

HEAD CLERK ENL

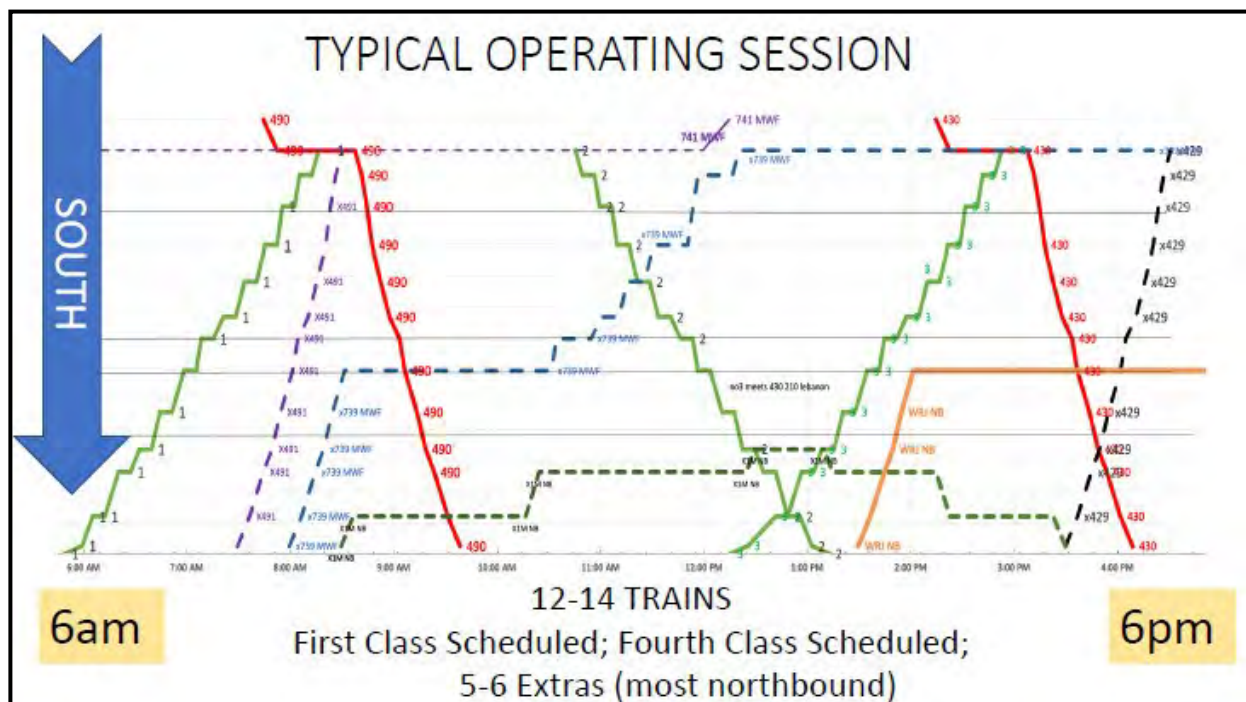
ASSOCIATE CLERK ENL

AGENT – NORWICH & STAFFORD

AGENT – WILLIMANTIC AND PALMER

ENL YARD CREW (3)

ROAD CREW (10) 2-man crews



Continued on next page

2022 FALL MEETING

An Operating Layout

SAFETY IS NO ACCIDENT!

CENTRAL VERMONT RAILWAY, INC.

NORTHERN AND SOUTHERN DIVISIONS

TIME **47** TABLE

Taking Effect at 12:01 a.m. Sunday, April 29, 1956

GOVERNED BY EASTERN STANDARD TIME

CHECK THE DAYS OF THE WEEK WITH CARE

FOR THE INFORMATION AND GOVERNMENT OF EMPLOYEES ONLY

READ SPECIAL RULES AND INSTRUCTIONS CAREFULLY. IMPORTANT CHANGES HAVE BEEN MADE. THE SUPERIOR DIRECTION IS EAST OR SOUTH, AND EASTWARD OR SOUTHWARD TRAINS ARE SUPERIOR TO TRAINS OF THE SAME CLASS IN THE OPPOSITE (INFERIOR) DIRECTION.

DESTROY ALL FORMER TIME TABLES

THE COMPANY'S RULES ARE PRINTED SEPARATELY IN BOOK FORM. EMPLOYEES WHOSE DUTIES ARE PRESCRIBED BY THESE RULES MUST HAVE A COPY OF THEM ACCESSIBLE AND A COPY OF THE CURRENT TIME TABLE, AND SUPPLEMENTS THEREON, IF ANY, WITH THEM WHILE ON DUTY.

P. B. WEISS,
SUPERINTENDENT, SOUTHERN DIV.

J. E. SIMPSON,
SUPERINTENDENT, NORTHERN DIV.

"The Best Way Is The Safe Way"

CENTRAL VERMONT RAILWAY, INC.

NORTHERN AND SOUTHERN DIVISIONS

TIME **45** TABLE

Taking Effect at 12:01 a.m. Sunday, April 24, 1955

GOVERNED BY EASTERN STANDARD TIME

CHECK THE DAYS OF THE WEEK WITH CARE

FOR THE INFORMATION AND GOVERNMENT OF EMPLOYEES ONLY

READ SPECIAL RULES AND INSTRUCTIONS CAREFULLY. IMPORTANT CHANGES HAVE BEEN MADE. THE SUPERIOR DIRECTION IS EAST OR SOUTH, AND EASTWARD OR SOUTHWARD TRAINS ARE SUPERIOR TO TRAINS OF THE SAME CLASS IN THE OPPOSITE (INFERIOR) DIRECTION.

DESTROY ALL FORMER TIME TABLES

THE COMPANY'S RULES ARE PRINTED SEPARATELY IN BOOK FORM. EMPLOYEES WHOSE DUTIES ARE PRESCRIBED BY THESE RULES MUST HAVE A COPY OF THEM ACCESSIBLE AND A COPY OF THE CURRENT TIME TABLE, AND SUPPLEMENTS THEREON, IF ANY, WITH THEM WHILE ON DUTY.

D. M. KERR,
GENERAL MANAGER

J. E. SIMPSON,
SUPERINTENDENT

PALMER SUBDIVISION

edition 21

First Class		Train Order Officers	Miles From New London	<div style="display: flex; justify-content: space-between;"> Northward Superior Direction Southward Superior Direction </div> <div style="text-align: center; margin-top: 5px;">STATIONS</div>	Staging	First Class		Fourth Class			
1	3					2	4	738	430	740	490
Psgr	Psgr					Psgr	Psgr	Freight	Freight	Freight	Freight
Only	Only					Only	Only	Thru/Thru Sat.	Only	Thru/Thru Sat.	Only
AM	PM				AM	PM					
5:40	12:26		0.0	New London (Union Station)		10:08	1:44	PM	PM		AM
6:00	12:26	TO R	4.2	East New London	YARD	10:02	1:38	12:15	1:05		1:20
6:11	12:27		5.0	Montville		9:52	1:28	12:00	1:00		5:45
6:24	12:29	TO	13.2	Norwich		9:40	1:16	11:47	1:01		1:11
6:34	1:19		16.9	Yankee		9:32	1:08	11:44	1:08		4:06
6:44	1:20		22.9	Lebanon		9:24	1:00	11:26	2:15		4:08
6:56	1:32	TO	24.6	Williamstown	YARD	9:14	1:30	11:06	2:40		4:00
7:08	1:40		34.8	South Coventry		9:07	1:43	10:27	2:38		3:38
7:15	1:51		38.3	Mansfield		8:58	1:34	10:11	2:28		3:55
7:25	2:01		44.0	West Willington		8:49	1:25	9:49	2:15		3:15
7:34	2:11	TO	49.8	Stafford		8:41	1:17	8:49	2:12		3:42
7:42	2:18		56.0	State Line		8:39	1:15	8:47	2:10		3:10
7:49	2:25		61.0	Monson		8:30	1:06	8:30	2:08		3:08
7:57	2:33	TO R	65.0	Palmer	YARD	8:22	1:04	7:59	1:45	2:29	2:05
AM	PM		141.0	Brattleboro	YARD	AM	PM	AM	1:00 PM	2:24 PM	2:00 AM
1	3					2	4	738	430	740	490

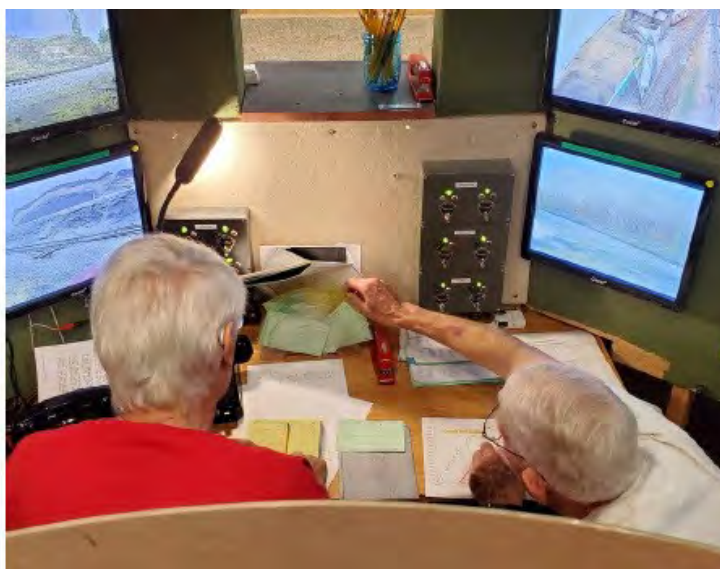
12

Continued on next page

2022 FALL MEETING

An Operating Layout

16 Fast
Clocks
RUN 2:1
TIME



Continued on next page

2022 FALL MEETING

An Operating Layout



And when you need an outlet



Modifying the Roma Convention Car



The Roma Wine Company car, CDLX 297, was the 2022 PCR Convention car. It was an easy to assemble kit from Accurail in HO scale and included optional decal to apply "2022 PCR Convention" as well as renumbering decals. Of course, for some model railroaders, this is only the starting point. Dave Turner is one of those modelers. The following information is from his presentation on upgrading the model to bring it closer to the original prototype.

Background

PFE R30-5 as built in 1909-11 as 7101-10121, later 80000-80100. After sale to CDLX in 1933, Roma Tank car No. 297 with redwood tanks replacing the ice bunkers, is shown being loaded by fill hoses. AAR car type was changed to TW.



CDLX 297 was re-sold in the 1940s to Diamond Match Co in Butte County for use as a caboose and supply car. Later, it was set off its trucks as a storage shed. It was photographed in the late 1980s.



No. 297 was one of several retired refrigerator cars purchased from F.L. Botsford. (Stanley Borden)

Continued on next page

Modified Roma Car



Clover House Dry Transfers

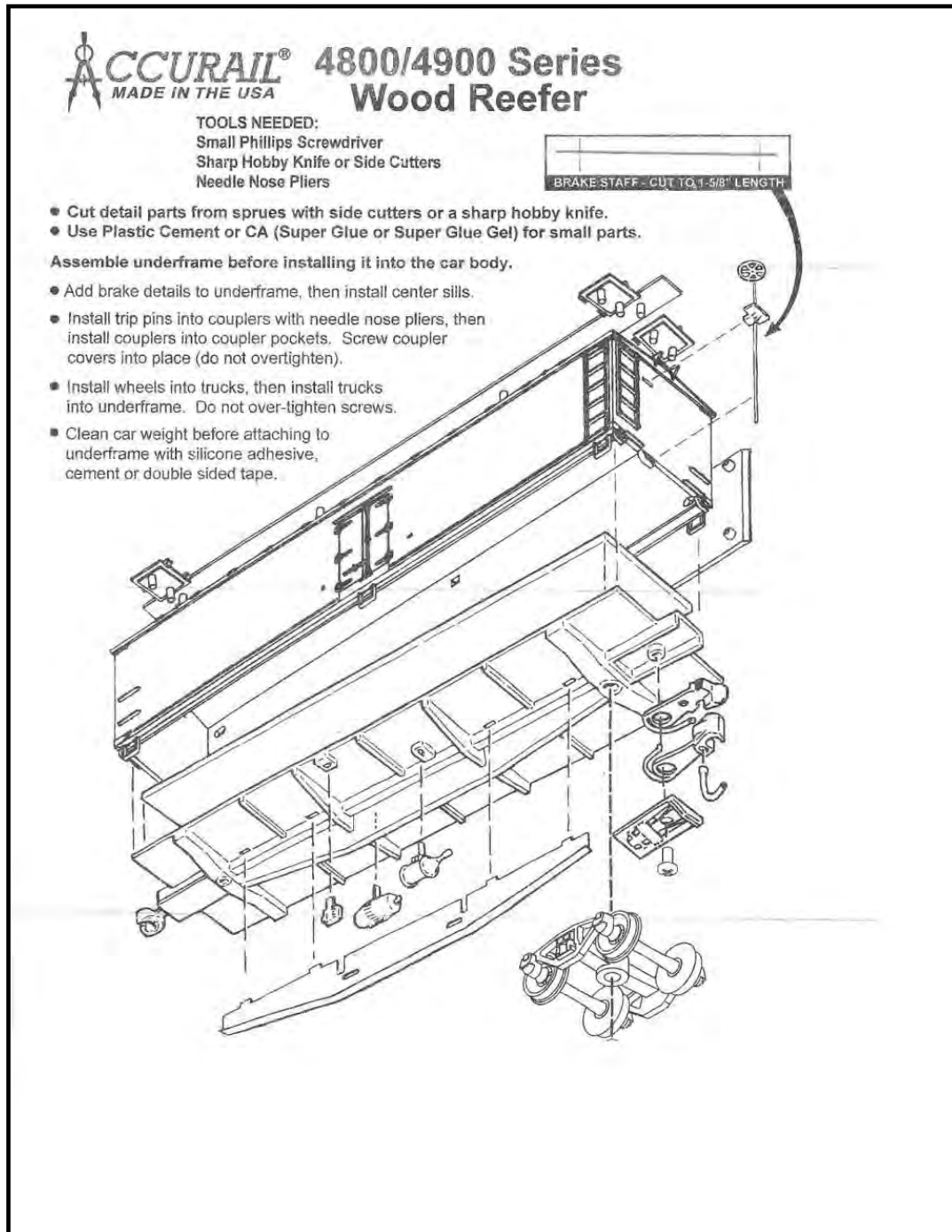
An undecorated Accurail refrigerator car was used by spray painting and dry transfer lettering to make a sample of a proposed convention car. When approved, it was the prototype for the production run by Accurail.



Continued on next page

Modified Roma Car

Accurail's Instruction sheet shows the parts of a stock kit



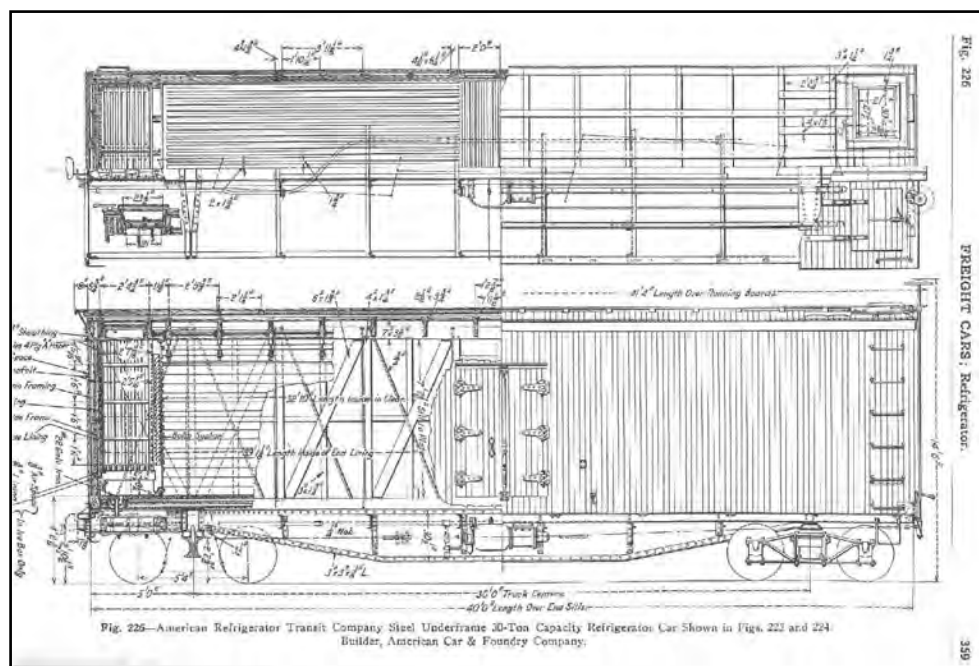
Continued on next page

Modified Roma Car

This mark up of the prototype photo shows the parts that will be modified, straight center sill, type KC brake cylinder and rigging, B end brake wheel, mechanism, rod, and fulcrum, roof ice hatch replacement, lateral roof walk, and grab iron. Since the goal was the Roma car in 1930s condition, 1940s weathering was not duplicated.



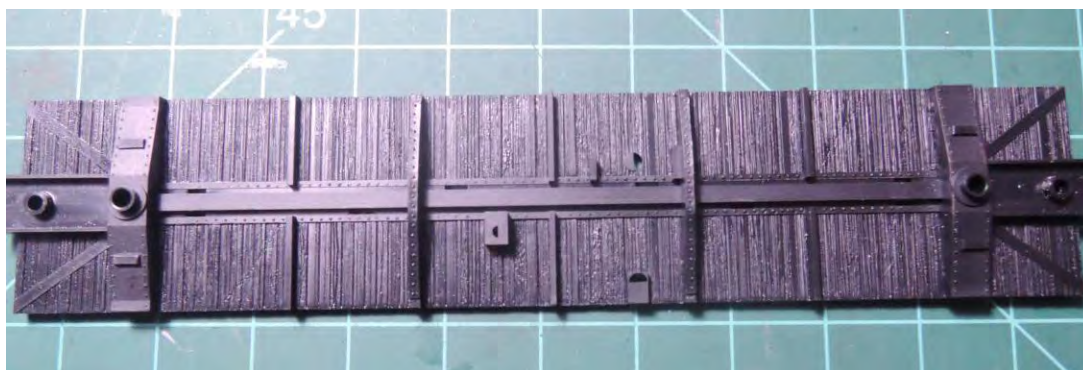
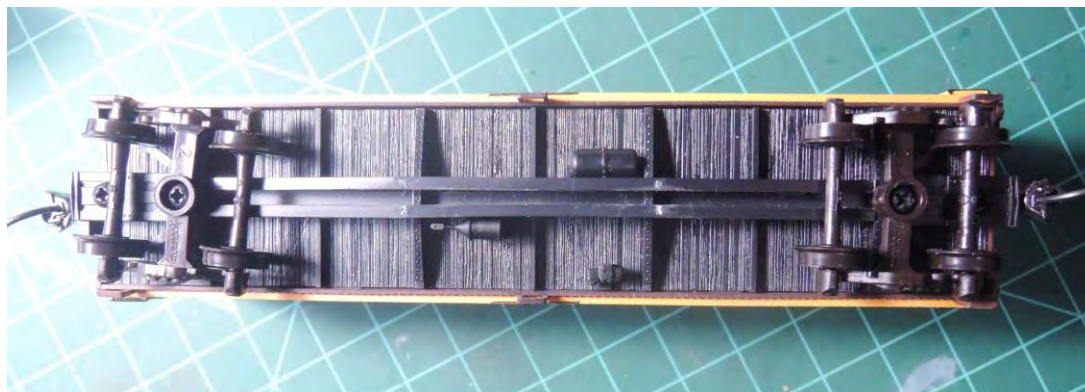
Brake rigging followed this drawing from 1919 Car Builders Dictionary



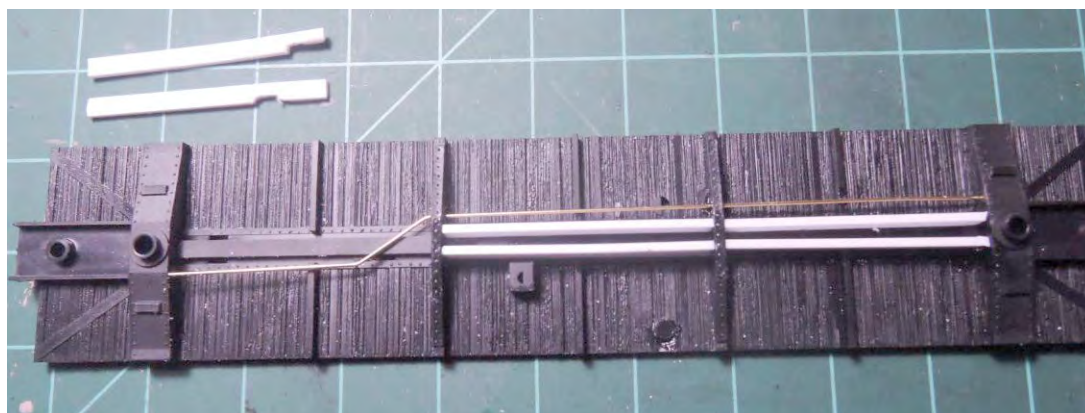
Continued on next page

Modified Roma Car

Stock kit underframe



First attempt at modified underframe with .040 x .100 styrene and .019 brass wire train line. Then, corrected center sill, train line and brake cylinder after changing drawing from looking down view. Used Tichy#3005 Type KC Brake Gear.

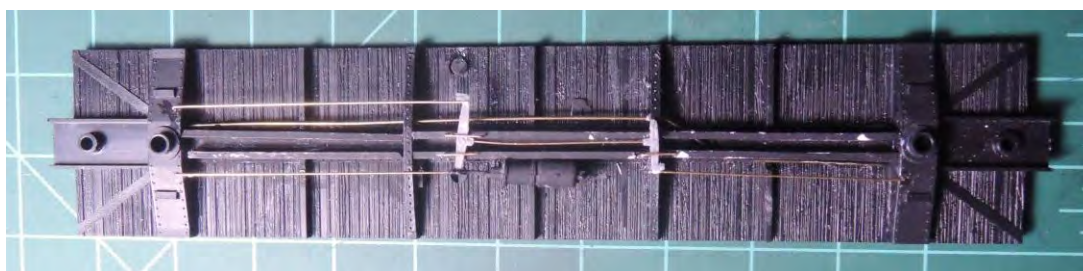
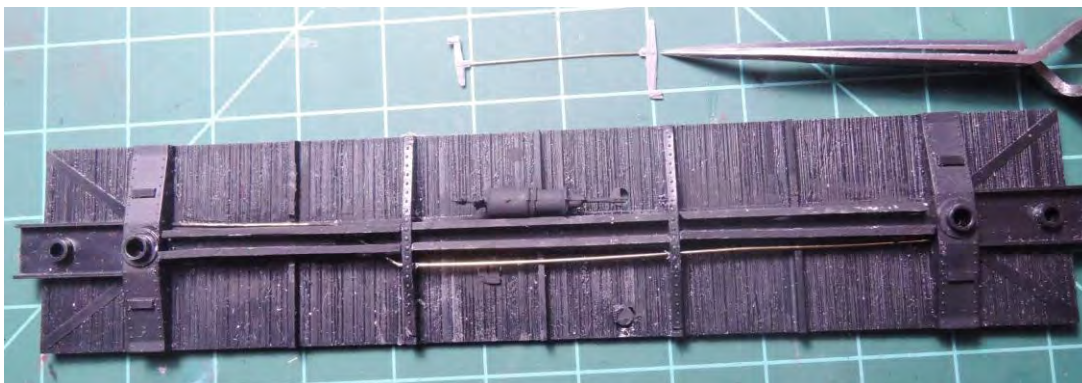


Continued on next page

Modified Roma Car



Scratch building the brake rodding with .012 brass wire and Tichy levers. Completed brake rodding.



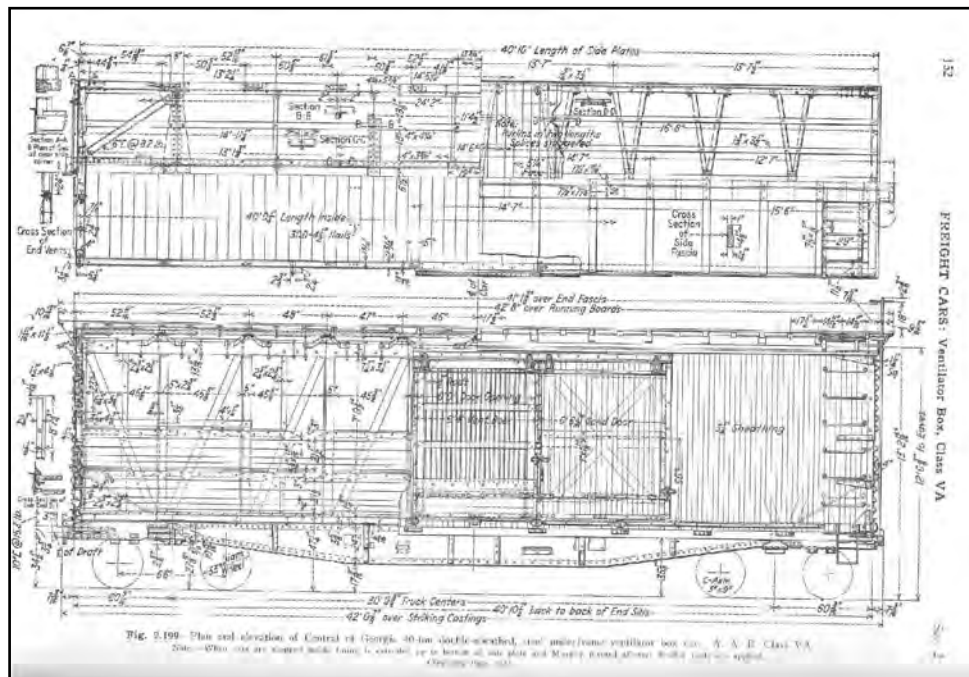
Continued on next page

Modified Roma Car

Removing the ice hatches and carving off unwanted details.



Drawing reference for roof walk lateral scratch building, 1943 Car Builders Cyc.



Continued on next page

Modified Roma Car

Off side ice hatch cover replacement. Scratch built roof walk laterals.



First coat of touch up paint.



Continued on next page

Modified Roma Car

Brake wheel mechanism, and removal of unwanted brake wheel staff chain winder.



Continued on next page

Modified Roma Car

Add the brake wheel fulcrum to finish the B end. Also, add the roof walk lateral corner grab irons.



Completed!



Redwood Empire Division Facebook Page

Please check out the RED Facebook page. The latest additions are outstanding photos taken by Ed Merrin of Ron Kaiser's Western Pacific layout. Ed's use of photo stacking with his smartphone yields almost lifelike images. For more information about the RED Facebook Page, please contact Bill Kaufman (bill@statebelt.org).



[Redwood Empire Division Facebook Page](#)



A few pictures from Ed Merrin's latest post to the RED Facebook page.

Continued on next page

Redwood Empire Division Facebook Page

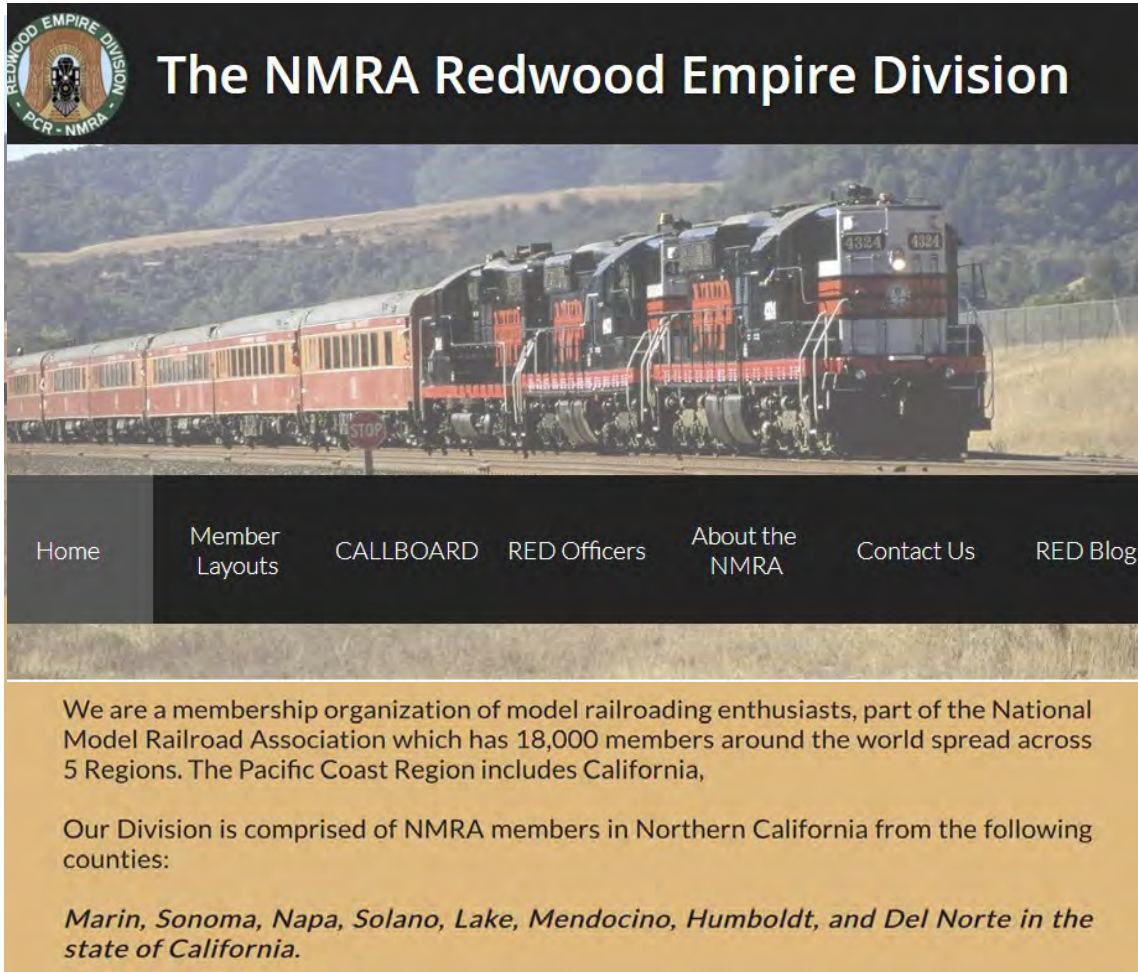
A few pictures from Ed Merrin's latest post to the RED Facebook page.



[Redwood Empire Division Facebook Page](https://www.facebook.com/redwoodempiredivision)

Redwood Empire Division Website

[Redwood Empire Division Website](https://www.nmra-red.org/)



The NMRA Redwood Empire Division

Home Member Layouts CALLBOARD RED Officers About the NMRA Contact Us RED Blog

We are a membership organization of model railroading enthusiasts, part of the National Model Railroad Association which has 18,000 members around the world spread across 5 Regions. The Pacific Coast Region includes California,

Our Division is comprised of NMRA members in Northern California from the following counties:

Marin, Sonoma, Napa, Solano, Lake, Mendocino, Humboldt, and Del Norte in the state of California.

Webpage Contents

- List of RED clubs, member's layouts, and nearby attractions
- Access to past issues of the Callboard
- RED Officers and Staff
- About the NMRA
- Contact Us [Redwood Empire Division Website](https://www.nmra-red.org/)

[Get Past Callboard Issues Here!](https://www.nmra-red.org/)

Clubs in the RED

Please check the club's websites for information on holiday activities.
Please observe club's COVID protocols.

Coastal Valley Lines Modular Railroad

The Coastal Valley Lines Model Railroad Club of Sonoma County, LTD (CVL) is an association of novice-to-expert model railroaders from around the Sonoma County, California area. We operate our HO modular railroad at public and private events and gather for clinics, work sessions, and regular monthly meetings. Visit the website for additional information. [Coastal Valley Lines Modular Railroad](#)

Eel River Valley Model Railroaders

It is the purpose of the Eel River Valley Model Railroaders to preserve the rich history of the Northwestern Pacific Railroad and the history of the North Coast of California. The club has a series of modules depicting several areas of the Northwestern Pacific Railroad between Schellville and Eureka, California. Our goal is to

The Humboldt Bay and Eureka Model Railroad Club

The Humboldt Bay and Eureka Model Railroad Club is the largest, most active model railroad club in Humboldt County. It has existed in the same location for about 40 years. The large layout is freelanced but with many scenes based on NWP locations. The club typically meets each Saturday at 7:30 pm. Visitors are welcome. Open house occurs during Veteran's Day and Rhododendron Days Weekends. The club is located at 7th and A Streets in Eureka, CA.

[The Humboldt Bay and Eureka Model Railroad Club](#)

Mendocino Coast Model Railroad and Navigation Company

See logging history brought to life at this walk-around large G-Scale layout representing a history of logging and the railroads located in the Redwood Empire. Over 1300ft of track - equivalent to 6 miles - with views of a mill, logging camp, town, pier, bridges, and trestles.

Hours: 10:30 - 2:30 pm: every day except Tuesdays and Thursdays.

[Mendocino Coast Model Railroad and Navigation Company](#)

North Coast Historical Model Railroad Society (NCHMRS)

The club operates an HO scale layout based on the Northwestern Pacific Railroad as it ran in the 1950s through Sonoma County to Ukiah. The club is building the layout as a display for the Depot Museum and will be located in the historic Healdsburg Freight Depot. Stop by on the 3rd Saturday of each month as we open the doors to the depot. [North Coast Historical Model Railroad Society](#)

Redwood Empire Live Steamers Interactive Museum

The Redwood Empire Live Steamers is a non-profit organization dedicated to preserving Sonoma County's Railroad history through re-creation, railroad equipment, and historic landmarks in miniature.

[Redwood Empire Live Steamers Interactive Museum](#)

Continued on next page.

Clubs in the RED

Please check the club's websites for information on holiday activities.
Please observe club's COVID protocols.

The Redwood Empire Garden Railway Society

The REGRS is a loosely knit club of garden railroad enthusiasts from areas north of the famous San Francisco Golden Gate Bridge who share an interest in model trains. Our members are primarily located in Sonoma County and Marin County. Contact the club for public tours and shows.

[The Redwood Empire Model Railway Society](#)

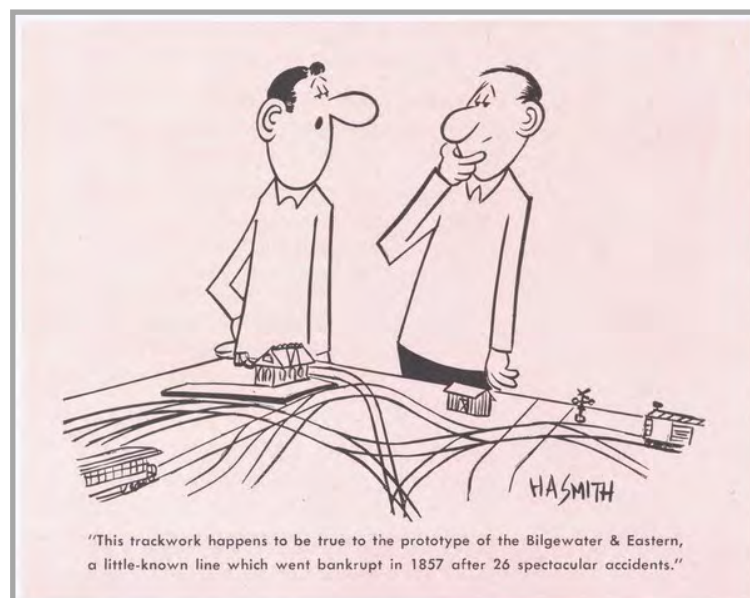
Dud Peter's Estate Sale

As you may know, RED member Dudley "Dud" Peters passed away last year. His wife is offering he following models for sale to members of the RED. If you are interested in purchasing a model or models please contact Dave Grundman at dave_pat_1999@yahoo.com or 707-584-1964.

Category	box?	Description	Metal whls	Kad coup	Manufacturer	Product number	Cost	ASK
boxcar 40'	b	SCL # 624185	y	one	steel	Accurail	3406	\$ 13.99 \$ 7.00
	b	NYC #174231	y		steel	Athearn R to R	73458	\$ 14.00 \$ 6.00
	b	NWP # 1952	y	y	wood	Roundhouse	85216	\$ 10.00 \$ 7.00
	b	New Haven 36409	y	y	steel	Branchline	801122	\$ 20.00 \$ 9.00
	b	SP Overnight #9127	y		wood			\$ 15.00 \$ 7.00
		NP double plug door #8434	y		steel	Athearn	in roundhouse box	\$ 14.00 \$ 5.00
	b	Pennsylvania Plug door #19217	y	y	steel	Accurail		\$ 13.99 \$ 7.00
boxcar 50'	b	C&O 319731	y		steel		Partly built	\$ 20.00 \$ 5.00
	b	GT 8' door #309350	y	y	steel	Branchline		\$ 9.95 \$ 7.00
	b	FMC SP railbox #18970	y	y	steel	Roundhouse		\$ 15.99 \$ 7.00
	b	Warwick RR Railbox #5236	y	y	steel			\$ 20.00 \$ 7.00
Caboose	b	B&O Chessie System bay #903010	y	y	steel	Athearn	BevBel	\$ 24.00 \$ 10.00
	b	Rock Island #171891	y	y	steel	Walthers Platinum		\$ 12.50 \$ 9.00
Center Flow	b	BNSF #430394	y	y		Athearn	73846	\$ 19.00 \$ 10.00
	b	Cape Cod Model RR Club 25th Anniv #1993	y	y		Athearn	2080	\$ 19.00 \$ 10.00
	b	Cape Cod Model RR Club 25th Anniv #1968		y		Athearn		\$ 19.00 \$ 10.00
	b	GN Grain #171798	y	y		Accurail		\$ 20.50 \$ 10.00
	b	Welch Grain #30478	y	y		Athearn		\$ 20.50 \$ 10.00
Covered Hopper	b	NP 3-B #76844	y	y		Proto 2000	21861	\$ 24.95 \$ 10.00
	b	Elder Grain #346	y	y		Accurail		\$ 20.50 \$ 10.00
Triple hopper	b	SP #4379				Accurail	7540	\$ 15.99 \$ 10.00
Quad Hopper	b	CSX #141948	y	y		Bachmann	1761	\$ 12.75 \$ 5.00
		CSX #141948	y	y		Bachmann	1761	\$ 12.75 \$ 5.00
Flat Car 50'		AT&Sf w logs #93302	y	y		Athearn	1400	\$ 22.75 \$ 8.00
Passenger	b	B&O coach #3009 lighted	y	y		Athearn	1859	\$ 49.00 \$ 20.00
	b	B&O RPO #213 lighted	y	y		Athearn	1845	\$ 49.00 \$ 20.00
	b	B&O dinner #1036 lighted	y	y		Athearn	1895	\$ 49.00 \$ 20.00
	b	Norfolk & Western train set The Cavalier				Bachmann Spectrum	D1314	\$ 270.99 \$ 175.00
		coach #16456						
		rpo #1510						
		observation #1301						
		4-8-4 Loco w/DCC						
Reefer 40'	b	Burlington Express #74215		y	steel	Accurail	Track Cleaner Car	\$ 35.00 \$ 35.00
	b	Needham Packing Co. #66405	y		steel	Athearn RTR	71351	\$ 11.99 \$ 6.00
	b	PFE class R 40-23 #46868	y	y	steel	Intermountain	40501-46	\$ 24.95 \$ 10.00
Tank car	b	DuPont single dome SHPX #3246				Athearn	1553-1	\$ 25.60 \$ 10.00

Dud Peter's Estate Sale

Category	box?	Description	Metal whls	Kad coup	Manufacturer	Product number	Cost	ASK
Locomotives	b	B&O Baldwin Modern 4-4-0 #1400	y	y	Spectrum	80106 DCC	\$ 150.00	\$ 100.00
	b	B&O Chessie SD 40-2 #7609	y	y	Athearn	95177 DCC	\$ 198.00	\$ 150.00
	b	B&O Chessie SD 40-2 #7616	y	y	Athearn	95179 DCC	\$ 198.00	\$ 150.00
	b	B&O Chessie SD 9 #1839	y	y	Proto 2000	920-41602 DCC	\$ 180.00	\$ 130.00
	b	B&O SW9/1200 #6309 relettered for B&O	y	y	Proto 2000	920-41401 DCC	\$ 260.00	\$ 175.00
	b	B&O Light Pacific 4-6-2 relettered for B&O	y	y	Broadway Limited	1079 DCC	\$ 280.00	\$ 175.00
	b	AT&SF Baldwin 2-8-0 #2523	y	y	Spectrum	11415	\$ 100.00	\$ 80.00
	b	Conrail F7A #1648	y	y	MRC	CB146	\$ 100.00	\$ 80.00
	b	Rock Island E7 Ph1 #634	y	y	Proto 2000	920-40982 DCC	\$ 200.00	\$ 175.00
	b	SP GP40-2 #7548 shell only			Athearn	4764	\$ 22.00	\$ 1.00
DVDs		Dream, plan, build series						
		Cascade Crossing					\$ 10.00	\$ 5.00
		DCC from Start to Finish					\$ 10.00	\$ 5.00
		Realistic Layout Operations					\$ 10.00	\$ 5.00
		Feather River: Union Pacific's Canyon Crossing					\$ 10.00	\$ 5.00
		Union Pacific's Moffat Line					\$ 10.00	\$ 5.00
		Layouts, Modeling Tips & Prototype Railroads					\$ 10.00	\$ 5.00
		Volume 2					\$ 10.00	\$ 5.00
		Volume 3					\$ 10.00	\$ 5.00
		Volume 4					\$ 10.00	\$ 5.00
		Volume 5					\$ 10.00	\$ 5.00
		Volume 6					\$ 10.00	\$ 5.00
		Volume 7					\$ 10.00	\$ 5.00
		Volume 8					\$ 10.00	\$ 5.00
		Volume 9					\$ 10.00	\$ 5.00
		Painting Backdrops					\$ 10.00	\$ 5.00
		Volume 10					\$ 10.00	\$ 5.00
		Expanding Your model Railroad Part 1					\$ 10.00	\$ 5.00
		Layouts, Tips, and Prototypes: Special Edition					\$ 10.00	\$ 5.00
		Expanding Your model Railroad Part II					\$ 10.00	\$ 5.00
		Volume 11					\$ 10.00	\$ 5.00
		Volume 12					\$ 10.00	\$ 5.00
		Volume 14					\$ 10.00	\$ 5.00
		Distinctive Layouts, New Techniques, and Fascinating Prototypes					\$ 10.00	\$ 5.00
		Volume 15					\$ 10.00	\$ 5.00
		Volume 16					\$ 10.00	\$ 5.00
		Volume 18					\$ 10.00	\$ 5.00
		The California Northern					\$ 15.00	\$ 5.00
		Train Play by the CA. State Model RR Museum					\$ 17.00	\$ 5.00



2023 PCR Convention



The 2023 PCR & FRRS/WPRM Convention

Rails by the River

<http://www.pcrnmra.org/conv2023/>

April 26 thru April 30, 2023

Courtyard by Marriott

1782 Tribute Road

Sacramento, CA 95815

Features

- 36 Clinics (to date)
- Layout tours organized by Scott Inman
- Vendor room on Thursday & Friday
- Swap meet room on Saturday
- Extra fare activities
- Separate, secure contest room

Convention wearables by Daylight Sales

Volunteers Needed

- Registration Desk
- Company Store
- Clinic Hosts
- Contest Room
- Contest Judges
- Switching Contest
- Non-Rails Hospitality Room

Convention Registration



2023 NMRA International Convention



Welcome to the 2023 Texas Express

The NMRA International Convention
"Things are always bigger and better in Texas"

August 20 (Sunday) - 26 (Saturday), 2023

Hosted by Divisions 1 & 3 of the Lone Star Region

Convention Location

Gaylord Texan Resort & Convention Center
1501 Gaylord Trail
Grapevine, TX 76051
Phone: (817) 778-1000

Online registration

<https://www.2023texasexpress.com/registration.html>

Printable mail-in registration

[https://www.2023texasexpress.com/forms/
Printable_Registration_Form-v5A.pdf](https://www.2023texasexpress.com/forms/Printable_Registration_Form-v5A.pdf)

HAPPY Holidays



Engine One Christmas, 2019. Decorated and ready for the annual "Christmas at the Railroad Museum" at the Nevada County Narrow Gauge Railroad Museum in Nevada City, CA.

Built in 1889, this narrow gauge (35") Porter 0-4-0 is the oldest operating steam engine locomotive in California.