



# SHORT LINE

Sierra Division \* Pacific Coast Region \* National Model Railroad Association



The  
**World's  
Greatest  
Hobby!**

### Inside This Issue

Gerber Sub Progress	1
Call Board	2
From the Super	2
From the Editor	4
Special Notices	5
Time Table	16
Map(s) for Next Meet	16
NMRA Partnership Program	18
February Meet Report	19
Contest Winners	22
Z Scale References	25
Convention Registration	27
Crew Call	29



S.P. Gerber Sub

1926

## Progress as of January 2018

By Gary Ray

2017 saw the completion of all the track-work including 224 hand-laid switches. As 2018 begins, I plan on finishing all the messy plaster work and basic scenery (red dirt instead of white plaster) and ballast the track. Here is the progress the layout has seen with op sessions resuming in February and NMRA Sierra Division op session in May.



I was so happy to do some cleaning of construction leftovers. I repainted the entire 24'x60' floor with an epoxy paint. The previous latex paint seemed to let some moisture in on the concrete floor. I sorted and consolidated materials. As soon as messy plaster work is complete, carpet squares will go down.

see ""Gerber"" - page 6

## Sierra Division Callboard

PCR business or questions:

### PCR President

Ed Merrin  
edmerrin@comcast.net  
(707) 542 3620

### Director, Sierra Division

Tom Van Horn  
tomvca@aol.com  
(209) 626 0352

Sierra Division business, questions, or  
to volunteer to give a clinic, for mem-  
bership problems,

### Superintendent

Jim Collins  
jimcol@charter.net  
(209) 566-0935

To volunteer your layout for a tour or  
"Timetable" entries:

### Chief Clerk

Chip Meriam  
chipmeriam@comcast.net  
(530) 899 2609

### Paymaster

Al Rowe  
HOFUNAR@aol.com

### SHORT LINE Editor

Chip Meriam  
chipmeriam@comcast.net  
(530) 899-2609

### Contest Chairperson

Gary Ray  
gerber1926@gmail.com  
(530) 990-1276

### Membership Chairperson

RJ Myers  
(775) 772-7531  
rj@a2dreno.com

For Golden Spike or NMRA

AP Certificate questions:

### Achievement Program

Dave Bayless  
(530) 887-8880

### Webmaster

Gus Campagna  
gus@campagna.com  
(707) 664-8466

**SHORT LINE** is published quarterly by the Sierra Division of the Pacific Coast Region of the National Association. Material may be reprinted with permission.

Articles, photos, tips, or ideas are heartily encouraged and will be enthusiastically accepted! The preferred format would be in Rich Text Format (RTF), with photos as JPEGs, but we will accept any format (from a PC or Mac; MS Word, Simple Text, typed, or handwritten). Send it to your editor by regular mail to **SHORT LINE**, 2260 Cherry Glenn Ct., Chico, CA 95926 or by email to :

# From the Superintendent

## Winter?

I am not sure whether to be thankful or annoyed. While it was great that the weather was clear for our February op session with the Sacramento Model RR Historical Society and meeting, we once again are desperately in need of rain here in California. So I'm thankful it was dry for everyone who had to travel, but I think we all could have survived and would have appreciated more of the needed precipitation. Ah well, another strange California winter.



But regardless of the weather, everyone had the usual terrific and fun time at the op session. Ron Fritz (President) and his crew at SMRRHS are always friendly and very helpful and do a great job of assisting and guiding us during the session. And this year, our own Steve Folino did a bang-up job of cooking the burgers. Thanks Steve!

Though the expression of everyone in the photo at left looks more like, "Uh-oh, that's not supposed to happen." Or worse: "Glad that's not my engine on the floor," to the best of my knowledge, there were no accidents or major problems or even incidents during our session. Everything ran well and everyone had a great time. Lots of switching and running and even dispatching (great job, Brian). We all look forward to doing this again next year.



The meeting at the church was also fun and informative. Z scale is not very common for many reasons but Mark Markham's presentation was highly informative and educational. I did not realize there was such a large and growing amount of equipment and support for it but I guess I shouldn't be surprised. Though I don't think it will overtake HO in popularity anytime soon, it is a growing segment of our hobby and a great way to help introduce model railroading to folks since it's much easier to bring a Z-scale display somewhere for show than one of the larger scales. Thanks for a great presentation, Mark.

Next meet will be in Paradise/Magalia on May 12. Gary Ray has a very full day scheduled for us that includes a visit to two different museums; a meeting with lunch at Mountain Mike's pizza which will include a presentation by Gary on Butte County RR and a presentation by Al Wood on the Northern Electric Shops at Mulberry (in Chico); and a tour of Gary's SP Gerber Sub layout. Should be a really fun day. Thank you Gary!

For planning purposes, our August meet will be in Sacramento again, though

see "Super" - page 3



"Super" from page 2

## From the Superintendent, ctd.

the exact location is not currently settled. In the morning, Chip Meriam will lead us in a "Scratch-building Test" where we will be given materials and allowed to demonstrate our creative abilities. Should be enlightening and a lot of fun. The afternoon portion will include a clinic by Klaus Kiel on aviation in railroading. In October we will be in Modesto (activities still being worked out).

I remind everyone that this October is election time. Chip Meriam has agreed to continue as our Clerk (and newsletter editor) and Al Rowe has also agreed to continue as Paymaster. A big thank you to both Chip and Al! However, I will not be continuing as Superintendent so we need someone to please step forward and take the helm, if only for the next two years. I will be happy to help whoever does it; in fact I plan to have at least the first couple of meetings pretty much figured out and scheduled (since that is a large part of the job). I will also work with the convention chair for the 2019 Region Convention.

Speaking of the convention, I am very pleased to report that Scott McAllister has stepped up and taken on the Facilities Chairman job and that Mary Campagna-Moore and Mike O'Dorney (from Coast Division) are both willing to take on the Registration chair. These are both critical jobs so it's terrific that they are filled. We will still need all the other positions – clinics, contests, volunteer coordinator, registration and other people at the convention itself, layouts tours, prototype tours, and other positions. Once the location and date are finalized (which will be very soon), I will be sending out and working with the **committee chairperson (which we still need)** to help fill those spots (and will continue to do so even after October). There will, of course, be an organizing meeting. We have a few other folks who have also volunteered – Greg Wolf, Steve Folino, and Steve Faust. A big thank you to you all! The conventions are an important part of what makes model railroading fun in our region. Please carefully consider stepping up and helping with the convention. Contact me at [jimcol@charter.net](mailto:jimcol@charter.net) if you would like to help.

Looking forward to a very fun and interesting day in May – see you all in Paradise!



**PACKRATT TRAINS & TOYS**

Matt Padgett

546 Kentucky Street - Gridley, CA 95948

530-797-9264      packratt1@gmail.com

Open Wednesday thru Friday 12:00 PM to 6:00 PM and Saturday 11:00 AM to 5:00 PM

# From the Editor

## Because I Can

If you avail yourself of the pleasure of reading the other publication I edit, the PCR *Branch Line*, you will notice that there is considerable print devoted to the memory of three model railroading giants that passed away earlier this year. Namely: Jim Vail, Kermit Paul, and Bill Swindell. These guys were well known in the Pacific Coast Region and made notable contributions to the hobby during their time with us. Our PCR Historian, Dave Connery, did a wonderful job preparing some of the memorial pieces.

I would like to memorialize another fellow that, more than likely, no one ever met. His name was Mike Plymesser. On March 30 he will have been gone for ten years. Perhaps you remember seeing his portrait in my train room when you visited my layout in October 2016. If you don't recall the photo, or you weren't at that meet, here is the picture. It



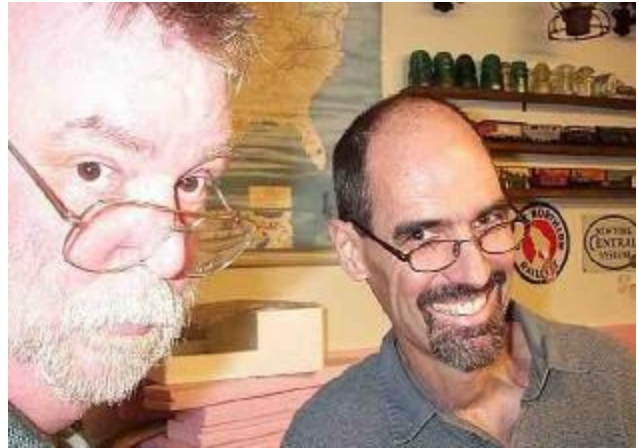
has occupied this spot since 2008.

Mike and I "played with trains" together for thirty seven of his fifty three years. We started back in 1971

when Mike helped me re-wire a large Lionel layout in my parent's basement. We were both in high school at the time. A year later, after my decision to move to HO, I demolished the Lionel layout and boxed up the track, rolling stock, structures, and accessories. Mike was always quick to remind me that he had invested a fair amount of time working on the Lionel layout and to what end? It was all in boxes!

Over the years I built several HO layouts in seven different locations. In one way or another, Mike had a part in the construction and operation of each one. But that's not all. Shortly after the Napa Valley Wine Train began operations, Mike and his wife, Mary, hosted Lorri and me on the train for lunch. In 1994 the Bean Steam excursion train ran from Oakland to Tracy behind restored SP 2472. Once again, Lorri and I were Mike's guests. In early 2002 I rode the New Orleans street cars for the first time and, you guessed it, Mike and I were together for that trip.

Mike frequently threatened to build his own layout some day, and he did dabble briefly in N scale, but for the most part he was quite happy to support me in my modeling efforts and to come "run the trains" several times a year. We had a great time together. My job was always the same: Create a complicated switching list, pour Mike the perfect martini, and watch him operate.



So, because I can, a tip of the glass to you, Mike, I hope you can read this from up there.

At least twice in the pages of this issue, our Division Superintendent, Jim Collins, has reminded us that he will be stepping down, for certain, in October. Furthermore, he has indicated a willingness to offer help to whomever may succeed him. I, for on, will be happy to support and assist the new Super as well.

I call your attention to the "Special Notices" on page 5. Of particular note is the call from Dick Witzens to follow him as the secretary of the International Rail Fair committee.

AND

Walt Schedler is planning another OP session for May 5.

**NOTE: THIS DATE WAS CHANGED FROM THE ORIGINAL CREW CALL.**

The PCR Convention is now only days away. If you haven't already done so, register now. You will find a registration form on page 27.

Happy Reading!

# — SPECIAL NOTICES —

## International Rail Fair Committee Is Seeking A New Secretary

*With great regrets, I would like to retire as IRF Secretary.*

*While I am willing to continue as interim secretary, I am asking each of the IRF Directors to announce this job opening at all meetings of their organizations until the job is filled, hopefully as soon as possible..*

*The job duties consist primarily of sending out meeting reminders, attending about nine meetings a year, taking minutes at the meetings and preparing and emailing them to the committee members. The secretary also maintains and distributes a roster of Committee members. Occasionally there may be a special report or item of correspondence. The secretary also maintains a permanent file of the minutes, reports from other committee members, and other pertinent information.*

*If anyone has questions or would like more information, they should feel free to contact me.*

*Dick Witzens, IRF Secretary*

[witzrr@surewest.net](mailto:witzrr@surewest.net)

---

## Sierra Division Officer Elections Are Coming

Although the Division Director election will have taken place, the elections for the Superintendent, Chief Clerk, and Paymaster will soon be upon us. Nominations may begin at the August 2018 meeting and the voting will take place at the October 2018 meeting.

---

**The Tri-City Society of Model Engineers and the Niles Depot Historical Foundation invite you to our 7<sup>th</sup> Annual Open House June 9<sup>th</sup> & 10<sup>th</sup>.** N & HO scale layouts in operation along with the open Niles Train Depot Museum 10AM TO 5PM Saturday & 10AM to 4PM Sunday. Located at 37592 Niles Blvd in Fremont, CA in the Niles Town Plaza. <http://www.nilesdepot.org> Q:bobcz007@comcast.net

---

## CALL FOR CREW - CREW LIST SECOND OP session of 2018

Colusa Shasta Div., SATURDAY – MAY 5, 2018

**You are invited to “Mark Up” for this OP session.**

**Please RSVP WITH:**

**FIRST: Please indicate by number your response to this invitation:**

1. I will definitely be there.
2. I hope to be there and will let you know later.
3. I can't make this one - Please keep me on the list.
4. I am sorry - I can't make your sessions - Please remove me from the invite list.

**SECOND: Please NOTE YOUR job ASSIGNMENT – first come-first serve. If there is a problem, please let me know.**

**SEE ATTACHMENT** (*see back page of this issue*)

Thanks.

Walt



*"Gerber" from page 1*

I painted the ties and rail for over 1000' of track. Unfortunately, the acrylic paints seemed to not stick when I applied ballast. Perhaps it was the pre-wetting with 90% alcohol that I used to reduce surface tension when ballasting. I will go back and repaint the ties.



The workshop area was cleaned up but soon was over-whelmed again.



Eight phone handsets were painted and wiring run for phone system.



I Also ran wiring for fast clocks and installed 3 video cameras to monitor staging areas.

I replaced CFL's with 168 sixty watt LED's. I'm really happy with the correct white balance.



*see ""Gerber" - page 7*

*"Gerber" from page 6*



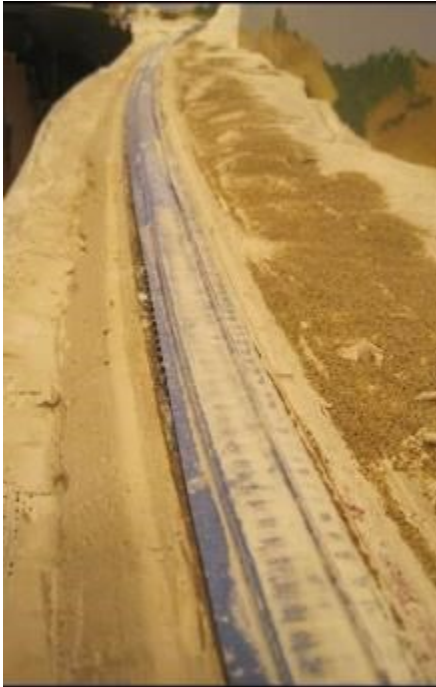
I was to have an Open House in Sept., but had to postpone as I was out of town. I had put heavy paper down in all the scenery voids to keep equipment from falling to the floor. Since I had to postpone, I'm getting all basic scenery done. Here I used foam to form initial ballast slope, covered it with plaster cloth, and made a shaping tool based on the prototype. Fixall® and plaster of Paris mix was then shaped, although I've found other methods that were easier.



This area is between Cottonwood and Anderson. Previous articles include a layout map. *(Editor's Note: See October 2015 Short Line.)*

*see ""Gerber" - page 8*





Dirt here is zip texturing. Other places I used real dirt. Most will get covered with golden yellow static grass that California has in the early summer. The picture at lower right is getting ready to ballast in Cottonwood. Tape is pulled up before applying alcohol and then 3/1 glue mix. This gives neat shoulders where wanted. Lower left shows Cottonwood after ballasting. After looking at a 1929 SP video, I've decided that the light colored main line ballast needs to be extended over to each siding. Unballasted track will be dirt. I'm still experimenting with the best way to fasten dirt down as ballast and ground cover. Any suggestions would be greatly appreciated.





Ballasted line between Proberta and Red Bluff.



Ballasted bridge west of Anderson. Anderson Cemetery has a start with this paper model from my friend, Klaus Keil.



At left is a beginning of what will be a ranch scene. The scratch-built tank house is common on northern California ranches. The Sierra Division is encouraging members to develop completely a 2 square foot scene and then share a photo. This is more like 6 square feet that I hope to finish before this newsletter comes out. Building a few structures is helping take the tedium out of getting basic scenery done on the 550' main line.

At right, ballast samples were made to get the right color. Behind is a gravel pit that will be located at Bella Vista – a branch line out of Anderson. This non-prototype industry was added to increase operating interest in this area.





Experimenting with real dirt. The sample at the left will get sandpapered down when dry.



Anderson is ballasted and mainline ballast extended to sidings. I found that brushing piled up ballast off center of track and then using finger to shape past ties worked better than trying to use template



Past Anderson is a culvert. Sand was used to get the slope. Some ballast went down way too far and will be covered with more dirt, rocks, and vegetation.



The "Atelier Spray Bottle" has the finest mist I've seen and does not disturb ballast when spraying alcohol. I purchased on Amazon for \$12 - Well worth it!





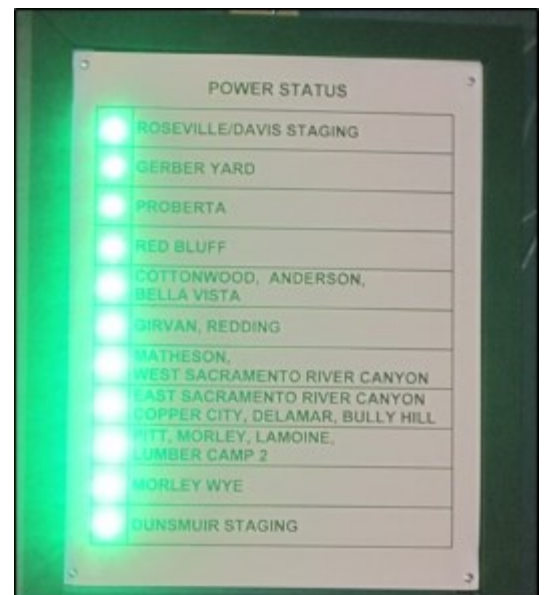
*"Gerber" from page 10*



While the layout has been shut down, friends helped tune up over 250 cars – turned journal boxes, checked coupler height, adjusted trucks and weighed cars and then placed them in Gerber until the layout is ready for an op session.



This is the spiral that climbs to the upper level through the Sacramento River canyon. The ballast is down. Now for lots of vegetation, rocks, and water.



Phill Simpson made this Power Status board that can be seen from the dispatcher's desk. A buzzer sounds and light goes out if any one of the 11 districts has a short.

*see ""Gerber" - page 12*



I cast portals for 5 tunnels along with retaining walls. This is the entrance of a tunnel that is hidden under a hill at the end of the turn-back curve behind me. I'll be so glad the get finished with the plastering!!!



The track comes out at Pitt where a branch line goes to Copper City, Delamar, and Bully Hill mines.



This picture shows Pitt on left, Sacramento River at the lower right, and Delamar at the upper right.



*"Gerber" from page 12*



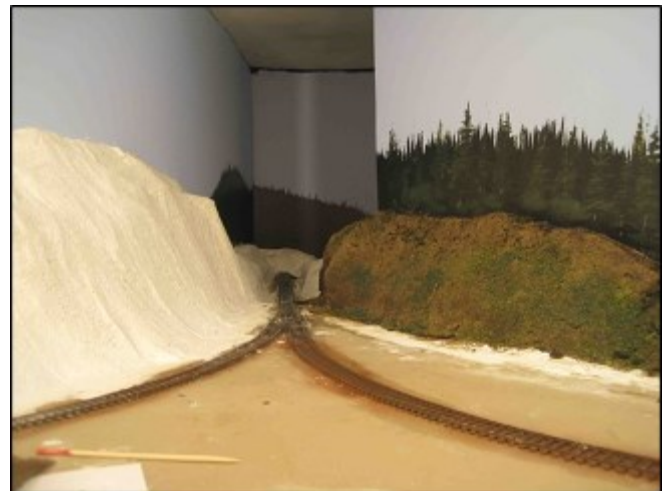
Steps up to the upper mushroom part of layout.



The beginning of mountain construction at Pitt



Basic mountain scenery of the mountains at Pitt. Real dirt was used here. I found very fine dust at the Cal State Chico University farm where tractors had pulverized it. Other dirt I use gets pulverized in a blender from the thrift store - same with mixing ZIP texturing.



The wye at Morley.



Construction of the Bully Hill mining area. Above is the exit from the tunnel and is as far as I have finished the branch line scenery. This is the last major area other than logging branch line over dispatcher's desk.

A cheap source of high quality medical plaster gauze can be found on EBay – search "tarheeltextilesales."





Tunnel entrance between Morley and LaMoine



Exit from tunnel between Morley and LaMoine



Tunnel entrance to Dunsmuir staging past LaMoine



I'm currently working on ballasting this area at the far end of the lower level. Proberta is on left and Girvan is on right.

More about the layout can be found using these links:

<https://www.dropbox.com/s/698x6odxzfnzvzx/Gerber%20Sub%20~%201926%20small.pdf?dl=0>

<https://www.dropbox.com/s/007r4tkraiwi106/Gerber%20Sub%20Construction%20small.pdf?dl=0>

Thanks for looking !



# SIERRA DIVISION

Next Meeting: May 12  
Paradise / Magalia

9:30 AM Paradise Depot Museum  
5570 Black Olive Dr. - Paradise

10:30 AM Meeting, Contests, Lunch  
Mountain Mike's  
6626 Clark Road - Paradise

2:00 PM Tour and OP Session  
Gerber Sub  
6601 Ray Family Lane - Magalia

SEE MAPS BELOW



# TIMETABLE

April 4 - 8  
PCR Convention  
Rohnert Park

May 12  
Paradise, Magalia

August 11  
Sacramento

October 13  
Modesto

## May Contest Categories:

*Modeling: Steam Locos*

*Photo: (rains in Action*

*(limit of 3 photos - at least 5 X 7 but not over 8 X 12)*

*Railroad Arts & Crafts*

# SHORT LINE

Dec. 10 for the Jan. issue

Mar. 10 for the April Issue

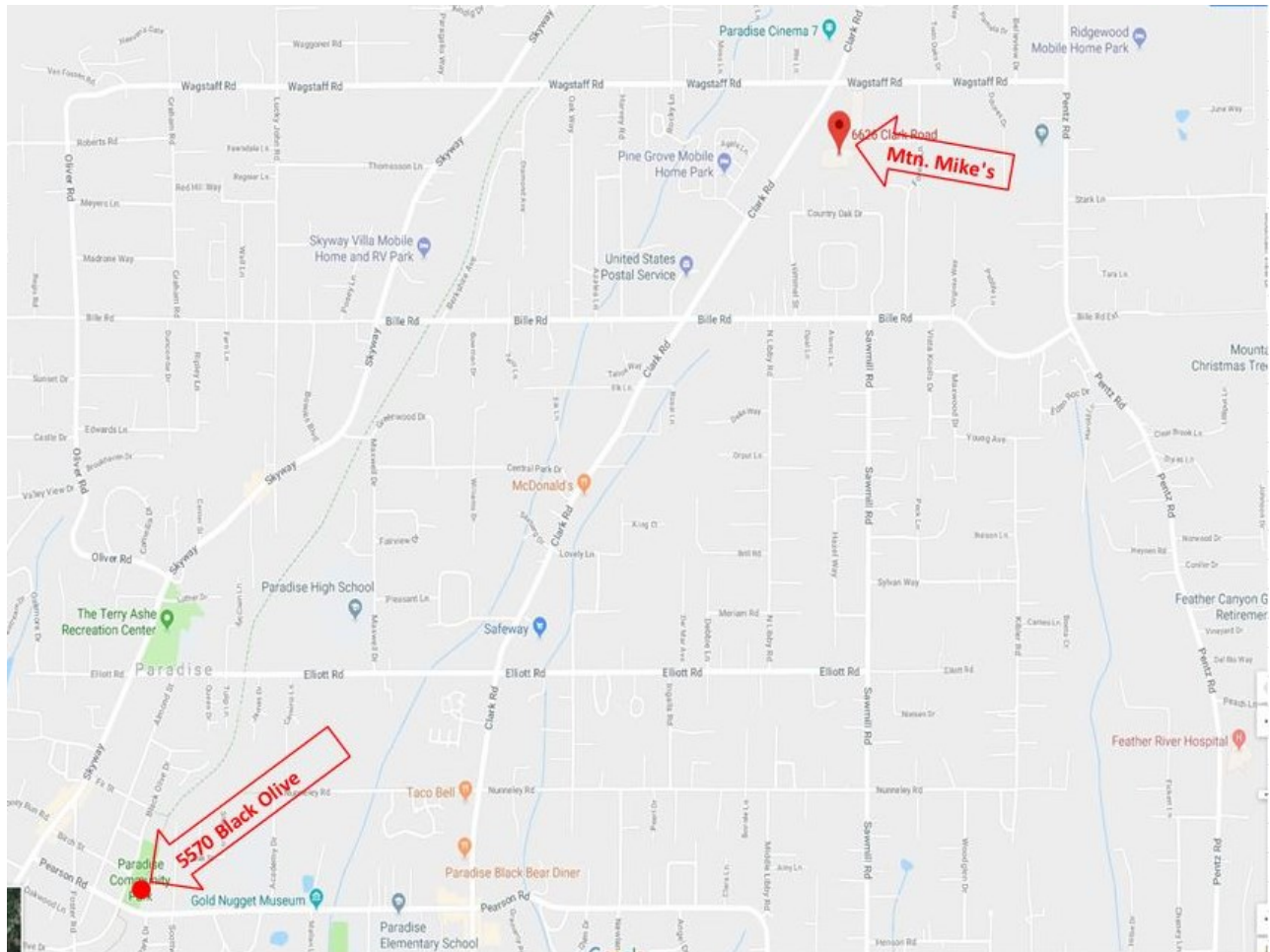
June 10 for the July Issue

Sept 10 for the Oct. Issue



APRIL 4 - 8, 2018

See registration form on page 27







We'll plan to caravan to Gary's layout. He is, to say the least, well hidden!



Gerber Sub ~ 1926

Gary Ray

Gerber to La Moine c. 1926

<http://www.pcrnmra.org/sierra/October-2015-digital.pdf>

<http://www.pcrnmra.org/sierra/January-2017-Web.pdf>



NATIONAL MODEL RAILROAD ASSOCIATION, INC.

**Wow! Did you know there's a new  
NMRA Member Benefit?**

**It's the NMRA Partner Program!**

**Model railroad manufacturers are partnering with the NMRA to offer discounts to NMRA members.**

**Current members log in to [www.nmra.org](http://www.nmra.org) . At the Members Menu, go to the NMRA Partnership Page to see who's on the list, discounts offered, and how to order. New Partners are coming on board every month, so check back often.**

**If you're not yet a member, here's another great reason to join and get more fun from your hobby with a membership in the world's largest model railroad organization.**

**[www.nmra.org](http://www.nmra.org)**

**A proud  
Partner with**





# February Meet - Sacramento, CA

By Jim Collins

## SACRAMENTO MODEL RAILROAD HISTORICAL SOCIETY OP SESSION



The Sierra Division held its winter meet, on February 12, 2018. The meet was split between two locations. In the morning we met at the Sacramento Model Railroad Historical Society (SMRHS) for an operating session and then, after lunch, convened at The First Christian Church on Folsom Blvd in Sacramento. We had 16 people for the operating session and 27 at the meeting.

The SMRHS has both an HO-scale layout (modeled on the Southern Pacific and Western Pacific railroads between Oakland and Keddie, CA) and an HO<sub>n</sub>3 layout (which models a mix of western and CA narrow gauge prototypes). We had members who enjoyed operation on both lay-

outs. On the HO layout, all Sierra Division members that wanted a chance to operate were assigned to various

yards or trains along with an SMRHS member to guide and help them. Members were given trains to operate and run but there was no set switching on the narrow-gauge layout this time. Everyone said it was a great time and we all learned a lot as the trains are run prototypically with signals (mostly but not quite all completely installed) and phone communications with the dispatcher.



Andrew King at Oroville



A Busy Day at 12th Street Yard

This has become an annual tradition for the division to meet and work with the terrific members of SMRHS and operate on their layout. We look forward to continuing the tradition with the good folks at SMRHS for many years to come.



Dick Witzens Peering Up "The Canyon"

*"Continued on Page 20"*



# February Meet (ct'd.)

## SACRAMENTO MODEL RAILROAD HISTORICAL SOCIETY OF SESSION



Joan Giacomelli in the Narrow Gauge Room



Walt Schedler, Dave Hilmes & Ed Powell  
Checking the MR News in the Crew Lounge



Chip & Lorri Meriam  
With Table Mountain in the Background

As in previous years, around noon operations wound down and we all enjoyed a delicious barbeque lunch of hamburgers with chips and sodas that were provided by SMRHS (for a small fee) and cooked by our own Steve Folino.



Birds-Eye View of the Keddie Wye

*"Continued on Page 21"*



# February Meet (ct'd.)

## SIERRA DIVISION MEETING



**PCR President, Ed Merrin  
On Elections and Conventions**

After lunch we moved to the First Christian Church where a brief business meeting was held first. After the usual minutes and paymaster's report were handled, our Pacific Coast Region President, Ed Merrin, spoke about the current Division Directors election in progress and the upcoming regional convention in Rohnert Park. He also noted the need to establish a convention committee and select a venue for the 2019 PCR convention, which is Sierra Division's responsibility.

Jim Dieckman then provided a summary report on the 2017 International Railfair. The two-day November event saw 1,434 paid attendees with 95 family passes sold. A small number took advantage of the opportunity to attend a second day for free, having paid for entry the previous day. Jim noted that the parking issues, due to the extensive remodel activity, should be resolved before the next Rail Fair in November 2018.

Mary Moore-Campagna, volunteer coordinator for Rail Fair, extended her thanks to the many volunteers throughout the division who helped make the event successful. Superintendent Collins reminded the group that a Rail Fair volunteer coordinator was needed for the 2018 event, and that the election of Sierra Division Officers was not that far off. Furthermore, Jim noted he would not be available to serve as Superintendent once his term ends in October 2018.

Gary Ray gave a short report on the events planned for the May 2018 meet to be held in Paradise and Magalia. Gary is arranging for a tour of the Paradise Railroad Depot/Museum (<http://www.goldnuggetmuseum.com/venue/depot-museum>) followed by the meeting and lunch at Mountain Mike's Pizza. After lunch, Gary's layout, The Gerber Sub, will be open and operating at his home in Magalia. A tour of nearby Stirling City, an historical lumber mill site, will also be available (<http://stirlingcityhistory.org/>).

Division Director, Tom Van Horn, reported on PCR activities and asked for a show of hands from those planning to attend the convention in April. Tom reminded the group of the NMRA Partnership Program that involves participating vendors



**Gary Ray With a Preview  
Of May 2018 Meet Plans**

*"Continued on Page 22"*

# February Meet (ct'd.)

## SIERRA DIVISION MEETING

offering discounts to NMRA members. Tom also noted the large list of clinic videos available on the NMRA website. The next PCR Board meeting will be in conjunction with the convention in April and all members are welcome to attend. Finally, Tom reminded the members that the Division Director election was currently being conducted online. Following Tom's report, the members took fifteen minutes to examine and vote for contest entries in the photo and modeling categories.

The featured clinic was presented by long-time Z scale modeler, Mark Markham on the history, development, and currently available products in Z scale. Mark's presentation included an informative handout which will be reproduced on pages 25 & 26 of this issue (following contest winners).

After Mark's clinic, the results of the model and photography contests were announced. The model contest was for diesels. First place was awarded to Walt Schedler, second place went to Dan Mahoney, and there was a third place tie between a joint entry by John and Perry Hunt, and an entry by Dan Mahoney. For the photo contest, Modeled Scenes, first place went to Chip Meriam, second place went to Walt Schedler, and there was a third place tie between Steve Harvath and Dan Mahoney.

As always, the meeting ended with a raffle for various door prizes. The next meeting is scheduled for May 12, 2018 in Paradise, CA.



Mark Markham - The Z Scale Guy

## CONTEST WINNERS



First Place  
Walt Schedler

*"Continued on Page 23"*

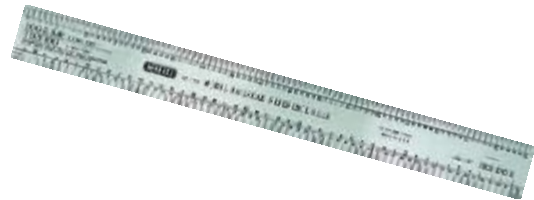


# February Meet (ct'd.)

## CONTEST WINNERS



Second Place  
Dan Mahoney



Third Place Tie



Dan Mahoney



John & Perry Hunt

*"Continued on Page 24"*

# February Meet (ct'd.)

## CONTEST WINNERS



First Place  
Chip Meriam



Second Place  
Walt Schedler



Third Place Tie



Steve Harvath



Dan Mahoney



# 21<sup>st</sup> Century Z References

## Further Reading

Goehman, Bruce "Western Pacific in Z", Model Railroader, series starting February 1986

Gartrell, Charles F, "From N to Z", Model Railroader, September 1988 p107-108

Kennett, David "A layout your can take with you", Model Railroader, November 1999 p 112-113

Schultz, Jake "Z Scale in a Briefcase", Model Railroader, April 2004 p 78-80

Dolkos, Paul J. "Conquering the Alps in Z Scale" Model Railroader, December 2007 p 60-65

Sargent, Vern "Z Scale in a Closet" Model Railroader, November 2017 p 50-54

Märklin "Gleisanlagen-Buch" ["Layout Book"] Märklin 2009

Multilingual description, examples and sample layouts for Märklin track and accessories.

O'Connor, Riley "Greenberg's model railroading with Märklin Z". Greenberg Publishing 1990

The title sums it up. Available with some updates online at: <http://www.guidetozscale.com/index.html>

Ztrack Magazine. Bimonthly print and electronic publication. New product announcements, how-to.

<http://ztrack.com/>

## On Line

AZL Forum	<a href="http://www.azlforum.com">http://www.azlforum.com</a>	Active manufacturer's forum with discussions of all aspects of Z
Train Board	<a href="http://www.trainboard.com/highball/index.php?forums/z-scale.113/">http://www.trainboard.com/highball/index.php?forums/z-scale.113/</a>	Active forum of Z discussions
Yahoo Z	<a href="https://groups.yahoo.com/neo/groups/Z_Scale/info">https://groups.yahoo.com/neo/groups/Z_Scale/info</a>	Extensive library
Z Central Station	<a href="http://www.zcentralstation.com/">http://www.zcentralstation.com/</a>	Extensive library and chat

## Z Bend Track

Manual <http://www.ztrackmagazine.com/z-bend-track-manual/>

Bay Area Z Module Co-op: Contact Jeff Merrill [sjbazman49@yahoo.com](mailto:sjbazman49@yahoo.com)

Southern Oregon Z Model Engineers: Contact Loren Snyder [ljsnyder@charter.net](mailto:ljsnyder@charter.net)

## Sources for Z

### Local Retailers

Railroad Hobbies, 119 Vernon St. Roseville, CA 95678, 916-782-6067	<a href="http://rrhobbies.com/Railroad_Hobbies/Home.html">http://rrhobbies.com/Railroad_Hobbies/Home.html</a>	Märklin and MTL
Roger's Railroad Junction, 105 S. Sacramento St., Lodi CA 95240, 209-334-5623	<a href="http://rogersrailroadjunction.com/">http://rogersrailroadjunction.com/</a>	AZL & MTL dealer, Rokuhan and ZTrack
The Western Depot, 1650 Sierra Av. #203, Yuba City, CA 95993, 530-673-6776	<a href="http://www.westerndepot.com">www.westerndepot.com</a>	AZL and MTL

### Manufacturers

Atlas	<a href="https://shop.atlasrr.com/default.aspx">https://shop.atlasrr.com/default.aspx</a>	Flex track, turnouts and detailing accessories
AZL	<a href="http://www.americanzline.com/">http://www.americanzline.com/</a>	Locomotives & rolling stock
Intermountain	<a href="http://intermountain-railway.com/">http://intermountain-railway.com/</a>	N. American rolling stock
GCLaser	<a href="http://www.gclaser.com/">http://www.gclaser.com/</a>	Laser-cut structure kits
Märklin	<a href="https://www.marklin.com/">https://www.marklin.com/</a>	European locomotives and rolling stock, track and accessories
Micro Trains Lines	<a href="https://www.micro-trains.com/index.php">https://www.micro-trains.com/index.php</a>	Locomotives & rolling stock, track & structure kits
Micron Art	<a href="http://www.micronart.com/">http://www.micronart.com/</a>	Brass structure kits & scratch build
Micro Structures	<a href="http://www.micronart.com/">http://www.micronart.com/</a>	Brass structure & electric billboards
Rokuhan	<a href="http://www.rokuhan.com/english/">http://www.rokuhan.com/english/</a>	Japanese locomotives & rolling stock, track, controllers

### Internet Retailers

Z Scale Monster Trains	<a href="http://www.zscalemonster.com/z.htm">http://www.zscalemonster.com/z.htm</a>	All the major and many minor manufacturers
Needtrains	<a href="http://needtrains.com/index.php?main_page=index&amp;cPath=48_19">http://needtrains.com/index.php?main_page=index &amp;cPath=48_19</a>	Multiple scale but good selection of Z
z.scale.hobo	<a href="http://www.zscalehobo.com/">http://www.zscalehobo.com/</a>	Major manufacturers plus many German manufacturers
Z Track Resale	<a href="http://www.ztrackresale.com/">http://www.ztrackresale.com/</a>	Everything preowned in Z

Due to space limitations this list is just a representative example of the many sources of Z scale products.





PCR/NMRA

## ENDURING RAILS

PCR Convention  
April 4-8, 2018

Double Tree by Hilton Hotel  
Sonoma Wine Country  
One Double Tree Drive  
Rohnert Park, CA 94928

RETURN FORM AND PAYMENT TO:

Enduring Rails 2018  
c/o Gus Campagna  
1915 William Drive  
Penngrove, CA 94951-9524

E-mail:  
mailto:er2018registrar@pcrnmra.org  
Website: www.pcrnmra.org/conv2018

### Registration Form

Hosted by **Redwood Empire Division PCR & the  
Northwestern Pacific Railroad Historical Society**

Please Print

Last Name	First Name	Name for Badge	
Address		City	State & Zip
Home Phone	E-mail address	NMRA #	
Registration Type (Please check one) Model Railroader <input type="checkbox"/> Non-Rail/Spouse <input type="checkbox"/> PCR First Timer <input type="checkbox"/> Youth <input type="checkbox"/>		NMRA Region (If other than PCR) _____ NWPRHS Member Yes <input type="checkbox"/>	
I am available to volunteer at the convention on <input type="checkbox"/> Wednesday <input type="checkbox"/> Thursday <input type="checkbox"/> Friday <input type="checkbox"/> Saturday <input type="checkbox"/>			
Primary Scale Interests	<input type="checkbox"/> HO <input type="checkbox"/> N <input type="checkbox"/> S <input type="checkbox"/> O <input type="checkbox"/> G <input type="checkbox"/> Narrow Gauge <input type="checkbox"/> Other _____		
Railroad you model			

Non-Rail's Name for Badge:

FARES: Please fill in Quantity and Total	Quantity	Unit Cost	TOTAL
<b>Full Registration</b> includes Awards banquet and Membership breakfast		<b>118.00</b>	
<b>First Timer Registration</b> (PCR members who have not registered for the past 5 conventions)		<b>98.00</b>	
<b>Non-Rail Registration</b> (Includes Lunch)		<b>98.00</b>	
<b>Youth Registration</b> (12-18 years old)		<b>68.00</b>	
Sturgeons Mill Tour (Steam powered saw mill)		<b>40.00</b>	
Korbel Wine Tasting Tour (includes Bus Transportation)		<b>25.00</b>	
SMART Maintenance Facility Tour		<b>20.00</b>	
Convention Car HO NWP Double Sheathed Boxcar Kit 1@\$25; 2@\$48; 4@\$92; 6@\$126			
Grey Convention Polo Shirt ** <input type="checkbox"/> S <input type="checkbox"/> M <input type="checkbox"/> L <input type="checkbox"/> XL <input type="checkbox"/> 2XL <input type="checkbox"/> 3XL <input type="checkbox"/> 4XL <input type="checkbox"/> 5XL <input type="checkbox"/> W or <input type="checkbox"/> W/O pocket		<b>\$30.00</b>	
Are you interested in the Napa Valley Wine Train? Dinner <input type="checkbox"/> Lunch <input type="checkbox"/>			
Payment by: Check <input type="checkbox"/> Cash <input type="checkbox"/> (use the website to pay with PayPal/Credit Cards) Make checks payable to: <b>PACIFIC COAST REGION OF THE NATIONAL MODEL RAILROAD ASSOCIATION</b>		<b>TOTAL</b>	

4-16-17

**\*\*Order shirts before March 2, 2018**



**Walt's**  
Trains & Electronics

walts-trains.com  
1140 3rd Street - Colusa, CA 95932  
Open: Wednesday - Saturday, 9-5  
Monday-Tuesday, by appointment

866-924-3044

## Full Service Train Shop for Your Hobby Needs

Over 3,000 line items available - plus Estate items

Will special order for you

Discount prices O, On30, HO, HOOn3, N scale equipment and supplies



Visit our large 1,200 Sq. Ft.  
Store Display Layout





# **CALL FOR CREW - CREW LIST SECOND OP session of 2018 Colusa Shasta Div., SATURDAY – MAY 5, 2018**

You are invited to “Mark Up” for this OP session.

Please RSVP WITH:

**FIRST:** Please indicate by number your response to this invitation:

1. I will definitely be there.
2. I hope to be there and will let you know later.
3. I can't make this one - Please keep me on the list.
4. I am sorry - I can't make your sessions - Please remove me from the invite list.

**SECOND:** Please NOTE YOUR job ASSIGNMENT – first come-first serve. If there is a problem, please let me know.

Thanks.

Walt

## **SOME DETAILS**

Date 5-05-2018, a Saturday

## **SCHEDULE:**

Arrival, 9-9:30 am

Orientation, 9:45 am

Start time, 9:45 am

Beans @ noon – Donation of \$5.00 plus any tip you wish to give the cook

Last train out at 4:30 pm – stay longer, if you like.

We operate on a 1 to 1 clock

New operators will be teamed up with a seasoned operator.

Bring Your NCE Radio Cab and FRS Radios – IF YOU HAVE THEM. Radios are used by the crew to report passing all OS points, to the CD. WE USE AN EAR PIECE AND PUSH TO TALK TO MINIMIZE RADIO CHATTER AND ALLOW THE CHIEF AND CREW DISPATCHERS TO CONTACT YOU, AS NECESSARY.

Signals are installed and active from Redding to Mt. Shasta.

We use JMRI scheduling paperwork, for all trains: Through, Locals and Turns.

Hope to see you here.

Walt and Carolyn Schedler

1140 3rd St.

Colusa, CA 95932

(530) 458-8383

(408) 431-1660 cell