



SHORT LINE

Sierra Division * Pacific Coast Region * National Model Railroad Association

In This Issue

A Union Hall for Betapon	1
From the Superintendent	2
Call Board	2
From The Editor	3
Time Table	4
3rd Quarter Meet Report	10
International Rail Fair	19
Tech Line	23
Update from Gary Ray	26
Bakersfield Prototype Meet	28
NMRA Interchange	29
Sierra Division Calendar	31
Fast Tracks Loan Program	32
Around And About	33
NMRA Partnership Program	34
Membership Application	36



Betapon Gets A Union Hall

By Ben Hughes

The year is 1929, and the small town of Betapon, which serves the Has-told Lumber Company and the Tuyred Mining Corporation operations has just been graced with the building of a small union hall that is used by the members both the United Mine Workers Local #97 and the United Lumber Workers Local #10. While this may seem to be an unusual arrangement, both unions, which were organized a few years earlier in this era that saw less than favorable conditions for union organizations, are too small for each have their own hall so they decided to cooperate and share the cost and use of the hall.

The local contractor who built the hall was kind enough to document the work of his construction crew during the build and before handing the keys to the union leadership.

See "Union Hall", page 5

Sierra Division Callboard

PCR business or questions:

PCR President

Frank Markovich

frank@markovich.com

(408) 505 2727

Director, Sierra Division

Lou Anderson

louiesqd@att.net

(480) 845-8480

Sierra Division business, questions, or
to volunteer to give a clinic, for mem-
bership problems,

Superintendent

Dave Putnam

dave@daveandlisa.net

(661) 753-6006

To volunteer your layout for a tour or
"Timetable" entries:

Chief Clerk

Dave Fryman

fryperson@hotmail.com

(925) 360 1377

Paymaster

Michael Eldridge

meldridge2000@gmail.com

(408) 663-2019

SHORT LINE Editor

Chip Meriam

chipmeriam@comcast.net

(530) 899-2609

Contest Chairperson

Mike Hamlin

mikeandjerihamlin@gmail.com

(530) 526-4408

Membership Chairperson

Jim Collins

(209) 566-0935

jimcoll51@gmail.com

For Golden Spike or NMRA

AP Certificate questions:

Achievement Program

Dave Bayless

(530) 613-5784

Webmaster

Michael Eldridge

meldridge2000@gmail.com

(408) 663-2019

Short Line is published quarterly by the
Sierra Division of the Pacific Coast
Region of the National Association.
Material may be reprinted with permis-
sion.

Articles, photos, tips, or ideas are heart-
ily encouraged and will be enthusiasti-
cally accepted! The preferred format
would be in Rich Text Format (RTF),
with photos as JPEGs, but we will ac-
cept any format (from a PC or Mac; MS
Word, Simple Text, typed, or handwrit-
ten). Send it to your editor by regular
mail to Short Line, 2260 Cherry Glenn
Ct., Chico, CA 95926 or by email to :

chipmeriam@comcast.net If e-mailing
put EDITOR in the subject line.

From the Superintendent



**Dave Putnam,
Division Superintendent**

While the outside temperatures are beginning to moderate to a more comfortable level, things are starting to heat up in our division's area for model railroading activity. November is Model Railroading Month, and we have a couple of notable upcoming events happening in our division during that month.

Prior to covering the upcoming events, I want to step back and thank the Northern Nevada layout owners who granted access to their home and club layouts during our division tour and meeting weekend in mid-August. This was the first time since August 2017 that our division held a quarterly business meeting in Nevada and the nine layouts on the tour did not disappoint those of us who made the trip. Special thanks go out to the [Carson City Railroad Association](#) for

providing us with the venue for our meeting.

On the first weekend in November (Nov. 4th & 5th) the NMRA is sponsoring a modular layout showcase on the floor of the California State Railroad Museum's roundhouse. I'm told that prior to the COVID Pandemic, this was a regular annual event but had disappeared due to the museum's one year closure and cautions put in place following reopening. The museum administration has agreed to allow modular groups back to set up their layouts for museum visitors. As of this date, we have a total of 7 individual and group layout owners who've committed to participate. The layouts feature a variety of scales from Z to O gauge and come from many locations throughout California. While a visit to the museum is always a good option, this will be an especially good weekend to head to Sacramento to see some great layouts.

On the following weekend of Nov. 11th and 12th the [International Rail Fair \(IRF\)](#) takes place at Cal Expo. This is a new venue for this annual train show which is co-sponsored by our own Sierra Division along with the [Roseville Roundhouse Model Railroad Club](#), [Sacramento Modular Railroaders](#) and [Sacramento Chapter of the European Train Enthusiasts](#). Traditionally this event has been one of our division's main sources of annual revenue, so our participation provides obvious benefits.

In the past, when IRF was held in Roseville, our members volunteered their time staffing the admission gate in order to share in the profits from the show. CalExpo personnel will be handling that task so this year and the IRF committee has asked us to provide clinics for the public that will be attending the show. The hope is that these clinics will be targeted more towards the novice young and older modelers who are either just discovering the hobby or might be getting back into it after a long hiatus. This is an excellent chance to polish up your skills as a clinician. If you are interested in giving a clinic, please contact [Chip Meriam](#) to secure a spot on the schedule.

We had tentatively planned to hold our final division business meeting of the year as an in-person event on December 2nd in the Stockton area. Our chosen host venue the [Tidewater Southern Model Railroad Club](#) located at the San Joaquin County Fairgrounds will not be available on that date. We hope to reschedule a visit and meeting there to a date sometime in 2024. Given the upcoming events in November mentioned above and the fast-approaching end of year holiday season, I've decided to hold this business meeting via Zoom on December 9th. An e-mail notification for the meeting coordinates will be sent out via ConstantContact about a week prior.

A handwritten signature in black ink that reads "Dave Putnam". The signature is written in a cursive style.

From the Editor



Chip Meriam,
Short Line Editor

The National Model Railroad Association President's Award

The NMRA President's Award for Service to the Division is awarded by the NMRA President to one individual in a Division in each Region per year, who has done outstanding work to make his or her local Division effective, engaging, and welcoming to members. Individuals are recommended to the NMRA President by the NMRA National Board of Directors, National Officers, or Region Presidents, as appropriate, and preferably always with the guidance of the Region Officials.

“**one** individual in a Division in each Region per year...”

There are 14 Regions (including British and Australasian) comprised of 181 Divisions in the National Model Railroad Association. I haven't dug any deeper, but I did do a little math:

181 Divisions must include about 18,000 members (or more).

So one member per Region is 14 members chosen each year. 14 out of 18,000 is .07778% (seven one hundredths of one percent).

In other words, the recipients of the NMRA President's Award for Service to a Division are a select few.

Now let's bring this home:

Sierra Division is one of four Divisions within the Pacific Coast Region, the others being Redwood Empire, Coast, and Daylight. At the end of August 2023, the total PCR membership stood at 780. That means that Gordy Robinson, the NMRA President, had 780 choices of people in the PCR upon whom to bestow this honor.

And Gordy chose **Dave Putnam**, our very own Division Superintendent! Quite an honor, wouldn't you say? Congratulations to Dave for a well deserved moment in the spotlight.



Our annual hobby promotion and fund raising activity, International Rail Fair, has traditionally been the 2nd weekend in November (a recent exception was 2022 when it took place in October). This year Rail Fair will be November 11 and 12 at a new venue, Cal Expo (see page 19).

We're excited about this event. Not only is it a great new location, but we're promoting the Square Foot Diorama Challenge (see page 20), and the "2 Days to Color Sacramento" event (see page 21). What's more, Sierra Division has a new assignment this time. Rather than sell tickets and staff the entrance gates, we'll be presenting clinics both days. The clinic schedule is almost filled, but if you are interested in presenting a 30-minute clinic, please contact me before October 6. chipmeriam@comcast.net

We'll also be promoting NMRA membership and managing the TimeSaver switching exhibit.
SEE YOU THERE!

A handwritten signature in black ink, appearing to read "Chip Meriam".

SIERRA DIVISION

Next In-Person Meet: February 10
Sacramento
9:00 AM
OP Session at SMRHS
1990 Grand Avenue

February Contest Categories:

Modeling: Any structure you have built during the past twelve months

Photo: Track and Structures

Railroad Arts & Crafts

TIMETABLE

Feb 10, 2024
Sacramento

May 11, 2024
To be determined

Aug 10, 2024
To be determined

Oct 12, 2024
To be determined

SHORT LINE

Dec 10 for the Jan Issue

Mar 10 for the Apr Issue

June 10 for the July Issue

Sept 10 for the Oct Issue

Sierra Division continues to have online meets via ZOOM. Future online meets will be held the second Saturday of each month when an in-person meet is not scheduled.

UPCOMING ONLINE MEETS

(all beginning at 10:30 AM)

October 14, 2023

December 9, 2023

January 13, 2024



nmra.org
2024 NMRA
NATIONAL CONVENTION
SURFLINER
LONG BEACH, CA
2024
AUGUST 4 - 11
LONG BEACH, CA
WWW.SURFLINER2024.ORG
GET ON BOARD TODAY!
Pacific Northwest Region
NMRA



November 11 & 12
Cal Expo—Bldg. C
SAT 10 - 5 SUN 10 - 4

www.internationalrailfair.com

Where the Art of Modeling Meets Technology
THE TECH LINE
PCR Convention 2024 - Silicon Valley, CA

Sonesta San Jose Hotel from April 24-28, 2024.

[PC2024 website](#)

“Union Hall” from page 1 (NOTE: There is a persistent rumor going around Betapon that this building was inspired by photos in a recent railroad magazine touting the union hall in a mining community far to the south called Bodie. These rumors may or may not be correct.)



The construction crew, following the principal of the “7 P’s”, used many layout lines to be sure the purchased windows and doors fit properly.

[Editor’s Note: The Army’s acronym, **Seven Ps of Planning: Proper Planning and Preparation Prevents Particularly Poor Performance**. The Army uses a word other than “particularly” but this is a family publication.]

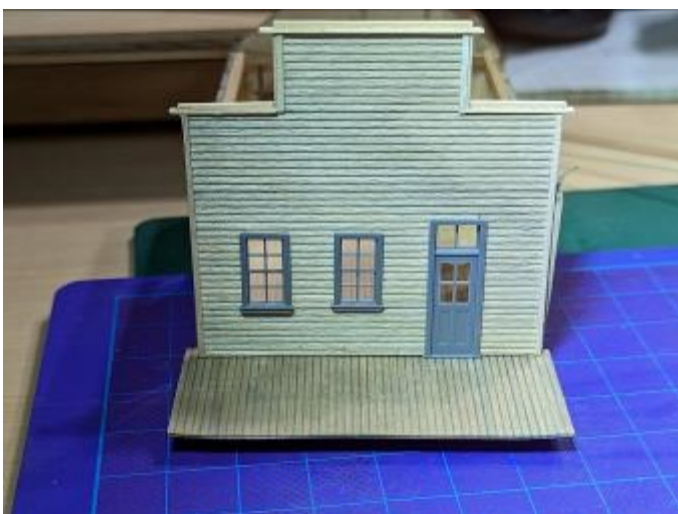
Continued on page 6



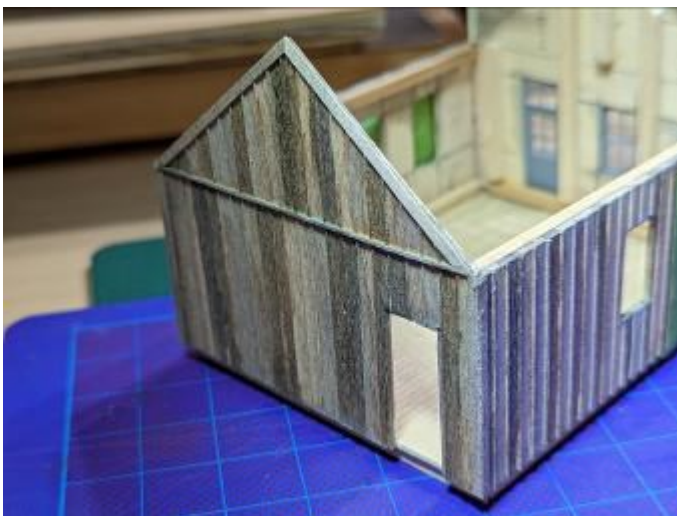
A special jig was constructed to insure that walls met at perfect 45 degree corners. (*MR, August, 2023*)



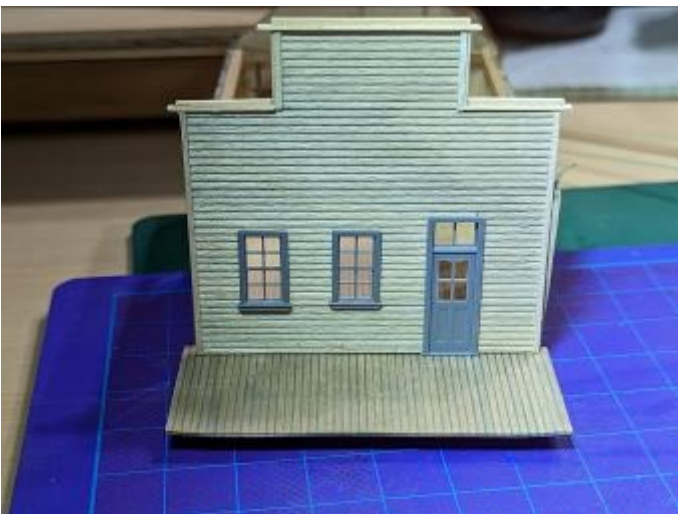
Someone told the construction foreman that major components should be pre treated before assembly. Not having quite precise instructions, different members of his crew used 5 different stain mixtures on various boards. (NOTE: A base coat of very old "Sweet & Sour" [steel wool & vinegar], followed by various proportional mixtures of an old brown liquid shoe polish & 91% alcohol, and Micro-Mark Railroad Tie and Bridge Stain {83760} Gray/Brown.)



Clapboard Front Wall & front porch

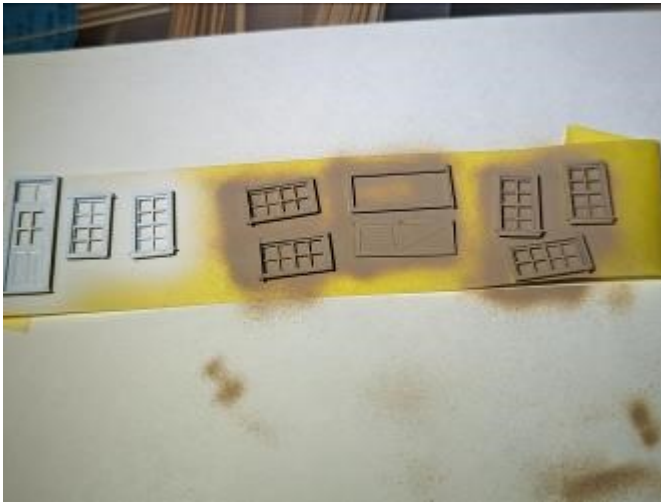


Rear Wall & Side Wall – note the corner achieved using the 45 degree jig.



Adding Trim Detail to the False Front.

Continued on page 7



Painting the Doors & Windows. The brown is a coat of Wood Deck Tan, preparing the purchased windows for a coat of diluted brown shoe polish.



Back & Side walls assembled and braced for handling – note stained windows. The union membership voted for the light blue Front wall.



The construction crew balked at going on the thin balsa roof until it was properly braced.



An “add-on” storage shed was constructed for the rear of the building.



The roof was covered with tar paper.

Continued on page 8



Walls assembled. Front wall lettered. Framework to support the porch roof in place.



Front Roof installed



Rear of Building & Shed corrugated metal Roof.



Drone Front Quarter View of completed building.

Continued on page 9



Drone RearQuarter View of completed building.



Shed & Rear Door details.



Checkers anyone?? (NOTE: The BTS Chairs are neat but very fragile!)

List of the Construction Materials Utilized:

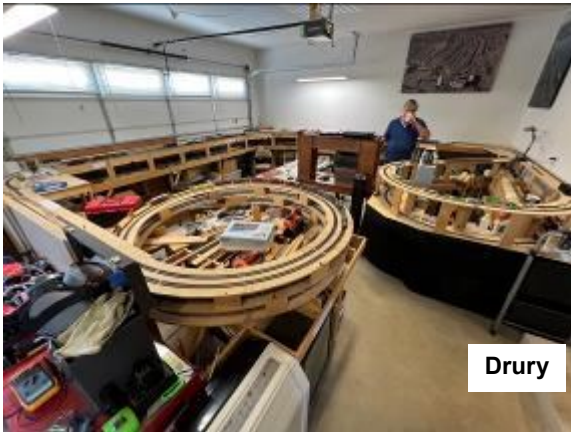
- Northeastern Clapboard and Board & Batten Siding
- Tichy Doors & Windows
- Builders in Scale Rolled Tar Paper
- Wild West Corrugated Roofing
- B.T.S. Chairs & Pigeon
- Evergreen Smoke Jack
- Grant Line Hinges
- Sierra West Barrel

August Meet Carson City/Reno

For the first time in six years, the Sierra Division visited Northern Nevada. Superintendent, Dave Putnam, arranged for open house layout tours in Carson City, Fernley, Reno, and Sparks. Although we did have a short business meeting at the Carson City Railroad Association's Mills Park Station, the August meet was exclusively self-guided layout tours.

We all enjoyed seeing the work and various stages of progress of our fellow modelers in the Silver State. Our heartfelt thanks to all of the layout owners who graciously opened their layouts (and homes) to all of us who attended.

The following is a photo-essay of several layouts we visited.



Dennis Drury At Home On His Railroad
(photo Dave Putnam)



The "Drury Helix"
(photo Ethan Doty)



"Chasing Its Tail On The The "Drury Helix"
The Geeps Are Directly Above Their Caboose.
(photo Lorri Meriam)



David Fryman (seated), Ethan Doty (center) with host,
Dennis Drury
(photo Lorri Meriam)

Continued on page 11

Carson City/Reno, ct'd.



Gus Campagna, Marcy C Moore-Campagna, Chip Meriam, Mike and Mike Hamlin (L-R) Listening To Dennis Drury Describe His Previous Career With The Southern Pacific (photo Lorri Meriam)



The Opening Scene Of Jim Price's Southern Pacific (photo Lorri Meriam)



In An Adjoining Room, The Oakland Mole (photo Lorri Meriam)



Then There's The Addition (photo Ethan Doty)



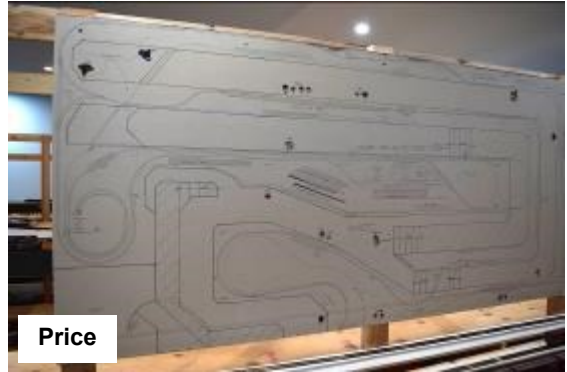
And The Rest Of The Addition Note The Upper Level Benchwork Under Construction (photo Ethan Doty)

Continued on page 12

Carson City/Reno, ct'd.



Emeryville Station
(photo Ethan Doty)



Jim Price's Track Plan
(photo Ethan Doty)



Comin' Round The Mountain
On Pat Mobley's N Scale Layout
(photo Lorri Meriam)



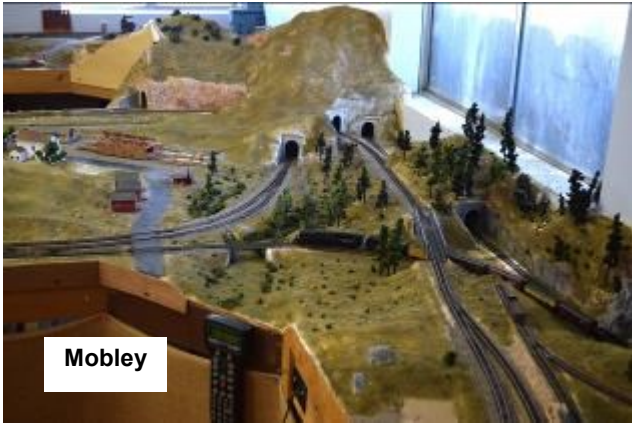
Our Thanks To Pat Mobley For Sharing His N Scale Dream
(photo Lorri Meriam)



Would You Believe All Hand-Carved?
(photo Ethan Doty)

Continued on page 13

Carson City/Reno, ct'd.



More Of Mobley's Remarkable N Scale Scenery
(photo Ethan Doty)



And A Bit Of Animation - An Operating Stamp Mill
(photo David Fryman)



Long And Narrow Views of Jim Petro's Denver & Rio Grande Western
(photos Ethan Doty)



Petro's D&RGW Engine Service Facility
(photo David Fryman)



Mike Coen's WP #179 Visits the D&RGW
(photo Ethan Doty)

Continued on page 14

Carson City/Reno, ct'd.



Crossing At Palmer Lake
(photo Chip Meriam)



“Friendly” Competitors Share The Action At Palmer Lake
(photo Lorri Meriam)



Front Yard Scene As View From The Street
Hawley MacLean’s G-Scale Garden Railroad
(photo Lorri Meriam)



One Of The Many Station Stops On MacLean’s Garden Railroad
(photo Dave Putnam)



Our Host, Hawley MacLean
(photo Lorri Meriam)

Continued on page 15

Carson City/Reno, ct'd.



Just Your Typical Back Yard?
(photo Lorri Meriam)



Indoors, Too.
(photo Lorri Meriam)



Water And Rails
(photo Lorri Meriam)

WATER & RAILS

Pond & Garden Railroad Tour

The Water & Rails Tour is a unique, two-day event organized by MacLean Financial Group and Rail City Garden Center to benefit the ALS Association Nevada Chapter. This family-oriented event invites visitors to take a self-paced home tour to see some of the most impressive ponds and garden railroads in Northern Nevada.

Proceeds from the event benefit the ALS Association Nevada Chapter, an independent nonprofit organization that serves ALS patients and their families in the Silver State by providing programs that offer emotional, physical, and financial assistance. Programs include home visits, medical equipment loans, counseling, support meetings, and more.

[Visit NV ALS Website](#)

Continued on page 16

Carson City/Reno, ct'd.



Michael Eldridge Visited The Nevada State Railroad Museum While Many Of Us Were Touring Layouts
(photos Michael Eldridge)



Inside The Restored Depot - Nevada State Railroad Museum
(photo Michael Eldridge)



McKeen Motor Car - Nevada State Railroad Museum
(photo Michael Eldridge)



The McKeen Motor Cars were the first example of an all steel, self propelled train car design in the world. They were also the first known use of purposeful aerodynamic design in North America, and the first successful use of a motive power other than electric or steam, and in being so, they were the lead into the Diesel/Internal Combustion engine era. Mr. McKeen implemented designs like the single steel sill which (reportedly) held better than two wood sills.



McKeen Motor Car Interior
(photo Michael Eldridge)

Continued on page 17

Carson City/Reno, ct'd.



Mills Park Station
(photo Lorri Meriam)



Members Arrive From A Trip Around Mills Park
(photo Chip Meriam)



Our Engineer For The Day
Chris Martinovich - Carson City Railroad Association
(photo Lorri Meriam)



Brief Business Meeting At Mills Park Station
(photo Lorri Meriam)

Continued on page 18

Carson City/Reno, ct'd.



Ethan Doty Chats With Mark Schofield
Of The Carson City Railroad Association
(photo Lorri Meriam)



Carson City Railroad Association's HO Scale Layout
Catches The Attention Of Dave Putnam
(photo Michael Eldridge)



N Scale Display Layout - Carson City Railroad Association
(photo Lorri Meriam)

INTERNATIONAL RAILFAIR

NOV 11-12 2023

OPERATING LAYOUTS!
SELLERS TABLES!
CLINICS!

HELP JUDGE THE
SQUARE FOOT
DIORAMA CHALLENGE!

SNACK BAR

TRAINMART
CONSIGNMENT STORE

KID'S LAYOUT KID'S BOXCAR **COLORING!**

\$12 SAT \$10 SUN 12 and UNDER **FREE!**

\$2 MILITARY DISCOUNT \$5 SUN KIDS 13-17

SATURDAY 10 AM—5PM SUNDAY 10 AM—4PM



CALEXPO

BUILDING C

www.internationalrailfair.com





International Rail Fair Square Foot Diorama Challenge.

The challenge: build a 1 foot square di-orama that has at least one railroad related element and one holiday themed element. The railroad element doesn't have to include track. The holiday element should related to one of the holidays from Thanksgiving through New Year's Day. Both elements should be obvious. There will be a People's Choice award.

We're giving attendees a chance to vote for their favorite diorama. The top vote getter will receive a trophy and a \$50 gift card to RC Country Hobbies in Sacramento. This can be a fun modeling activity and it will be an additional cool thing that our attendees can look at. You can reach me, Tom Campbell, at tom.c.irf@gmail.com if you have questions about the *Challenge* or any-thing IRF related.



2023 International Railfair Presents:

2 Days to Color Sacramento

We're elevating our kid's coloring station at IRF 2023.

A major part of the fun of model railroading is creating (or re-creating) your world. We invite the kids and their adults to enjoy that process through coloring during a two day coloring event.

There will be an 8 foot table, similar to the drawing to the right, with a 4 foot section in the middle devoted to a representation of a chunk of Sacramento circa 1950.

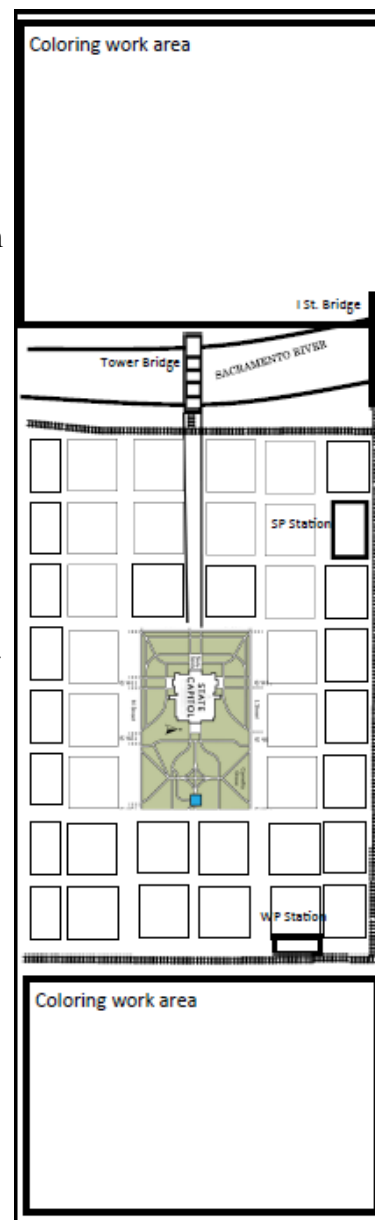
The Map: The main features of the map will be drawn on butcher paper.

Models: There will be paper covered XPS foam block models representing both the Tower Bridge and the I street bridge (which were both railroad bridges in the 1950s.) There will also be models of the Capitol building, the Southern Pacific RR station, and the Western Pacific RR station. These landmark models will all be pre-colored and fixed to the map. Then there will be uncolored paper-covered XPS foam block models of generic office buildings, houses, trees, and railcars. These will all be positioned on the map and held in place with a bit of low tack, repositionable tape.

Volunteers will offer participants the chance to decorate a railcar, a house, a tree, or an office building. Or if they want, they can color in the Sacramento River, grassy areas of the Capitol Park and elsewhere, the railroad ties, or the roads directly on the map. Participants can work on coloring their block models in the designated coloring work areas or on an adjoining table where there will be other things to color.

Trains: We'll have a passenger train along the stretch by the SP station, a freight train coming off the Tower bridge and headed down Front Street, and one more freight train on the WP tracks on the bottom of the display area.

Media: We'll post pictures of the progress throughout the weekend.



APRIL 24-28, 2024

PCR Convention 2024

Where the Art of Modeling Meets Technology

THE TECH LINE

PCR Convention 2024 - Silicon Valley, CA

SEE NEXT PAGE FOR DETAILS

REGISTER
NOW !!

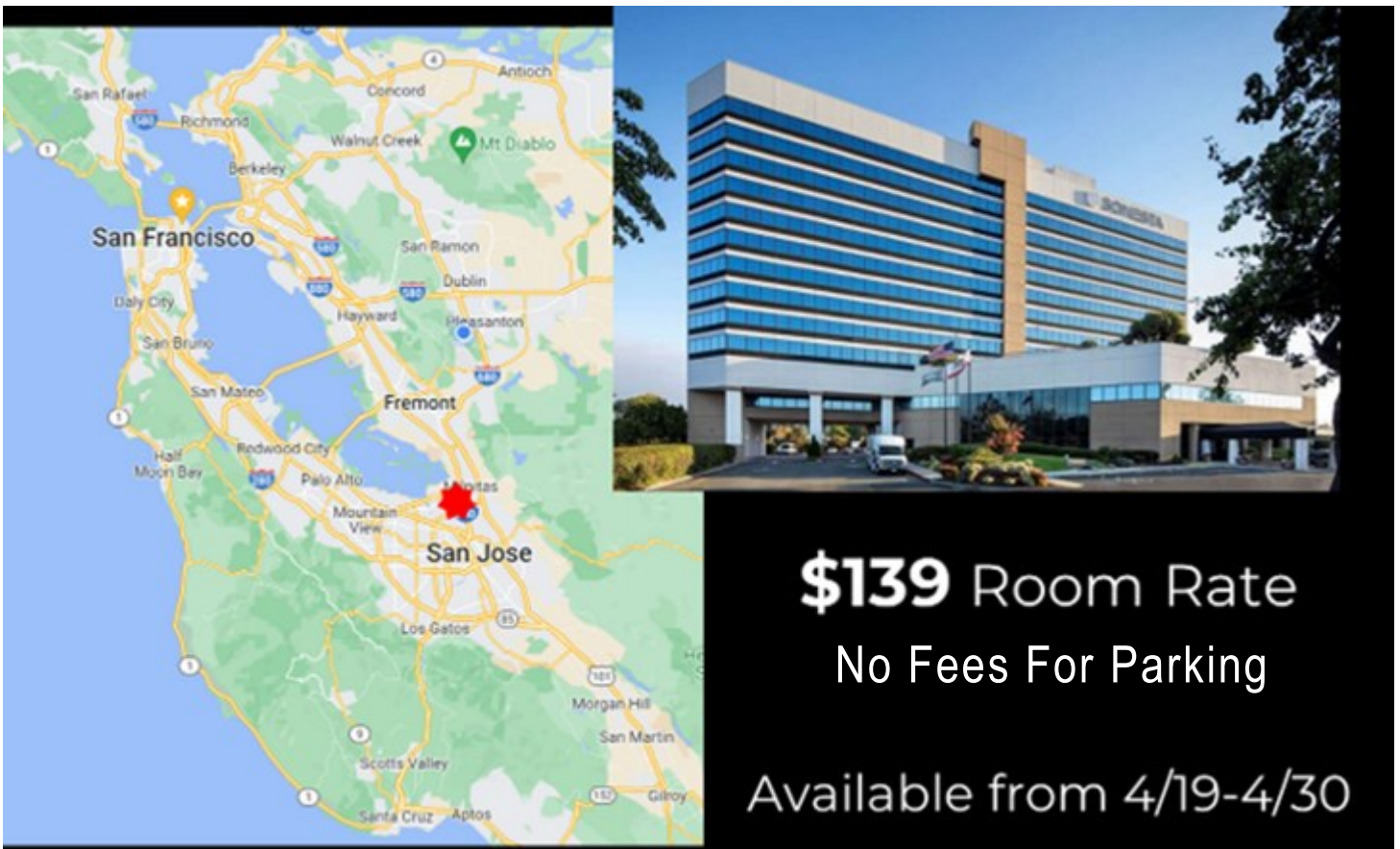
<https://pcrnma.regfox.com/pcr-2024-convention>

Where the Art of Modeling Meets Technology

THE TECH LINE

PCR Convention 2024 - Silicon Valley, CA

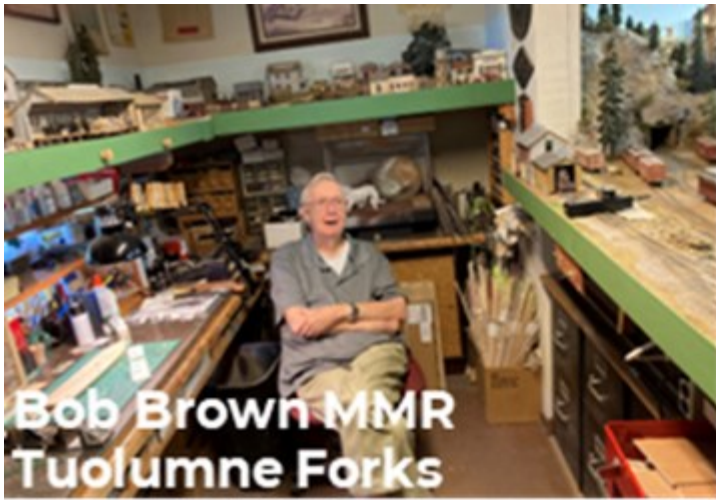
The 2024 PCR Convention will be hosted by the Coast Division at the Sonesta San Jose Hotel from April 24-28, 2024. The Sonesta is ideally located for great layout tours, prototype visits, and other activities. The hotel has great convention facilities, enabling a vendor and swap meet. AND the **PARKING IS FREE!**



\$139 Room Rate
No Fees For Parking
Available from 4/19-4/30

The layout tours will feature the great layouts of the Bay Area. It has been 8 years since the last NMRA convention in the Bay Area and there are some great improved and new layouts. We are planning on having over 30 layouts open during the convention.

Continued on page 24



In addition to great layouts, there will be excellent clinics .



Continued on page 25



The convention will include prototype tours and operating sessions as well as lots of other model railroading activities. Check out the [PC2024 website](#) for more information. Don't miss this opportunity to go to a great local convention. With the great \$139 room rate and all of the great model railroading attractions, this is a convention not to be missed.



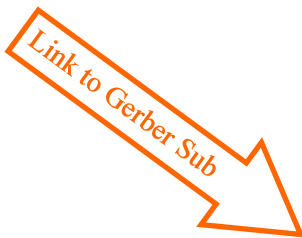
AN UPDATE FROM GARY RAY



“Thought I'd give you a status report on the new Gerber Sub.

I've completed all the towns except Redding and the staging. I've met my goal of finishing this much by July 1. Now on to wiring and at least one finished scene in Proberta.

My blog shows the last two towns that were completed today. Except for Proberta and Gerber, there are gaps in the track where bridges go. Their installation can proceed now that the NMRA National Convention is over.”

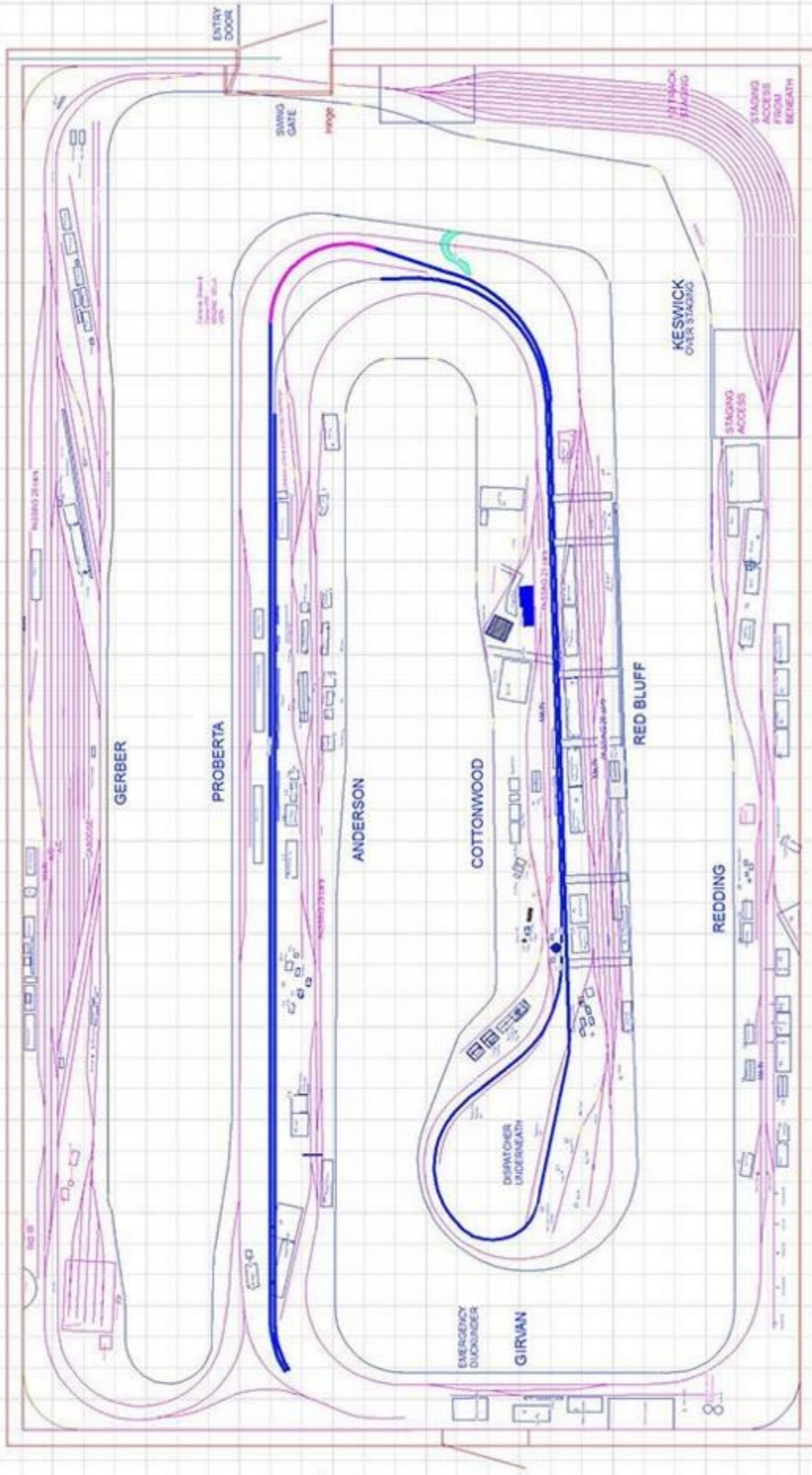


<https://www.southernpacificlayout.com/>

SEE TRACK PLAN ON NEXT PAGE



GERBER SUB OF SOUTHERN PACIFIC SHASTA DIVISION ~ 1926 ~ Gary Ray
INTERIOR 25' X 44'



Presented by
The Southern Pacific Historical & Technical Society
As part of its 2023 Annual Convention

2023 Bakersfield Railroad Prototype Meet

Saturday October 28 • 8:30 a.m. to 3:30 p.m.
Doubletree by Hilton Hotel Bakersfield
3100 Camino del Rio • Bakersfield, California



All scales and railroads are welcome!
Display models can be finished or in-progress.

Admission: \$40

Please, no children under the age of 12



Schedule

- 8:00 a.m. Registration Opens. Lake Ming Room
- 8:30 a.m. Vendor Room Opens. Buena Vista/Kern Rooms
- Morning Presentations: San Joaquin Room*
- 9:00 a.m. Joe Strapac: *SP Diesels on Tehachapi in the 1970s*
- 10:30 a.m. Dave Maffei: *The Road to Run Eight Weathering*
- 11:30 a.m. Lunch Break
- 1:00 p.m. Vendor Room Closes

Afternoon Presentations: San Joaquin Room

- 1:00 p.m. A. J. Chier: *3D Printing for the SP Modeler*
 - 2:15 p.m. Tony Thompson: *Modeling Transition-Era SP Passenger Equipment*
 - 3:30 p.m. Railroad Prototype Meet Ends
- Please remove models by 4:00 p.m.



Southern Pacific Historical & Technical Society
1525 Howard Access Rd. Unit E, Upland, CA 91786 • www.sphts.org

Have you joined the NMRA Interchange? It's the newest tool to help you connect with other members, gain knowledge and learn to modeling techniques. The Interchange is hosted on the Discord application which is available for Windows, Apple OS, Android and Apple devices. See instructions below for signing up.

Joining the NMRA Interchange

Speed Muller

IT Manager, NMRA

Have you joined the Interchange yet? If not, follow these steps to get connected!

1. Go to nmra.org/nmra-interchange
2. It will ask you to log in to the NMRA website if you're not already logged in. If you are not registered with the NMRA website yet, now's the time to do it. Click the "Need a username? Register now" button, and get set up. Use the email address on file in the NMRA membership system (probably the one where you got this eBulletin). The system will email you a link to set your password.
3. Now you should be in the [NMRA Interchange](#) page. If not, click this link.
4. Click on [Member Info](#) in the top right corner and scroll down get your exact Member ID. You'll need that later.
5. Read through the page and then follow the "Interchange Server Invite" link at the bottom. This is a special link just for you and will look something like <https://discord.gg/xxxxxxx>
6. You will be taken to Discord (the platform that hosts the NMRA Interchange) where you will be prompted to sign in, if you already have an account there, or prompted to register, if not. If you need instructions for creating an account or logging into Discord they can be found [here](#).
7. Once you accept the NMRA Interchange Invite, and you are logged in, you will land in **#the-lobby** with a message on what to do next.
8. We suggest that you read and agree to the **#rules** first. Just click on **#rules** and then click on "thumbs up". Then click on **#the-lobby** again to do the most important step.
9. Discord and the NMRA need to check with each other, in order to verify that you are a current NMRA member with an email on file. You start the process with the **/onboard** command. Now, this is very sensitive to the type of device you are using, so just type the first few letters **/onb** at the bottom where you see a + sign in a circle. It will complete the command for you in a pop-up just above that. Click on the **/onboard** command. Add your membership number (6 characters followed by a space and then two more characters) just as you noted in step 4. Example: `/onboard input: 123456 0A`
10. Discord and the NMRA computers will have a chat, and then you will receive an email containing a **/clearance** command. That's your entry ticket. Copy and paste the whole line into **#the-lobby** (at the + sign again). Example: `/clearance input: 654321`
11. You're in! You will not have to do any of this again. If anything derails, you'll get a message telling you what to do next, and we also have Moderators in the Interchange standing by to help.
12. If all went well, you'll now see more than 350 channels (those # things). We suggest you start by going to **#introduce-yourself** and then scroll up to **#the-workbench** to see what others have done and shared! Then find your Region and Division and say "hello" there. And then start participating and enjoy!



Walt's
Trains & Electronics

FB: Walt's Trains and Electronics
Email: waltstrains@yahoo.com

1140 3rd Street - Colusa, CA 95932

Open: Wednesday - Saturday, 9-5

Monday-Tuesday, by appointment

408-431-1660

Full Service Train Shop for Your Hobby Needs

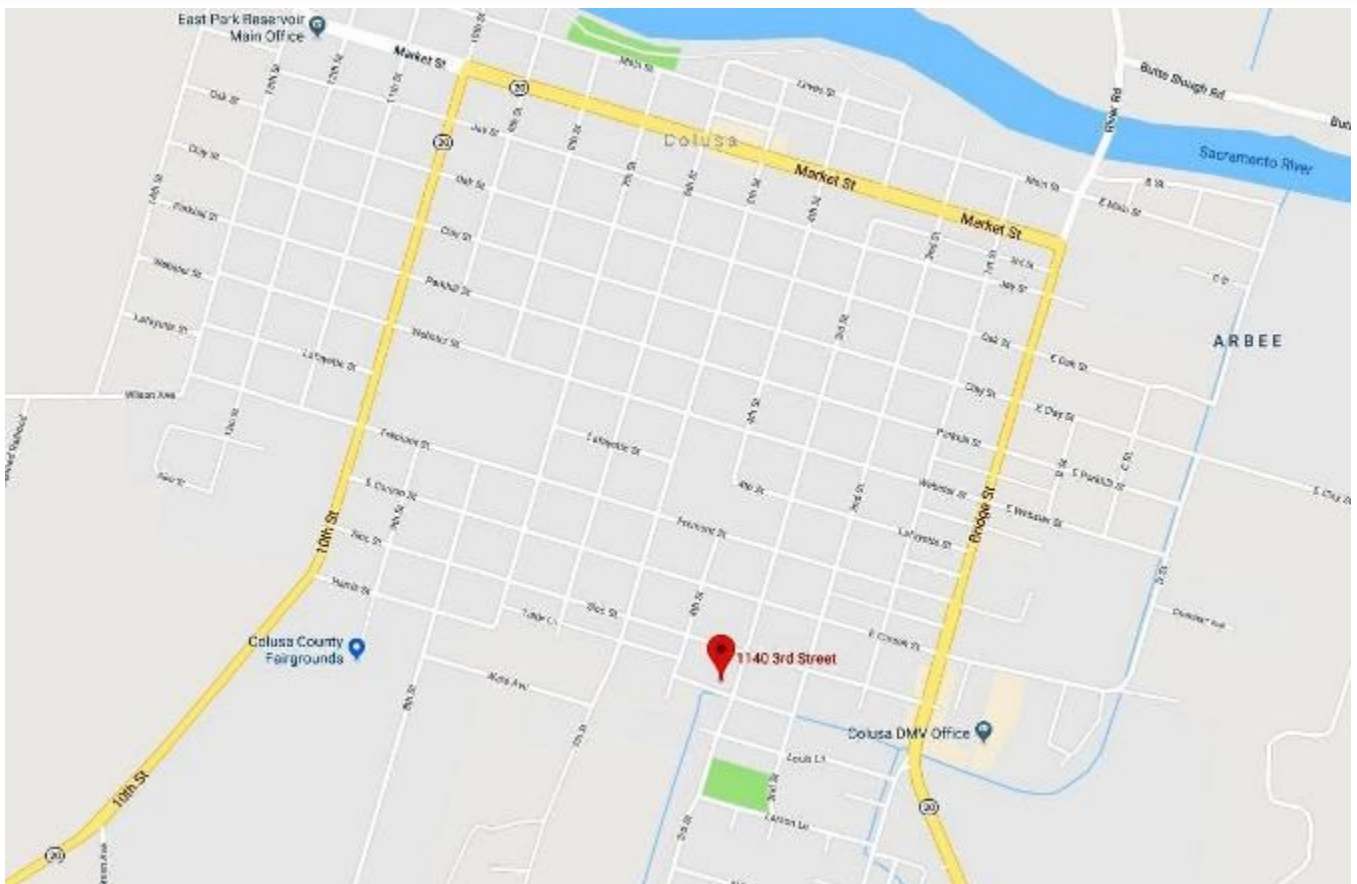
Over 3,000 line items available - plus Estate items

Will special order for you

Discount prices O, On30, HO, HOOn3, N scale equipment and supplies



Visit our large 1,200 Sq. Ft.
Store Display Layout





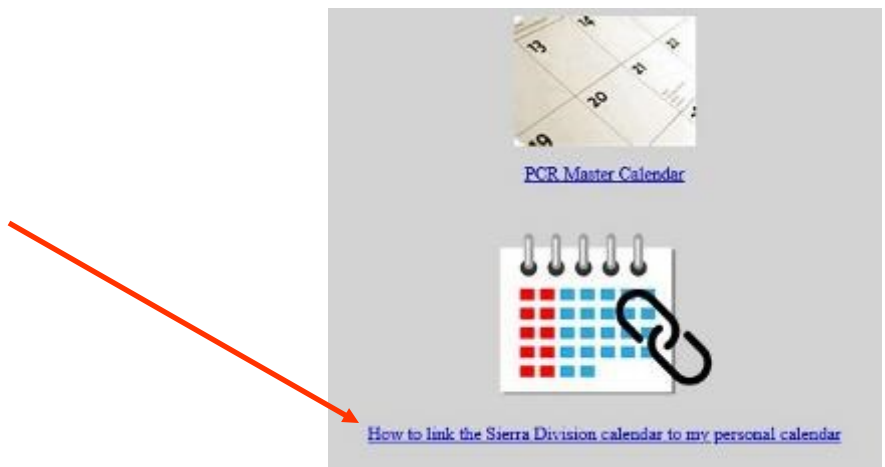
PACKRATT TRAINS & TOYS
Matt Padgett

546 Kentucky Street - Gridley, CA 95948
530-797-9264 packratt1@gmail.com

Open Wednesday thru Friday 12:00 PM to 6:00 PM and Saturday 11:00 AM to 5:00 PM

If you would like for Sierra Division events to appear in your personal calendar, you can link to the calendar on the Sierra Division website. This will work if you use Google Calendar, Outlook, or Apple's Calendar app. Go to the Sierra Division website, <http://www.pcrnmra.net/sierra>, and click on Calendar. On the right you will see a link to a page that describes how to link to the Sierra Division calendar from your calendar. After that, when events are placed on the Sierra Division calendar they will automatically appear in your calendar also.

Questions or need help? meldridge2000@gmail.com



The Sierra Division, PCR-NMRA is making available to Sierra Division members a “kit” containing the necessary tools and instructions to complete the part 3 requirements of the NMRA Model Railroad Engineer – Civil Certificate. More information on the requirement is at: www.nmra.org/civil

The Kit:

The kit includes tools and templates sufficient to create the following (you only need to construct 3):

- HO Scale #5, Code 83 Right-hand turnout
- HO Scale #5, Code 83 Left-hand turnout
- HO Scale #5, Code 83 Single crossover
- HO Scale #5, Code 83 Double crossover
- HO Scale #5, Code 83 Crossing 14 degree

How the System Works:

- Reservations are on a first-come, first-served basis. All reservations will be for a calendar month. Requests must be sent to louiesqd@att.net.
- The kit will be shipped via UPS on the first day of the month. Arrival should be within 2-3 days.
- The member may use the kit for what should be, **about** three weeks.
- The member must ship the kit back, postage pre-paid by the 25th of the month. This will allow us time to check and clean the kit and still send it out again on the first of the month. Zip ties and address information will be included in the kit. Return the kit to:
Lou Anderson, 100 Buddy Drive, Woodland, CA 95776.

Reservations:

The rental fee and deposit must be received by the 15th of the preceding month.

The rental fee for the kit is \$25.00 by separate check. This will cover the cost of shipping the kit to the member, cleaning costs and additional packaging as needed.

A deposit in the amount of \$500.00 must be included by separate check. This check will **NOT** be deposited unless the kit is not returned. When the kit is returned, the check will be destroyed.

Mail both checks, made payable to the Sierra Division, to:

Lou Anderson, 100 Buddy Drive, Woodland, CA 95776.

Preparation/Supplies:

Be prepared. Have all supplies ready and on-hand in advance of the arrival of the kit. You will need:

Micro-Engineering Code 83 NON-weathered rail, have extra on hand.

Small diameter solder.

Soldering iron, min 35 watts.

Instructions and a DVD are including in the kit or you can go to <https://www.handlaidtrack.com/> for more information.

Responsibilities:

- The member is responsible for loss and all damage to the contents of the kit. If you break it, or damage it beyond further use, notify us immediately at louiesqd@att.net. Be prepared to include a check in the amounts listed above to cover the cost of replacement.
- Please notify us as soon as possible if you wish to cancel your reservation so that we can offer it to another member.

If you have questions, please direct them to Lou Anderson at louiesqd@att.net. or Chip Meriam at chipmeriam@comcast.net.



IMPORTANT !!!!

Around And About



GE 4C44CW #7171 approaching W. Lindo Avenue grade crossing, Chico, CA, September 2, 2023. This unusual sighting of a container stack train, with only a single unit on the point, provides a welcome prototype for model railroaders with limited space; causing them to forgo multiple-unit lash-ups.

(photo: Lorri Meriam)



NATIONAL MODEL RAILROAD ASSOCIATION, INC.

**Wow! Did you know there's a new
NMRA Member Benefit?**

It's the NMRA Partner Program!

**Model railroad manufacturers are partnering
with the NMRA to offer discounts to NMRA
members.**

**Current members log in to www.nmra.org .
At the Members Menu, go to the NMRA
Partnership Page to see who's on the list,
discounts offered, and how to order. New
Partners are coming on board every month,
so check back often.**

**If you're not yet a member, here's another
great reason to join and get more fun from
your hobby with a membership in the
world's largest model railroad organization.**

www.nmra.org

See Partial List Of Partners On The Next Page



Partnership Program

The companies listed below give discounts to NMRA members when orders are placed using a special discount code. You can find descriptions of these companies and their products, links to their websites, and the discount codes on our Partnership Page at [nmra.org/partnerships](https://www.nmra.org/partnerships) . Remember you need to be logged into our site as a member to see the codes! Go to [nmra.org/user/register](https://www.nmra.org/user/register) to register your name on the website.

Bear Creek Model Railroad
CatzPaw Innovations
Clever Models LLC
CMR Products
Daylight Sales
Deepwoods Software
Deluxe Materials
Digikeijs
Dwarvin
East Coast Circuits
Feight Studios
Gatorfoam
Great Decals!
Green Frog Productions
Hot Wire Foam Factory
K.I.S.S. Method
LaBelle Woodworking
LARC Products

Logic Rail Technologies
MAC Rail
Micro-Mark
Mine Mount Models
Miniprints
MinuteMan Scale Models
Model Railroad Benchwork
Model Train Catalogue
Modelers Decals & Paint
Motrak Models
MRC (Model Rectifier Corp)
Nick and Nora Designs
Northlandz
NScaleWorks
Old West Scenery
Ram Track
RR-CirKits
Rusty Stumps

Scale Model Plans
Scalecoat Paint
Scenery Solutions
Showcase Miniatures
Team Track Models
The N Scale Architect
The Old Depot Gallery
Tichy Train Group
Touch of the Brush
Train Installations
Train Show, Inc.
TRAINZ
Trainmasters TV/MRH Store
TSG Multimedia
UGEARS
Unreal Details
USA Airbrush Supply
WiFi Model Railroad

UPDATE LIST

**A proud
Partner with**





National Model Railroad Association, Inc.

Renewal Notice

Name:			
Address:			
City:	State/Country	Zip:	
Phone:	Birth Date:	Scale:	
Email:	Occupation:		

Membership	1 Year	2 Year	Total
Member - All rights & benefits as well as the digital NMRA magazine access.	\$68.00	\$136.00	
Member with Printed Magazine Subscription – All rights & benefits, digital NMRA Magazine access and the Printed Magazine.	\$92.00	\$184.00	
Family – Spouse or minor child of above member. No magazine, no voting rights, not allowed to hold office.	\$10.00	\$20.00	
Sustaining – Mandatory for group memberships (Clubs, Business, Associations). All rights & benefits, digital NMRA Magazine access and the Printed NMRA magazine.	\$120.00	\$240.00	
Student – Between the ages of 19-25 years of age. All rights & benefits, digital NMRA magazine access.	\$40.00	\$80.00	
Membership			\$
General Donation			\$
Merchandise			\$
Region Subscription			\$
Total			\$

Thank you for being a member of the NMRA! It is extremely important to have your current email address on file. This is used for access to the member only section, turntable, ballots, voting, annual donation statements, online renewals and communication. Please be sure to note your email address below.

Email:

Make Checks Payable to NMRA. We accept MasterCard, Visa, Discover, and American Express.

Credit Card Number:

Expire Date: CVV Code: Signature: _____

NMRA Merchandise				
Item	Size (Select Size: Circle)	Qty	Price (S/H Included)	Total
Blue Denim Shirt	S M L XL 2XL 3XL 4XL		\$50.00	
Black Golf Shirt	S M L XL 2XL 3XL 4XL		\$50.00	
Grey Golf Shirt	S M L XL 2XL 3XL 4XL		\$50.00	
Khaki Ball Cap			\$22.00	
Grey Ball Cap			\$22.00	
Black Ball Cap			\$22.00	
Turnout Template HO Scale			\$5.00	
Turnout Template O Scale			\$5.00	
HO Scale Std. Gage			\$7.00	
Sn3 Scale Std. Gage			\$7.00	
O Scale Std. Gage			\$21.00	
On3 Scale Std. Gage			\$7.00	
ON30 Clearance Gage			\$18.00	
N Scale Std. Gage			\$7.00	
N Scale Clearance Gage			\$15.00	
Railway Track & Maintenance Book			\$45.00	
Lumber Book			\$35.00	
Post War Freight Car Fleet Book			65.00	
Concrete Book			\$35.00	
Porter Steam Locomotive Book			\$18.00	
Steel Book			\$50.00	
Freight Terminals & Trains Book			\$45.00	
Merchandise Total			\$	

Region Subscriptions

If you do not see your region listed, there is no charge for region subscription! Most regions offer the subscription online on the website.

21 Northeastern Region	\$12.00	28 Midwest Region	\$6.00
23 North Central Region	\$10.00	33 Southeastern Region	\$10.00
26 Pacific Coast Region	\$8.00	36 Sunshine Region	\$12.00

If your address information on the front of this notice needs updating, please let us know.

Address:		
City:	State:	Zip:
Phone:		

P. O. Box 1328

Soddy Daisy, TN 37384-1328

Email: HQ@NMRA.ORG

423-892-2846