



SHORT LINE

Sierra Division * Pacific Coast Region * National Model Railroad Association

In This Issue

Member of the Year	1
From the Superintendent	2
Call Board	2
From The Editor	3
Time Table	4
NMRA National Convention	5
NMRA at 90	6
Extra 2026 North	7
O Scale West	8
2025 PCR Levity Award	9
Build a Masonry Depot	12
Tidewater Southern	24
April Division Meet	20
NMRA Interchange	28
Sierra Division Calendar	29
Fast Tracks Loan Program	30
Around And About	31
NMRA Partnership Program	32
Membership Application	34



**David Fryman With His Much Deserved
Sierra Division Member Of The Year Award.**

David was unable to attend the Pacific Coast Region convention in San Luis Obispo, so he was presented with his award in Sacramento on April 12 at, about, 1:12 PM

Sierra Division Callboard

PCR business or questions:

PCR President

Frank Markovich

frank@markovich.com

(408) 505 2727

Director, Sierra Division

Lou Anderson

louiesqd@att.net

(480) 845-8480

Sierra Division business, questions, or
to volunteer to give a clinic, for mem-
bership problems,

Superintendent

Dave Putnam

dave@daveandlisa.net

(661) 753-6006

To volunteer your layout for a tour or
"Timetable" entries:

Chief Clerk

Dave Fryman

fryperson@hotmail.com

(925) 360 1377

Paymaster

Michael Eldridge

meldridge2000@gmail.com

(408) 663-2019

SHORT LINE Editor

Chip Meriam

chipmeriam@comcast.net

(530) 899-2609

Contest Chairperson

Mike Hamlin

hamlin6250@gmail.com

(530) 526-4408

Membership Chairperson

Jim Collins

(209) 566-0935

jimcoll51@gmail.com

For Golden Spike or NMRA

AP Certificate questions:

Achievement Program

Dave Bayless

(530) 613-5784

Webmaster

Michael Eldridge

meldridge2000@gmail.com

(408) 663-2019

Short Line is published quarterly by the
Sierra Division of the Pacific Coast
Region of the National Association.
Material may be reprinted with permis-
sion.

Articles, photos, tips, or ideas are heart-
ily encouraged and will be enthusiastically
accepted! The preferred format
would be in Rich Text Format (RTF),
with photos as JPEGs, but we will ac-
cept any format (from a PC or Mac; MS
Word, Simple Text, typed, or handwrit-
ten). Send it to your editor by regular
mail to Short Line, 2260 Cherry Glenn
Ct., Chico, CA 95926 or by email to:

chipmeriam@comcast.net If e-mailing
put EDITOR in the subject line.

From the Superintendent



Dave Putnam,
Division Superintendent

The Sierra Division has had a busy winter and early spring. This year was our division's turn to host the Pacific Coast Region's Layout Design and Operations weekend in January. The event was headquartered in Sacramento at the California State Railroad Museum. Members from throughout the region attended both in-person and virtually via Zoom. Several speakers shared their knowledge on various subjects on railroad operations and layout during the Saturday session. Several local layout owners as well as the Sacramento Model Railroad Historical Society opened their doors for tours and operating sessions. Next year's will take place in Sonoma County on the weekend of January 31st and February 1st.

Several division members volunteered to staff the NMRA member information table during the Great Train Show/World's Greatest Hobby event at Cal Expo in February. This show provides a good venue to interact with the public and explain some of the benefits of NMRA membership. The show was very well attended, and we signed up 10 brand new members to the NMRA!

This year's PCR annual convention, hosted by the Daylight Division, took place in late March in San Luis Obispo. The convention featured dozens of clinics, several layout tours as well as some prototypical tours. Our own Division Clerk Dave Fryman was announced as our division's Member of the Year during the convention dinner. Dave is a member who never shies away from volunteering to pitch in when asked.

The Redwood Division will be hosting next year's convention "Extra 2026" in Rohnert Park on April 30th – May 3rd. Plans for the convention are already underway and they will soon be looking for clinicians to give presentations.

Our division's first in-person took place in April at the Sacramento Model Railroad Historical Society. Several division members participated in an operating session the club's layout in the morning prior to lunch and the meeting. This operating session is one that many of our members always look forward to taking part in. The club holds several open houses during the year to show off their layout and educate the public. During our membership meeting a motion was made and approved to provide a \$500 grant to the club for purchases to improve their layout.

While the summer months tend to be a time when many modelers take a break to enjoy the outdoors and warm days, there are a few events to look forward to. The NMRA's national convention "Station No. VI" and will take place July 14th-19th in Novi, Michigan a suburb of Detroit. The National Train Show will be held during the convention on July 19th & 20th. If your travel or vacation plans call for a visit to the Midwest in July, you might consider a visit to Novi.

Our division's next in-person meeting will take place on Saturday August 23rd at the San Joaquin County Fairgrounds in Stockton. The Tidewater Southern Model Railroad Club will be hosting the meeting. Please contact me at mailto:dave@daveandlisa.net if you know of any layout owners in the Stockton area who might be interested in opening their layouts for visitors.

Dave Putnam

From the Editor



Chip Meriam,
Short Line Editor

I guess an apology (of sorts) is due.

This issue of the Sierra Division *Short Line* is “hitting the streets” about 30 days after its normal publication date. But not without good reason (here comes the apology).

The Pacific Coast Region annual convention took place during the same time period usually allotted for editing and assembly. And, of course, our editorial staff was attending that convention rather than toiling away in the press room. To further complicate things, our same editorial staff was awaiting convention-related content for their other publication, the PCR *Branch Line*. The afore mentioned “time period usually allotted for editing and assembly” runs precisely parallel to that of the *Short Line*. So that’s the apology, or “collection of excuses” if you prefer, for the delayed arrival of this newsletter.

Our cover for this issue is devoted to a hard-working and devoted Sierra Division member. **David Fryman** is our Member of the Year for 2025. Behind the scenes, David has been storing and transporting Sierra Division Equipment to gatherings, meets, and conventions; taking detailed notes at all of our business meetings, dedicating entire weekends at our International Rail Fair booth, and furnishing nourishment and refreshment for our quarterly meets. What more could you ask from a Member of the Year? Congratulations, David. This is a well-deserved honor.

Please take note of page 6. This year the NMRA is Ninety Years Old. Divisions and regions throughout the NMRA are planning celebratory events. We, in the Sierra Division, would like to follow suit. If you have any suggestions related to how we might plan and create such an event, please contact Division Superintendent, Dave Putnam - Division Director, Lou Anderson - or me, *Short Line* editor.

Also note, page 9. There you will find a particularly clever rendition of a Square-Foot-Challenge diorama reduced to 1/12th the prescribed footprint. *Did you notice this is the April edition?*

You can find a few photos from our annual visit to the Sacramento Model Railroad Historical Society club layout beginning on page 25.

And a clever, useful device on page 27.

As noted above, there was a PCR Convention in San Luis Obispo during the final days of March. At right is a small snippet of what was available for convention guests. For complete coverage of the goings-on in San Luis Obispo, have a look at the PCR *Branch Line*.

<https://www.pcrnmra.net/branchline2/>



Freemo Modular Layout in the San Luis Obispo Ballroom

A handwritten signature in cursive script, which appears to read "Chip Meriam".

SIERRA DIVISION

Next In-Person Meet: August 23
Tidewater Southern
9:00 AM
1658 S. Airport Way, Stockton
(San Joaquin County Fair Grounds)

Lunch will be provided
Meeting, Contest, and Show 'n Tell

August Contest Categories:

Modeling: Diesel Locomotives

Photo: Any Railroad Model - Color Only

Railroad Arts & Crafts

TIMETABLE

Aug 23, 2025
Stockton

Oct 11, 2025
To be determined

Feb 2026
To be determined



SHORT LINE

June 10 for the July Issue

Sept 10 for the Oct Issue

Dec 10 for the Jan Issue

Mar 10 for the June Issue

Sierra Division continues to have online meets via ZOOM. Future online meets will be held the second Saturday of each month when an in-person meet is not scheduled.

UPCOMING ONLINE MEETS

(all beginning at 10:30 AM)

May 10, 2025

June 14, 2025

July 12, 2025



EXTRA
2026
NORTH

PCR Convention

April 29 – May 3, 2026

Doubletree Sonoma Wine Country, Rohnert Park



SAVE THE DATE!
NMRA National
Convention



JULY 14 – 19, 2025

www.nmra2025.com



33rd Annual Model Train Show

O Scale West

PO Box 60574
Palo Alto, CA 94306-0574

650-218-5762

oscalewest.com

May 23-25, 2025 at the Hyatt Regency Hotel in Santa Clara, California

2025

May 23-25, 2025

Friday - Saturday - Sunday

NATIONAL MODEL RAILROAD ASSOCIATION
2025 National Convention

STATION No. VI

Hosted by:
the NORTH CENTRAL REGION

July 14-19, 2025

Open to ALL model railroaders! You do not have to be an NMRA member to attend! **REGISTRATION IS OPEN!!**

Our location – Sheraton Detroit-Nov, MI
A suburban location with FREE parking!

CONVENTION GOALS and HIGHLIGHTS -

- ** Lowest possible entry costs for individual, spouse and children
- ** Everyone pays the same prices!!
- ** Shorter convention starting 1pm Monday and continuing through Saturday afternoon with a banquet Saturday evening.
- ** Registration includes all layout visits, operating sessions, clinics and admittance to the National Train Show. (*Modeling with the Masters and some proto-tours are extra costs*)
- ** Support for all the traditional activities of the SIG's.
- ** National Contest will be fully supported and run by the National Contest team.
- ** Model Display room for those simply wishing to display models. This also includes the option of entering the People's Choice Contest.
- ** We will have several prototype tours
- ** We expect to have at least 90 clinics and each will be given twice.
- ** We expect to have at least 60 layouts open for tours.
- ** We expect to have up to 20 layouts with OP sessions. All layout tours and op sessions will be self-guided so you can take your time.
- ** We will have a YARD SALE room. Bring stuff to sell! (*NOT an acution!*)
- ** Pizza Party on Friday night!
- ** Two Day National Train Show, Saturday & Sunday

<https://nmra2025.com/>





For 90 years, the National Model Railroad Association (NMRA) has been the “mothership” of the model railroading community. Founded on the principles of supporting both the hobby and industry of model railroading, we've grown into a global fellowship of model railroaders united by our passion for "the world's best hobby." As we celebrate our rich history, we look forward to the next 90 years of innovation, education, and community. Supporting the NMRA, supports the hobby!

NMRA Promise

To foster the art and craft of model railroading through education, standards, and fellowship, ensuring the hobby continues to thrive for generations to come.

NMRA Core Values

- Fellowship: Creating connections through shared passion
- Education: Sharing knowledge and expertise
- Innovation: Advancing the hobby through standards and best practices
- Heritage: Preserving and celebrating railroad history
- Community: Supporting and inspiring model railroaders worldwide
- Strength: Building lasting connections and enduring standards



EXTRA 2026 NORTH

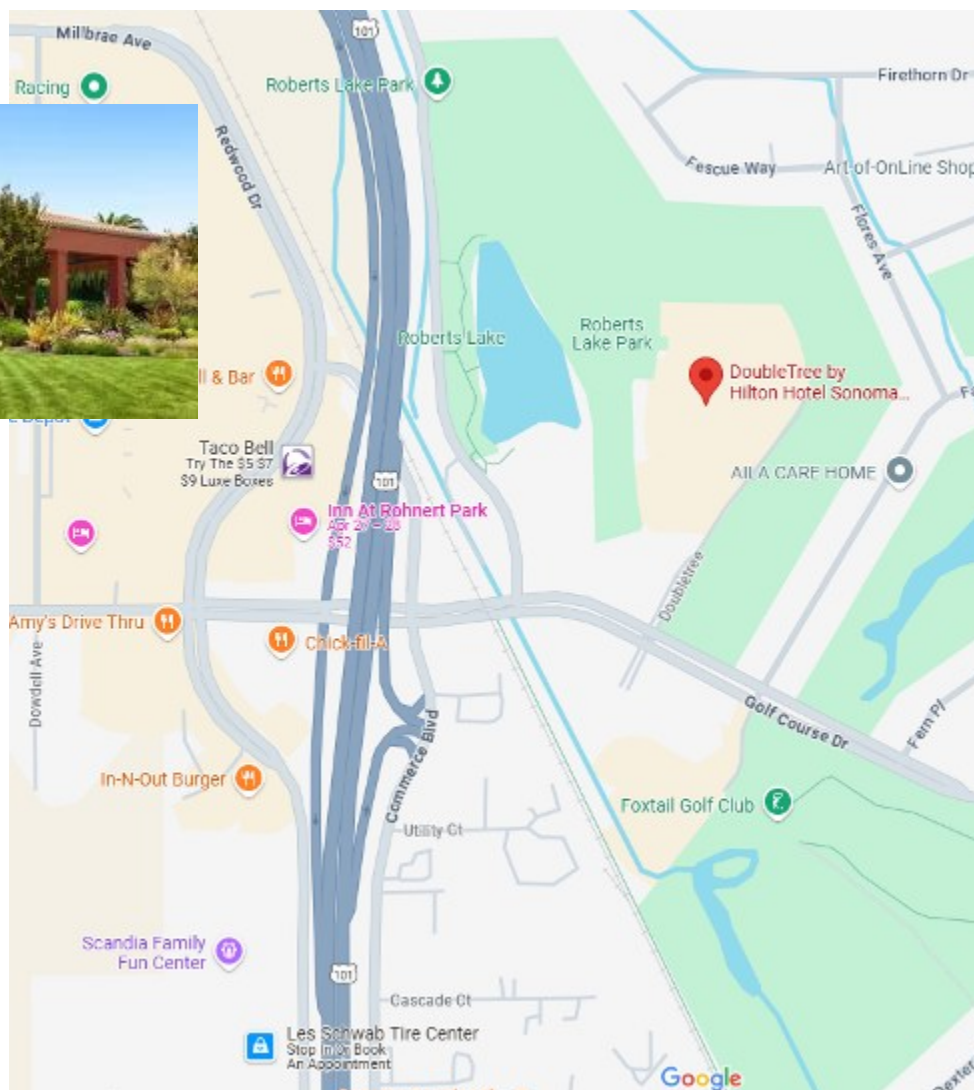
PCR Convention

April 29 – May 3, 2026

Doubletree Sonoma Wine Country, Rohnert Park

Stay tuned for more information!

- Full three-day program Thursday, Friday, Saturday
- Over 40 clinics
- Layout Tours
- Operating Sessions
- Contests
- Excursions
- Member Swap Meet
- **FREE Companion Fare with Full Fare registration**





33rd Annual Model Train Show

O Scale West

PO Box 60574

Palo Alto, CA 94306-0574

650-218-5762

oscalewest.com

May 23-25, 2025 at the Hyatt Regency Hotel in Santa Clara, California

2025

May 23-25, 2025

Friday - Saturday - Sunday

O Scale West is on track for May 23 - 25! O Scale West includes S scale and all gauges, including narrow gauge. Make your plans to come! There will be the usual swap meet, clinics, contest, O Scale West's own company store, and visits to the following local home and club layouts:

- Dave Adams D&RGW (On3)
- Bob Brown (On30, On3)
- California Central (HO)
- Matt Covington D&RGW (Sn3)
- Golden State Model Railroad Museum (O, On3, N, HO, HOn3)
- Don Harper D&RGW (Sn3)
- Jack Burgess' phenomenal HO model of the Yosemite Valley - last chance to see it
- Jakl Family Layout (O) in Mariposa, CA - call to schedule your visit
- Jim Dias' WP (HO)
- Rod Miller SP (O)
- Silicon Valley Lines (HO)

South Bay Railroad Historical Society (HO, N)

Use the O Scale West web site O Scale West to register on line for the meet and for hotel rooms.

Optionally you can contact the meet hotel, the Hyatt Regency Hotel, 5101 Great America Parkway, Santa Clara, CA 95054-1118. The phone number for national registration is 1-800-421-1442 or call the hotel direct at 1-408-200-1234 and ask for the O Scale West group rate of \$169 plus tax per night. After May 4 the group rate may not be available! You can also use the Hyatt On-Line Reservations.

So plenty to do, make your plans to attend and register for O Scale West now!

Questions? Email info@oscalewest.com

Decisions, Decisions

Winner of the Levity Award
2025 PCR Convention
April—San Luis Obispo
Entry by Lou Anderson

This diorama was spawned from a discussion over lunch at The Alibi, a popular bar and grill in Chico. Lou Anderson joined Chip and Lorri Meriam for lunch one recent Saturday. The sandwiches and burgers were presented with long wooden skewers - the perfect diameter and height for HO scale utility poles.

The next step, in Lou's mind, was to create a 'Square Inch' display for entry into the "Square Foot Challenge" at the next PCR convention.

Be sure to see the contest entry form and the next page.



Continued on page 10

PCR Model Contest Entry Form

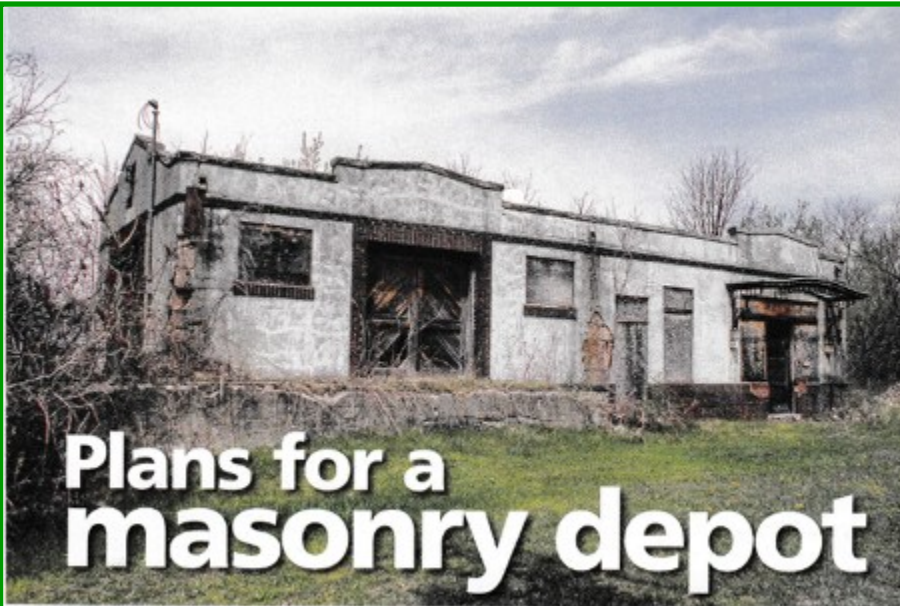
DESCRIPTION: Decisions, Decisions (aka: I Thought Earl said "One Square Inch Contest")		CATEGORY Special Contest <input checked="" type="checkbox"/> OPEN <input type="checkbox"/> KIT <input type="checkbox"/> NOVICE	ENTRY # <div style="font-size: 1.5em;">30</div>
INSTRUCTIONS: Check all items that apply and briefly describe all work accomplished under each factor. Repeat information if required to obtain full credit in each section. Attach and refer to additional pages as needed. List all supplementary materials displayed with the model such as photos, plans, jigs, etc. for judging. A PCR Model Contest official will assign and fill in the Entry Number.			Score Judges Only
1. CONSTRUCTION: Proper handling of materials, applied labor, skill, and craftsmanship.		Max 40 pts	<div style="font-size: 1.5em;">20</div>
PLANS <input checked="" type="checkbox"/> Designed <input type="checkbox"/> Prototype <input type="checkbox"/> Commercial <input type="checkbox"/> Construction Article	MATERIALS <input type="checkbox"/> Brass <input checked="" type="checkbox"/> Wood <input checked="" type="checkbox"/> Styrene <input type="checkbox"/> Other	BONDING <input type="checkbox"/> Solder <input checked="" type="checkbox"/> Cement <input type="checkbox"/> Epoxy	
METHODS <input checked="" type="checkbox"/> Cut & fit basic shapes <input type="checkbox"/> Kit or kitbash <input type="checkbox"/> Photoetched <input type="checkbox"/> Cast from patterns		DETAILS <input checked="" type="checkbox"/> Scratchbuilt <input checked="" type="checkbox"/> Commercial <input type="checkbox"/> Cast from patterns <input checked="" type="checkbox"/> Other (explain)	
Plans: See attached Construction: Using Rust-Oleum® 2081 Light Gray Primer, primed, then sloppily covered styrene with Costco Kirkland® brand tissue paper soaked in diluted Elmer's® Glue-All® PVA glue diluted with imported Svalbard® pure iceberg water at an exact 62:38 ratio. Wood (and my hands stained with Vetro stain.) Drilled hole for pole then base (and my workbench) was covered with scenic materials. Dog and Hydrant commercial items from Woodland Scenics. (Wooden pole provided courtesy of Chip Meriam and The Alibi Pub & Grill, Chico, CA.)			
2. DETAIL: Refinement, the amount of subordinate detail added, and the complexity of the model		Max 20 pts	<div style="font-size: 1.5em;">20</div>
Are you kidding- Earl only allowed one square inch. There isn't much room for detail.			
3. CONFORMITY: Effort taken to achieve prototype practice and appearance		Max 25 pts	<div style="font-size: 1.5em;">20</div>
Pole is made from actual real wood (see below). Dog looks like one I saw walking around downtown Woodland who was doing his business near Main & College Sts. (in front of Father Paddy's) a few weeks ago but the fire hydrant was yellow. (On model dog is not actually peeing on pole.)			
4. FINISH AND LETTERING: General appearance and proper application of finish and lettering		Max 25 pts	<div style="font-size: 1.5em;">20</div>
<input type="checkbox"/> Airbrush or spray <input checked="" type="checkbox"/> Hand painted <input type="checkbox"/> Hand striped <input type="checkbox"/> Decal striped <input type="checkbox"/> Decal lettering <input type="checkbox"/> Dry transfers <input checked="" type="checkbox"/> Other (explain)			
Hand painted fine details with a Purdy® Chinex® Elite™ 2 3/4" paintbrush using DecoArt® acrylics that had mostly dried out because I forgot to screw down the caps tight. Ground cover is stuff I've had lying around since the 1980s and need to get rid of- Might be Woodland Scenics or from Busch.			
5. SCRATCH BUILDING: All parts fabricated from basic materials.		Max 15 pts	<div style="font-size: 1.5em;">20</div>
Cross bar on pole is from a dead Douglas Fir tree chopped down in August 2019 near Ravendale, Modoc County. Tree was allowed air dry for 4 years, 3 months, 13 days in a Wood-Mizer® model KD250PRO Dehumidification Wood Kiln housed inside an environmentally controlled horse barn in Esparto, Yolo County. Using an antique Bulgarian carpenter's saw the trunk was sawn in to manageable pieces (2" x 1" x 3") that were then hand trimmed/whittled and sanded to the final HO 6" x 6" scale lumber using a Leatherman® Squirt® Multi-Tool knife blade and file tools.			
SCORE TABULATED BY: _____ VERIFIED BY: _____ MAXIMUM		TOTAL <div style="font-size: 1.5em;">125 POINTS</div>	

PCR-NMRA MODEL CONTEST ENTRY FORM, REVISED FOR COMPUTER ACCESS ON 15 APRIL, 2000

Masonry Depot From Plans In July 2024

Model Railroader

By Chip Meriam



Plans for a masonry depot

The Lehigh Valley depot in Gorham, N.Y., is the subject of Harold Russell's latest prototype drawings. The concrete block and stucco building was located on the railroad's Naples Branch in the central part of the Empire State.

This Lehigh Valley structure is located Gorham, N.Y.

By Harold W. Russell • Photos and illustrations by the author

The Naples Branch of the Lehigh Valley ran southwest from Geneva to Naples, N.Y., in the central part of the state. Along the way the railroad passed through many small communities, each with a wood depot. The exception was Gorham, which was home to an elaborate concrete block and stucco structure. The depot's flowing lines and glass patterns surrounding the canopies make it an interesting modeling subject.

Prototype history

In the middle of the 19th century, the area between of Geneva and Naples was noted for its nurseries, foundries, and glass and brick foundries. Later, Naples gained fame for its wineries. The shores of the nearby Finger Lakes have an ideal climate for grape growing. At the time, the market for these businesses was

primarily local, since the area lacked good transportation.

The residents of the Naples Valley saw Geneva, their rail-served neighbor to the north, as a gateway for their products. In 1871, the 29-mile Geneva & Southwestern Ry. was chartered. The proposed line would connect Naples, Middlesex, Valley View, Rushville, Gorham, and Stanley to Geneva, joining the Lehigh Valley west of its depot.

The villages along the line were bonded for the railroad's construction. By 1872 the route was surveyed, grading commenced, and some bridges were built. But the financial panic of 1873 brought all work to a halt. The bonded villages lost their money.

In 1892, the Middlesex Valley RR was incorporated, with its construction using the graded right-of-way of the Geneva & Southwestern. The railroad was finished

in 1894. The Lehigh Valley acquired it a year later when it purchased all the railroad's capital stock. The line then became known as the Naples Branch of the Lehigh Valley.

Fancy in a no-frills era

When the Middlesex Valley RR built its depots, each community was offered a standard, no-frills single-floor wood building. Photographs show that Stanley, Rushville, and Middlesex chose this option. Naples, the largest community on the branch line, built a two-story wood depot. Both the Naples and Rushville depots were distinguished by gingerbread at their roof peaks.

Gorham was the exception. Its leadership, viewing the town as an up-and-coming community, chose to build a formidable concrete block and stucco



Something about this lonely eastern depot caught my attention, my curiosity, and my "imagineering." After a lengthy solitaire session of mental ping-pong, I gave in and decided to construct this building in HO scale as a contest entry project for the 2025 Pacific Coast Regional Convention. Somehow, I managed to score 96 points in the judging, enough to earn a merit award.

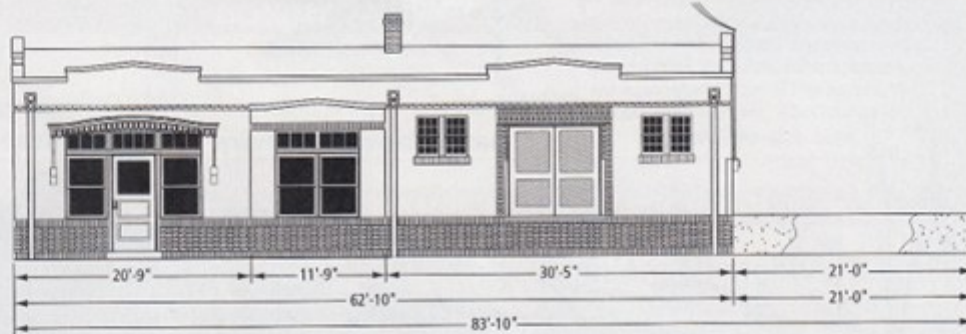
Follow along as I summarize the process with a photo essay.



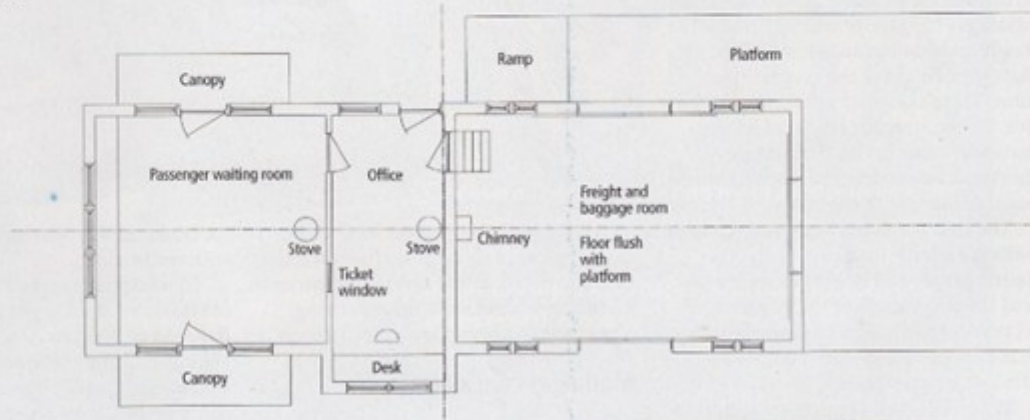
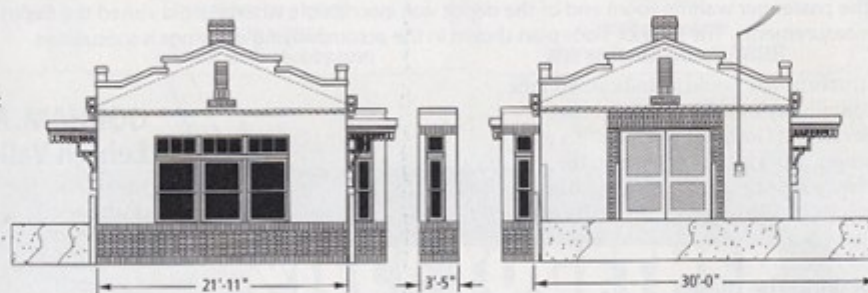
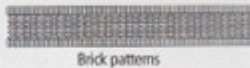
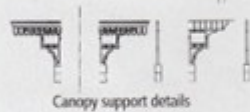
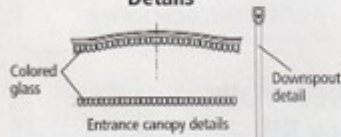
Continued on page 12

MORE ON THE WEB

Subscribers to our website can download and print drawings of the Lehigh Valley depot on Trains.com



Details



1/2 HO scale

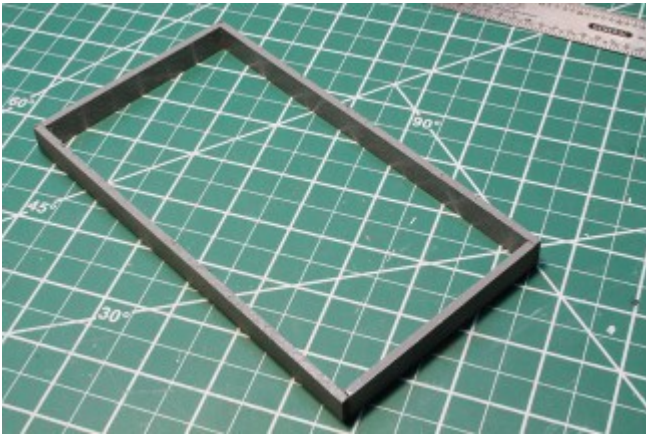
TO CONVERT 1/2 HO SCALE
DRAWINGS TO YOUR SCALE
COPY AT THESE PERCENTAGES:
N 108.8 percent S 272.2 percent O 360.28 percent

Drawn for Model Railroader magazine by
HAROLD W. RUSSELL

Magazine purchaser may have photocopies of these drawings made as an aid to personal model making but does not have the right to distribute copies of the drawings to others. Contact Model Railroader regarding commercial use of these drawings.

July 2024 39

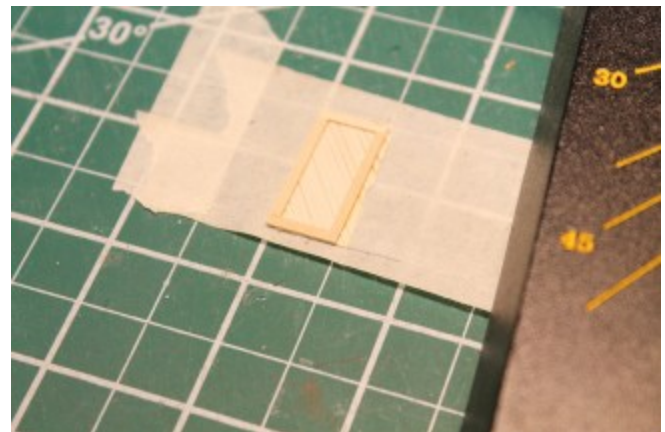
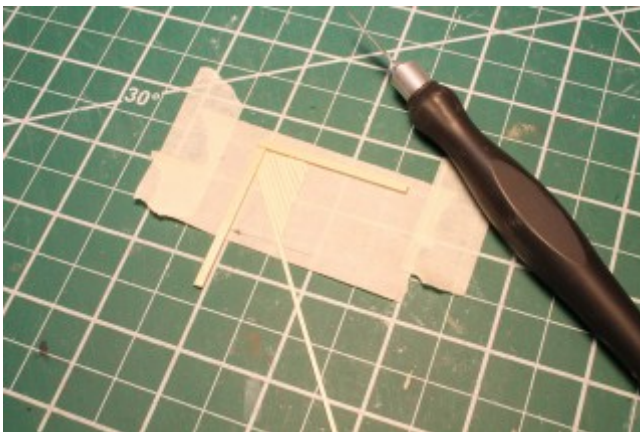
Continued on page 13



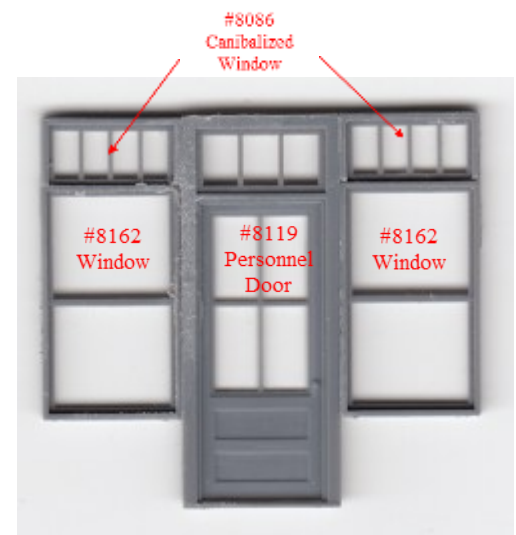
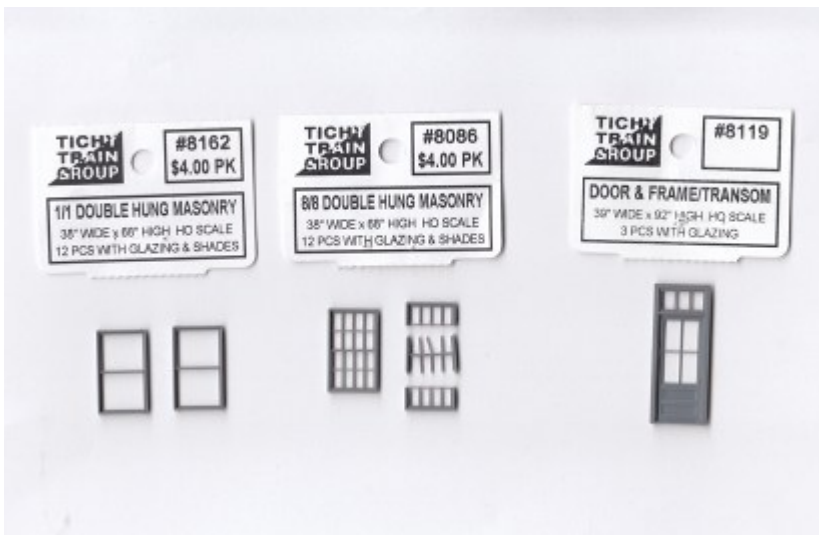
Foundation form finished with gloss paint to keep plaster from adhering to form while setting.



Finished slab foundation cast in Plaster of Paris. Ramp is formed by filing with a large mill bastard file and finished with emery boards.

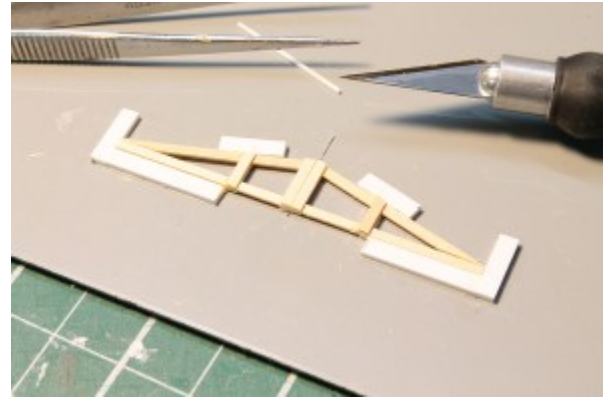
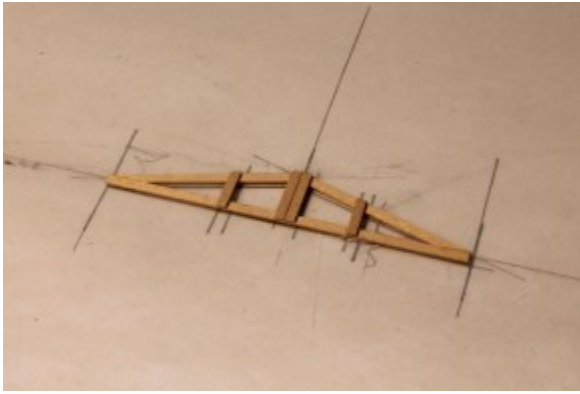


The prototype freight doors were "crude" enough that I could easily scratch-build them. These are formed from HO scale 1 X 4 strip wood imported from Mt. Albert (Fast Tracks) Scale Lumber in Canada,

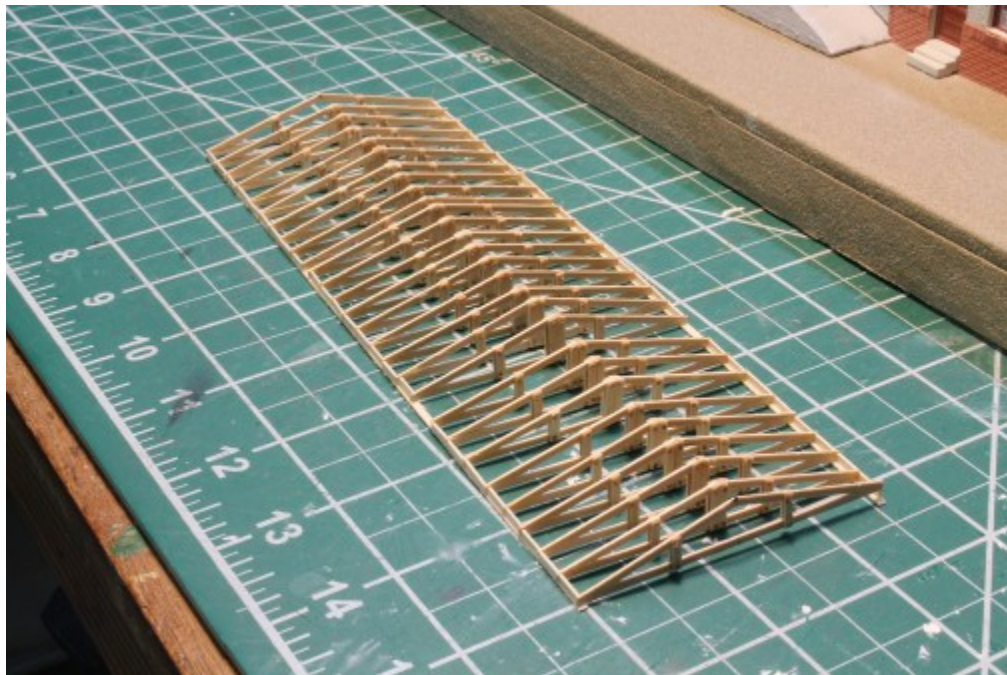


With the exception of the scratch-built freight doors, all doors and windows are from Tichy Train Group. The two waiting room entry clusters required a little surgery and assembly.

Continued on page 14



The roof trusses began with one “model” laid out on a scale drawing. The model was used to construct a styrene jig with which all the other trusses were built.

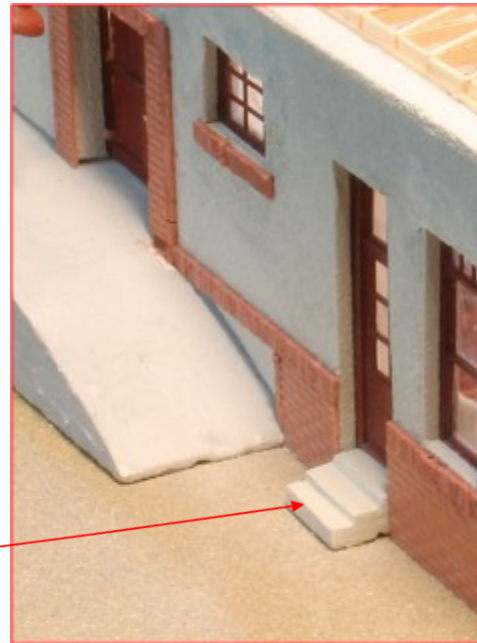


The finished trusses, all twenty-eight of them, were fitted with NBW castings and then rolled atop scale 2 X 4 top sills. Uniform sized freeze blocks served as spacers.

Continued on page 15

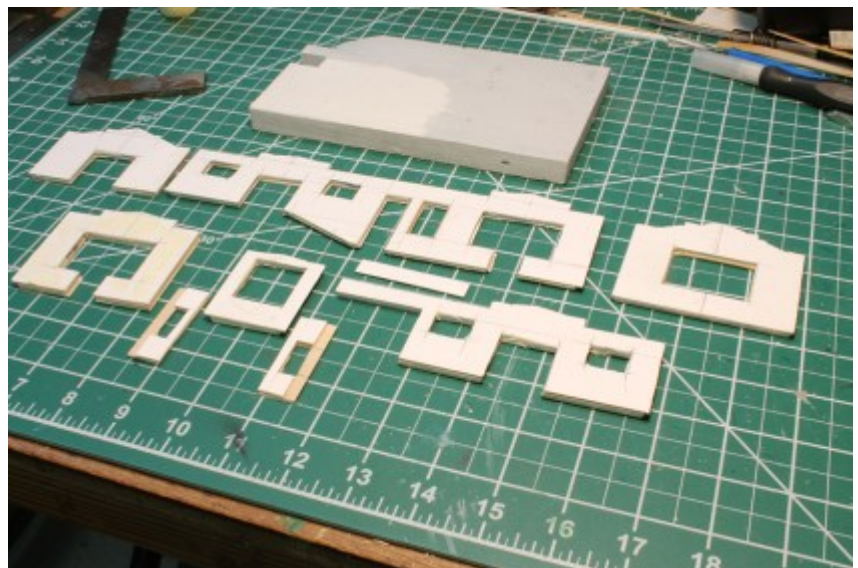


Stoops were built up from individual wood pieces; then puttied, sanded, and painted.

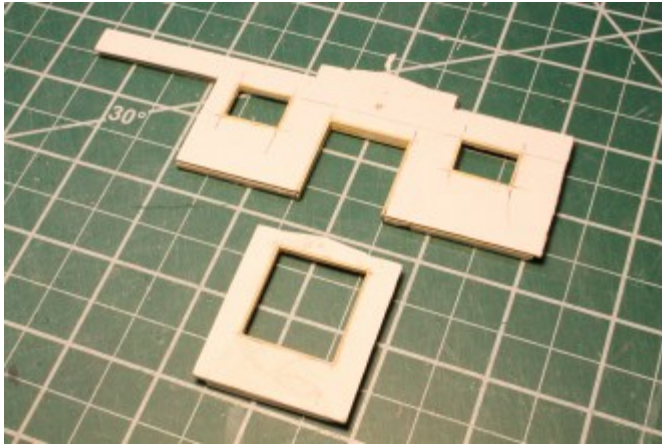


Exterior walls are cut to shape using balsa wood and mat board, the stuff used to mat and frame art work.

The balsa and mat board walls are laminated to form "sandwiches."



Continued on page 16



The sandwiches are trimmed out with scale strip [wood to form sills and jambs.



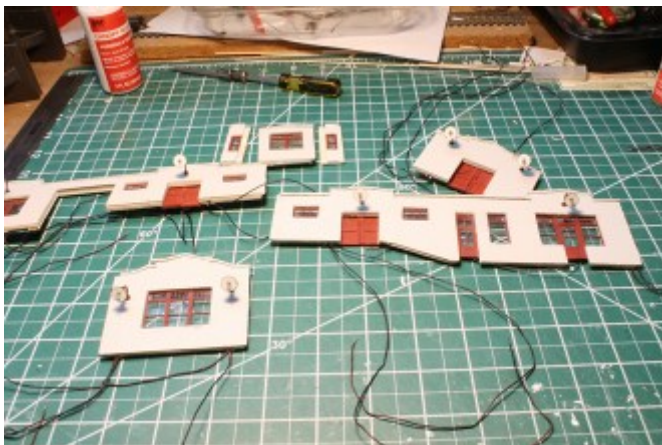
A stucco "brown" coat is simulated with with contour putty.



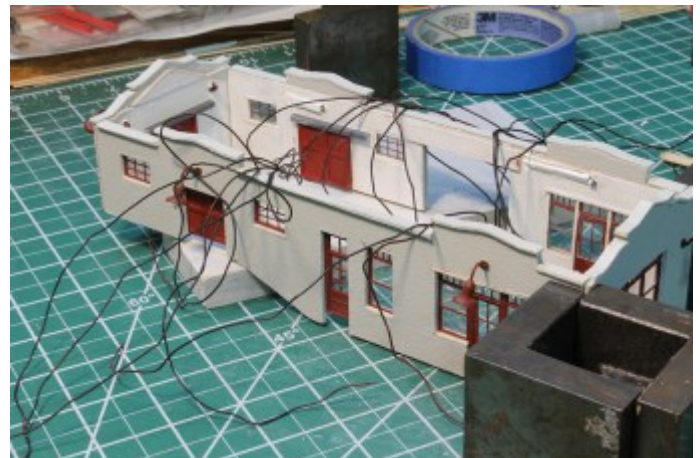
Rustoleum textured spray paint is applied to create the stucco texture coat. The final (color) coat is a light, flat gray primer.



Interior view of laminated walls with window and door installed. Note channels for wiring of exterior lights.



Finished exterior walls with lighting installed.



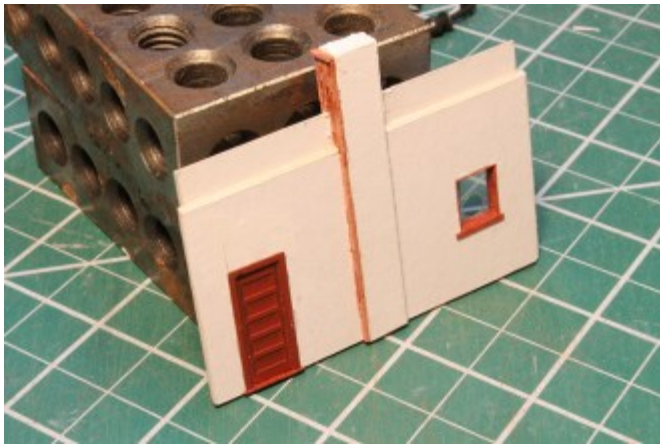
Initial erected exterior walls.

Continued on page 17



Exterior fenestration includes brick wainscotting. Brick veneer base (sheet stock) is trimmed to proper height and individual HO scale bricks are applied - one brick at a time.

Continued on page 18



The office interior detail begins with a door, a custom designed ticket window, and a chimney with a wood stove.



The checker board floor pattern was designed using MS Excel and printed on plain copy paper.

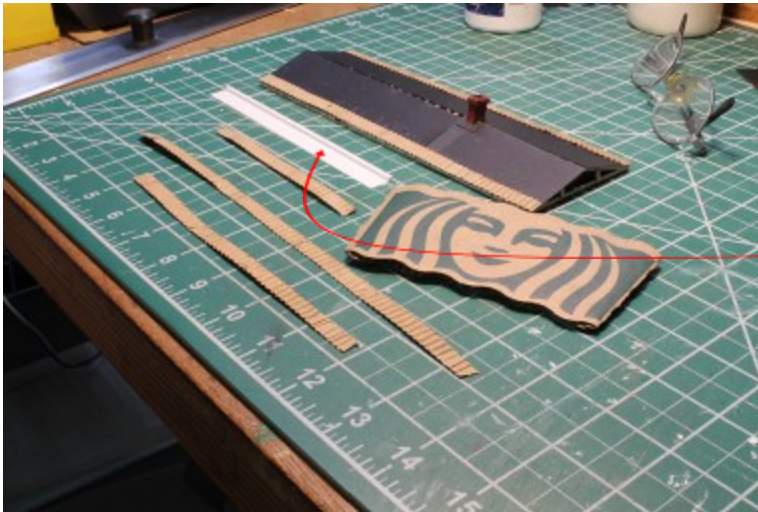


The populated office,

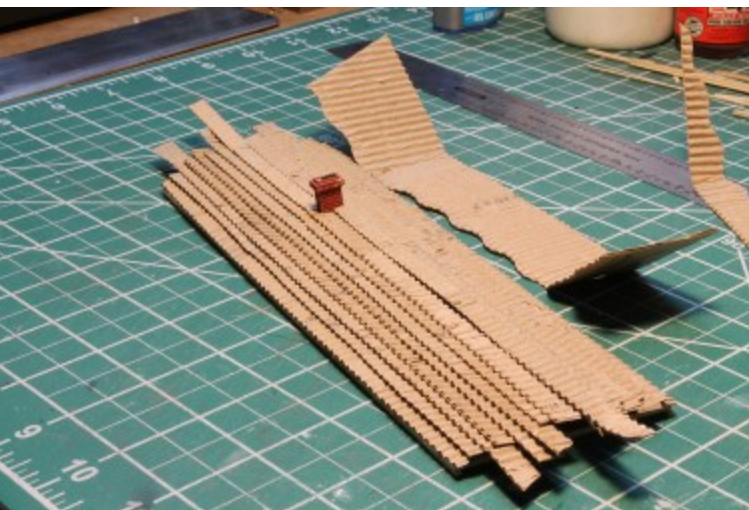
Continued on page 19



Black construction paper simulates roof paper installed over trusses.

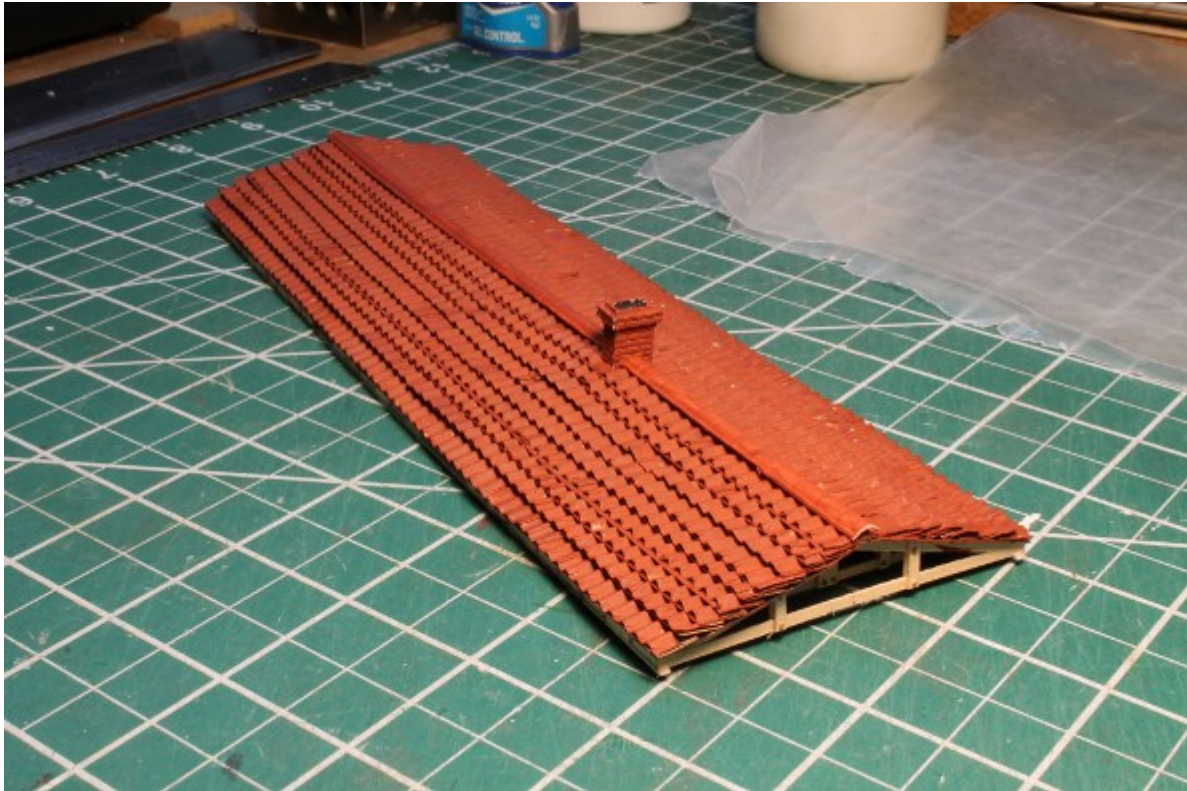


Corrugated “roof strips” cut from Starbucks’ insulating cup sleeve.
Note simple jig used to insure parallel and



Corrugated strips applied to roof.
Excess will be trimmed to fit at each end.

Continued on page 20

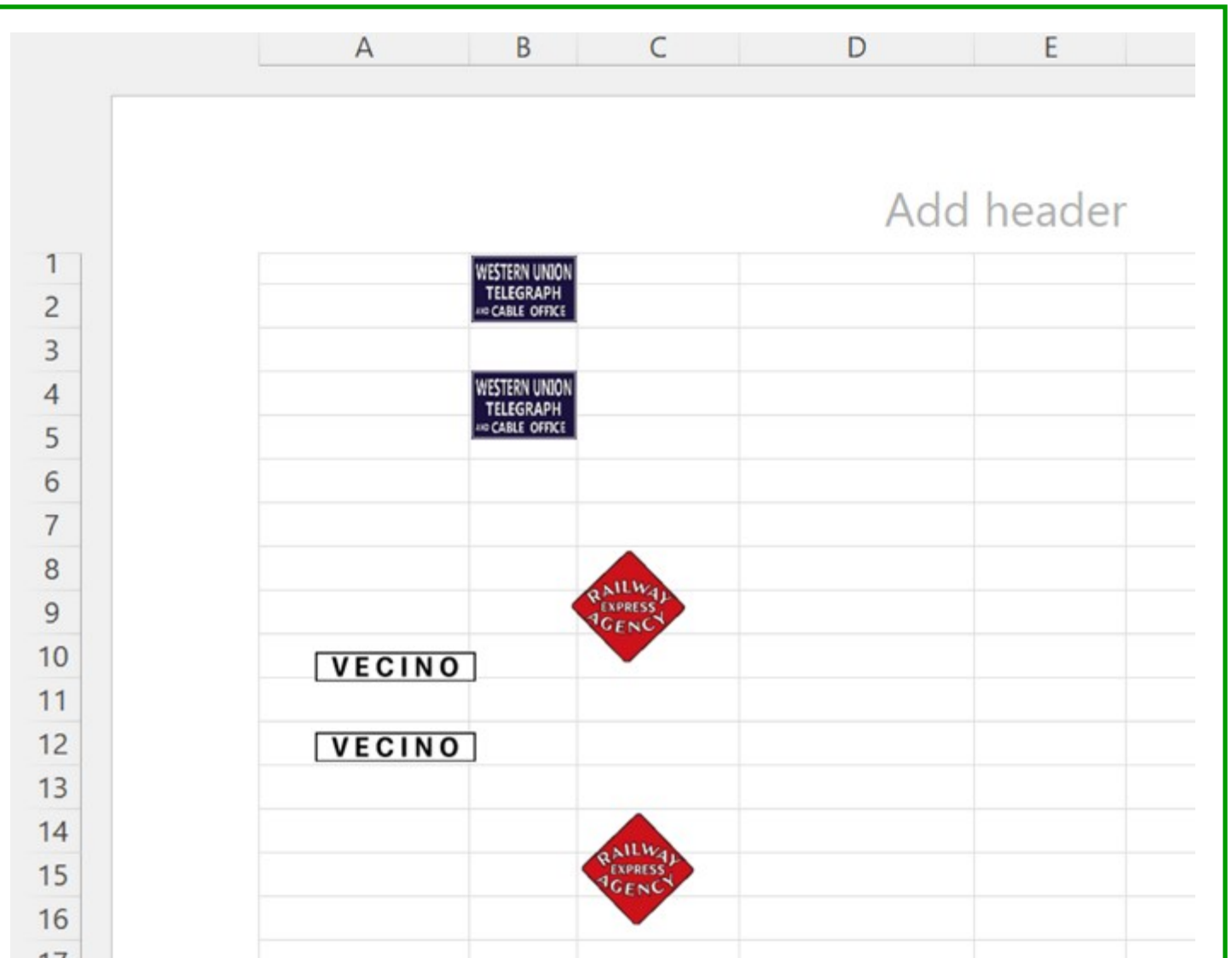


Roof. Finished, trimmed, and painted to simulated terra cotta tile.



Completed roof installed on building.

Continued on page 21

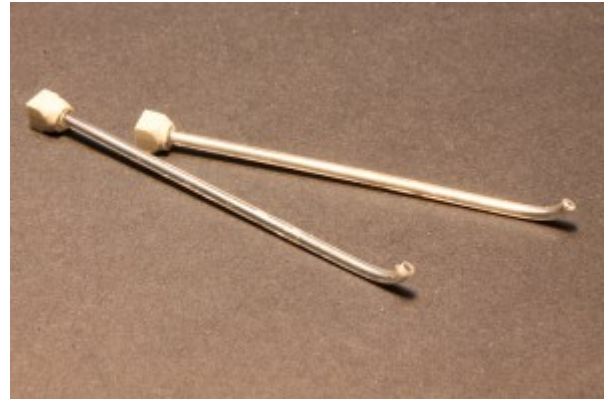
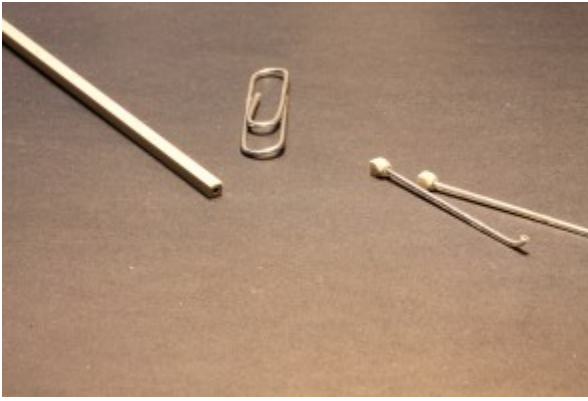


Station signs are created in Excel and sized to scale.

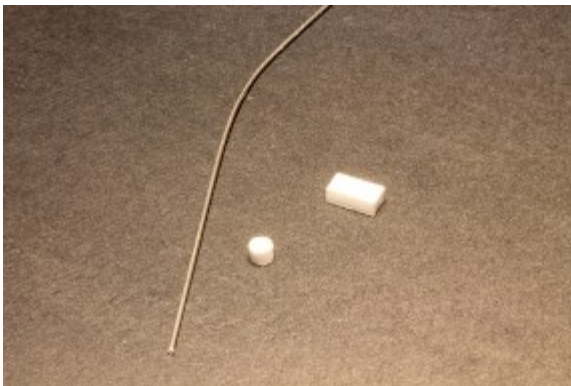
The station ID boards are created in Excel directly.

The Western Union and REA signs are images downloaded from the internet and copied into the Excel spreadsheet.

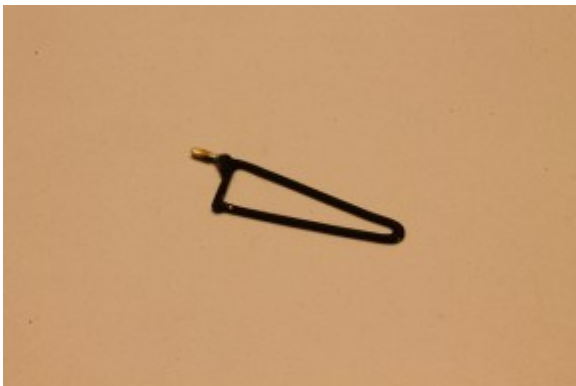
Continued on page 22



Scuppers formed from Plastruct square tube turned in a lathe. Downspouts formed from No. 10 paper clips.



Meter box is assembled from Plastruct styrene rod and styrene rectangular dowel.
Conduit is formed from .0374 music wire.
Service head is a drop of hot solder applied to the end of the music wire and filed to shape.



A sign bracket is fashioned from brass wire and painted black. The "hanging" sign is affixed with a universal adhesive.

Continued on page 23



The finished product.
A bit of Upstate New York right here in
Northern California.

Tidewater Southern MRC, Inc.
 A nonprofit public benefit corp. EST. 5/6/19

Saturdays*
 9:00 am - 5:00 pm

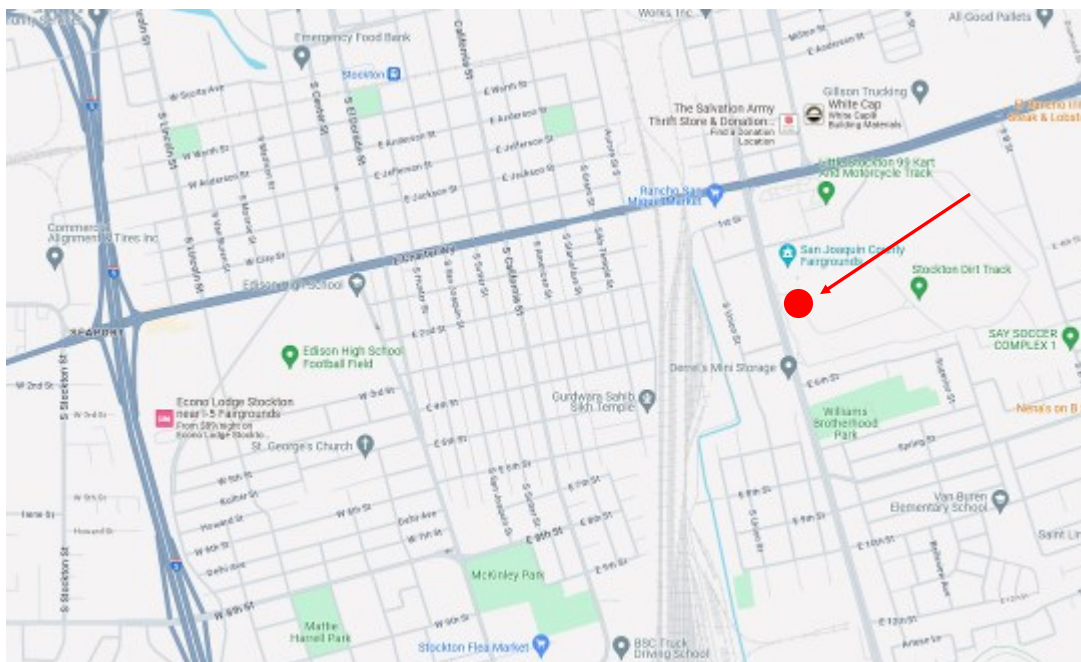
Building and
 Operating both HO
 and N scale layouts
 NMRA Member

WWW.TWSMRC.COM
 tidewatersrhs@gmail.com
 The Tidewater Southern Model Railroad Club

San Joaquin County Fairgrounds
 1658 Airport Way Stockton, CA 95206 Building 1
 *Unless preempted by other events

Tidewater Southern MRC Inc.

We are Located in Building 1 at the San Joaquin County Fairgrounds ([1658 S Airport Way, Stockton, CA 95206](https://www.google.com/maps/place/1658+Airport+Way,+Stockton,+CA+95206/@37.751111,-121.471111,15z)), We have both HO and N scale layouts housed in a 2,400 sq. ft. alcove. The HO scale layout represents the former Tidewater Southern branch line of Western Pacific. We meet every Saturday from 9am - 5pm except for major holidays and run trains on the last Saturday of the month. Admission is free! Email us at: tidewatersrhs@gmail.com for our schedule.



April 12 Meet Sacramento

The Sierra Division winter meet was held in the spring. Scheduling conflicts precluded our typical early February gathering. But, we managed to arrange an op session and a meeting for April 12 at the Sacramento Model Railroad Historical Society

clubhouse in Sacramento. This is our usual location for the first meet of the year, and has taken place annually except for during the COVID mitigation period.

Tremendous thanks to SMHRS for hosting us and allowing us to operate their Sierra Central Railroad.



Sacramento Roundhouse



Local "Crawler" Entering Sacramento's
12th Street Yard



Dave Putnam Making A Stop At Oroville



Michael Eldridge (l) works the Oroville Switch Job
As Brandon Salas (r) Eases A Road Freight Out Of
Sacramento

Continued on page 26

April 12 Meet, continued



Chip Meriam (l) and David Fryman (r)
Supervising The Railroad Activity



Lunch For All, Courtesy Of
The Sierra Division

The next in-person meet is being planned for August at the Tidewater Southern Model Railroad Club at the San Joaquin Fair Grounds in Stockton,



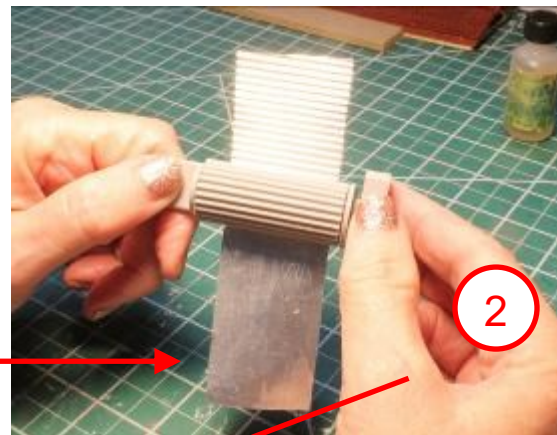
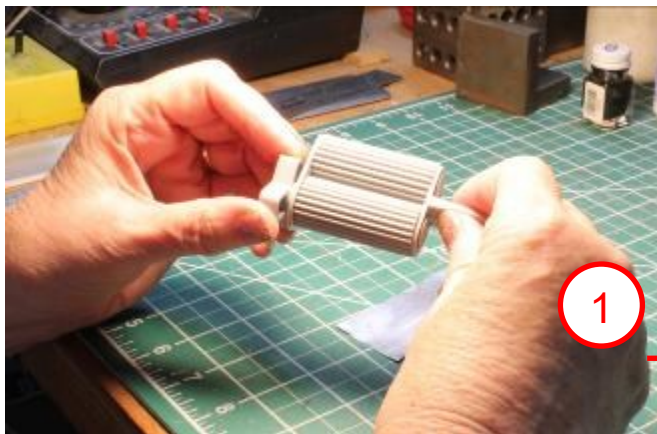
Continued on page 24

April 12 Meet, continued

Michael Eldridge shared his latest gadget discovery: A foil corrugator.

This little device works like an old-fashioned wringer washer. Blank, heavy-duty foil is rolled through the corrugated rollers to form a strip of corrugated metal for roofing, fencing, siding, etc.

Getting the foil started is a little tricky because you need both hands to hold the wringer and a third hand to feed the foil into the wringer. We had success by laying the wringer flat on the work surface and feeding the foil through with one hand while turning the knob with the other hand.



Check it out at

<https://www.thingiverse.com/>

Have you joined the NMRA Interchange? It's the newest tool to help you connect with other members, gain knowledge and learn to modeling techniques. The Interchange is hosted on the Discord application which is available for Windows, Apple OS, Android and Apple devices. See instructions below for signing up.

Joining the NMRA Interchange

Speed Muller

IT Manager, NMRA

Have you joined the Interchange yet? If not, follow these steps to get connected!

1. Go to nmra.org/nmra-interchange
2. It will ask you to log in to the NMRA website if you're not already logged in. If you are not registered with the NMRA website yet, now's the time to do it. Click the "Need a username? Register now" button, and get set up. Use the email address on file in the NMRA membership system (probably the one where you got this eBulletin). The system will email you a link to set your password.
3. Now you should be in the [NMRA Interchange](#) page. If not, click this link.
4. Click on [Member Info](#) in the top right corner and scroll down get your exact Member ID. You'll need that later.
5. Read through the page and then follow the "Interchange Server Invite" link at the bottom. This is a special link just for you and will look something like <https://discord.gg/xxxxxxx>
6. You will be taken to Discord (the platform that hosts the NMRA Interchange) where you will be prompted to sign in, if you already have an account there, or prompted to register, if not. If you need instructions for creating an account or logging into Discord they can be found [here](#).
7. Once you accept the NMRA Interchange Invite, and you are logged in, you will land in **#the-lobby** with a message on what to do next.
8. We suggest that you read and agree to the **#rules** first. Just click on **#rules** and then click on "thumbs up". Then click on **#the-lobby** again to do the most important step.
9. Discord and the NMRA need to check with each other, in order to verify that you are a current NMRA member with an email on file. You start the process with the **/onboard** command. Now, this is very sensitive to the type of device you are using, so just type the first few letters **/onb** at the bottom where you see a + sign in a circle. It will complete the command for you in a pop-up just above that. Click on the **/onboard** command. Add your membership number (6 characters followed by a space and then two more characters) just as you noted in step 4. Example: **/onboard input: 123456 0A**
10. Discord and the NMRA computers will have a chat, and then you will receive an email containing a **/clearance** command. That's your entry ticket. Copy and paste the whole line into **#the-lobby** (at the + sign again). Example: **/clearance input: 654321**
11. You're in! You will not have to do any of this again. If anything derails, you'll get a message telling you what to do next, and we also have Moderators in the Interchange standing by to help.
12. If all went well, you'll now see more than 350 channels (those # things). We suggest you start by going to **#introduce-yourself** and then scroll up to **#the-workbench** to see what others have done and shared! Then find your Region and Division and say "hello" there. And then start participating and enjoy!



PACKRATT TRAINS & TOYS

546 Kentucky Street
Gridley CA 95948
530-797-9264
packratt1@gmail.com

Buy - Sell - Trade

Matt Padgett

Wed thru Fri 12:00 PM to 5:00 PM

Saturday 11:00 AM to 5:00 PM

Sierra Division events appear on the PCR Calendar. If you would like for Sierra Division and PCR events to appear in your personal calendar, you can link to the PCR calendar on the web.

This will work if you use Google Calendar, Outlook, or Apple's Calendar app. Go to <https://www.pcrnmra.net/link-to-the-pcr-calendar/> for instructions on how to link to the PCR Calendar. Events placed on the PCR calendar will automatically appear in your calendar also. Questions or need help? meldridge2000@gmail.com



The Sierra Division, PCR-NMRA is making available to Sierra Division members a “kit” containing the necessary tools and instructions to complete the part 3 requirements of the NMRA Model Railroad Engineer – Civil Certificate. More information on the requirement is at: www.nmra.org/civil

The Kit:

The kit includes tools and templates sufficient to create the following (you only need to construct 3):

- HO Scale #5, Code 83 Right-hand turnout
- HO Scale #5, Code 83 Left-hand turnout
- HO Scale #5, Code 83 Single crossover
- HO Scale #5, Code 83 Double crossover
- HO Scale #5, Code 83 Crossing 14 degree

How the System Works:

- ☐ Reservations are on a first-come, first-served basis. All reservations will be for a calendar month. Requests must be sent to louiesqd@att.net.
- ☐ The kit will be shipped via UPS on the first day of the month. Arrival should be within 2-3 days.
- ☐ The member may use the kit for what should be, **about** three weeks.
- ☐ The member must ship the kit back, postage pre-paid by the 25th of the month. This will allow us time to check and clean the kit and still send it out again on the first of the month. Zip ties and address information will be included in the kit. Return the kit to:
Lou Anderson, 100 Buddy Drive, Woodland, CA 95776.

Reservations:

The rental fee and deposit must be received by the 15th of the preceding month.

The rental fee for the kit is \$25.00 by separate check. This will cover the cost of shipping the kit to the member, cleaning costs and additional packaging as needed.

A deposit in the amount of \$500.00 must be included by separate check. This check will **NOT** be deposited unless the kit is not returned. When the kit is returned, the check will be destroyed.

Mail both checks, made payable to the **Sierra Division**, to:

Lou Anderson, 100 Buddy Drive, Woodland, CA 95776.

Preparation/Supplies:

Be prepared. Have all supplies ready and on-hand in advance of the arrival of the kit. You will need:

Micro-Engineering Code 83 NON-weathered rail, have extra on hand.

Small diameter solder.

Soldering iron, min 35 watts.

Instructions and a DVD are including in the kit or you can go to <https://www.handlaidtrack.com/> for more information.

Responsibilities:

- ☐ The member is responsible for loss and all damage to the contents of the kit. If you break it, or damage it beyond further use, notify us immediately at louiesqd@att.net. Be prepared to include a check in the amounts listed above to cover the cost of replacement.
- ☐ Please notify us as soon as possible if you wish to cancel your reservation so that we can offer it to another member.

If you have questions, please direct them to Lou Anderson at louiesqd@att.net. or Chip Meriam at chipmeriam@comcast.net.

Have you changed your address or other membership information?

Notify Headquarters

Email: nmrahq@nmra.org

Phone: 423-892-2846 (8am—4pm

ET)

IMPORTANT !!!!

Around And About



On The Streets of Lisbon, Portugal

March 30, 2025

(photo: Savanna Meriam-Gartner)



NATIONAL MODEL RAILROAD ASSOCIATION, INC.

**Wow! Did you know there's a new
NMRA Member Benefit?**

It's the NMRA Partner Program!

**Model railroad manufacturers are partnering
with the NMRA to offer discounts to NMRA
members.**

**Current members log in to www.nmra.org .
At the Members Menu, go to the NMRA
Partnership Page to see who's on the list,
discounts offered, and how to order. New
Partners are coming on board every month,
so check back often.**

**If you're not yet a member, here's another
great reason to join and get more fun from
your hobby with a membership in the
world's largest model railroad organization.**

www.nmra.org

See Partial List Of Partners On The Next Page



Partnership Program

The companies listed below give discounts to NMRA members when orders are placed using a special discount code. Check them out! New partners are listed in **bold red**. You can find descriptions of these companies and their products, links to their websites, and the discount codes on our Partnership Page at nmra.org/partnerships. Remember you need to be logged into our site as a member to see the codes! Go to nmra.org/user/register to register your name on the website.

18ten Designs

Bespoke Rail
CatzPaw Innovations
CB Train Junction
Clever Models
Custom Model Railroads CMR
Coastmans Scenic Products
Composite Designs
Conowingo Models
Cowcatcher Magazine
Daylight Sales
Deepwoods Software
Deluxe Materials
Diorama Hobbies
Dwarvin Enterprises
East Coast Circuits
Enterprise&National Car Rentals
Evan Designs
Feight Studios
Fusion Scale Graphics
Gatorfoam
Great Decals!
Green Frog Productions
Highways and Byways Model
Railroad Graphics

Hot Wire Foam Factory
Ipswich Hobbies
ITLA Scale Models
K.I.S.S. Method
LaBelle Woodworking
LARC Products
Logic Rail Technologies
MAC Rail
Micro-Mark
Mine Mount Models
Miniprints
Model Train Catalogue
Modelers Decals & Paint
Motrak Models
MRC (Model Rectifier Corp)
MrTrain.com
Mudd Creek Models
New Creations Victorian
Railroad Buildings
Nick and Nora Designs
Northlandz
NScaleWorks
Old Depot Gallery
Old West Scenery

R & J Details
R. Duck Woodkits
R. Duck Locomotive Works
Ram Track
RR-CirKits
Scale Model Plans
Scale Railroad Models
Scenery Solutions
Showcase Miniatures
T-TRAK by Denniston
Team Track Models
The Model Railroad Benchwork
Store
The N Scale Architect
Tichy Train Group
Touch of the Brush Weathering
Train Installations
Train Show, Inc.
Trainmasters TV/MRH Store
Trainz
TSG Multimedia
UGEARS
USA Airbrush Supplies/Badger
White Rose Hobbies
WiFi Model Railroad (LocoFi)
Yelton Models

**A proud
Partner with**





National Model Railroad Association, Inc.

Membership Renewal Notice

Name:				
Address:				
City:		State:		Zip:
Phone:		Birth Date:		Scale:
Email:		Occupation:		

Membership	1 Year	2 Year	3 Year	Total
Member with Printed Magazine Subscription – All Rights & benefits, digital NMRA Magazine access and the Printed Magazine. (26 cents a day!)	\$92.00	\$184.00	\$276.00	
Member - All rights & benefits as well as the digital NMRA magazine access only. (19 cents a day!)	\$68.00	\$136.00	\$204.00	
Family – Spouse or minor child of above member. No magazine, no voting rights, not allowed to hold office. Name: _____ Email : _____	\$10.00	\$20.00	\$30.00	
Sustaining – Mandatory for group memberships (Clubs, Business, Associations). All rights & benefits, and the Printed NMRA magazine.	\$120.00	\$240.00	\$360.00	
Student – Between the ages of 19-25 years of age. All Rights & benefits, digital NMRA magazine access only.	\$40.00	\$80.00	\$120.00	
Membership				\$
General Donation				\$
Merchandise				\$
Region Subscription				\$
Total				\$

If you would like to set up auto renewal, pay with PayPal or make payment arrangements please call the office to speak with a staff member: 423-892-2846. Thank you for becoming a member of the NMRA!

Please make checks payable to NMRA

We accept MC, Visa, Discover & American Express.

Credit Card

--	--	--	--	--	--	--	--	--	--	--	--	--	--	--	--

Expire Date:

--	--	--	--

CVV Code:

--	--	--	--

Signature: _____

NMRA Merchandise					
Item	Size (Select Size: Circle)	Qty	Price (S/H Included)	Total	
Blue Denim Shirt Long Sleeve	S M L XL		\$45.00		
Blue Denim Shirt Long Sleeve	2XL 3XL 4XL		\$50.00		
Black Golf Shirt	S M L XL		\$45.00		
Black Golf Shirt	2XL 3XL 4XL		\$50.00		
Grey Golf Shirt	S M L XL		\$45.00		
Grey Golf Shirt	2XL 3XL 4XL		\$50.00		
Grey Ball Cap			\$20.00		
Black Ball Cap			\$20.00		
Turnout Template HO Scale			\$6.00		
Turnout Template O Scale			\$6.00		
HO Scale Clearance & Gauge			\$10.00		
HO Scale Gauge			\$7.00		
Sn3 Scale Gauge			\$7.00		
O Scale Gauge			\$15.00		
On3 Scale Gauge			\$7.00		
On30 Clearance & Gauge			\$10.00		
HOn3 Scale Gauge			\$7.00		
N Scale Clearance & Gauge			\$10.00		
Railway Track & Maintenance Book			\$30.00		
Concrete Book			\$30.00		
Steel Book			\$40.00		
Freight Terminals & Trains Book			\$30.00		
Merchandise Total				\$	
Printed Region Subscriptions					
All region newsletters are available online!					
You are automatically a part of the region, there is <u>no charge</u> for region membership!					
The following regions charge for printed region subscriptions.					
21 Northeastern Region	\$12.00		28 Midwest Region	\$6.00	
23 North Central Region	\$15.00		33 Southeastern Region	\$20.00	

Please update your contact information below.

Address:		
City:	State:	Zip:
Phone:	Email:	

P. O. Box 1328

Soddy Daisy, TN 37384-1328

Email: HQ@NMRA.ORG

+1 423-892-2846